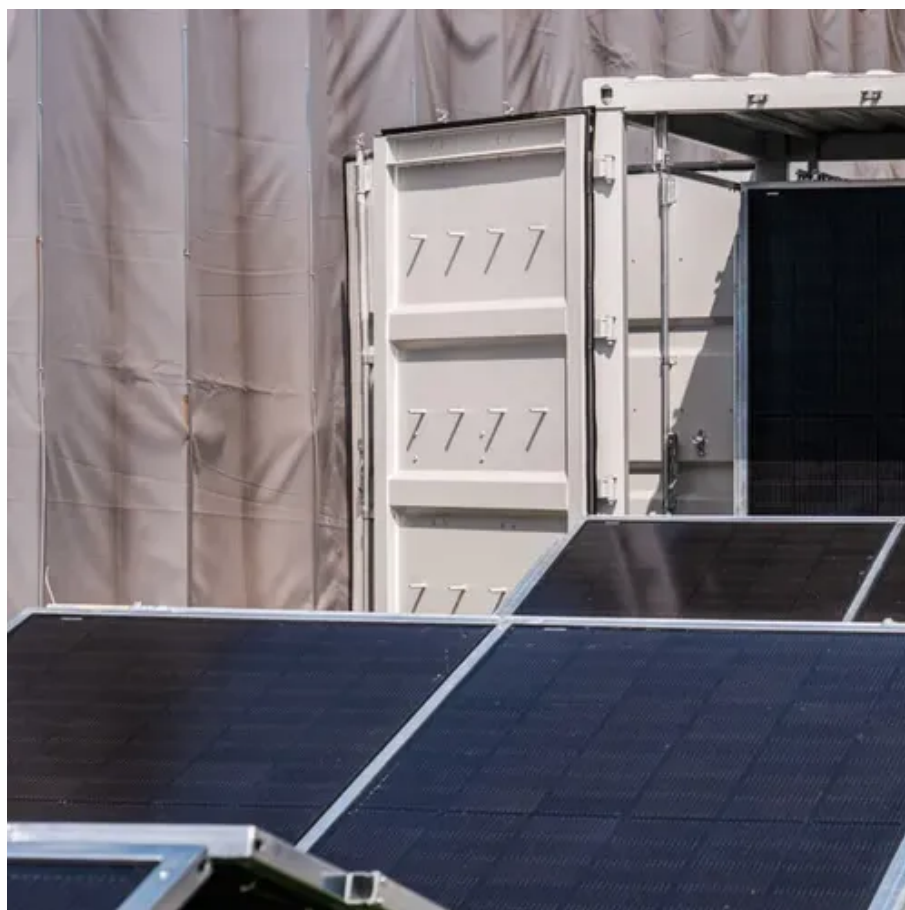




Huawei 5g base station communication distance





Overview

What is a Huawei base station?

Let's dive into a technical explanation. A base station, also known as an eNodeB (for 4G LTE) or gNodeB (for 5G NR) in Huawei's terminology, is a piece of equipment that facilitates wireless communication between user equipment (UE) like smartphones, tablets, and IoT devices, and the core network of the telecommunications provider.

What is a standalone 5G network?

Standalone (SA): standalone networking. SA uses an end-to-end 5G network architecture, where 5G standards are used on terminals, base stations, and core networks. SA supports a variety of 5G new services, including eMBB, URLLC, and mMTC, and is applicable to the middle and later stages of 5G network construction.

What is a 5G network architecture?

SA uses an end-to-end 5G network architecture, where 5G standards are used on terminals, base stations, and core networks. SA supports a variety of 5G new services, including eMBB, URLLC, and mMTC, and is applicable to the middle and later stages of 5G network construction. Routers support NSA and SA.

What is a Huawei bbu5900 base station?

With its advanced features and energy-efficient design, the Huawei BBU5900 base station is a scalable and future-proof solution, ideal for deployment across various environments, including urban, suburban, and rural areas.



Huawei 5g base station communication distance

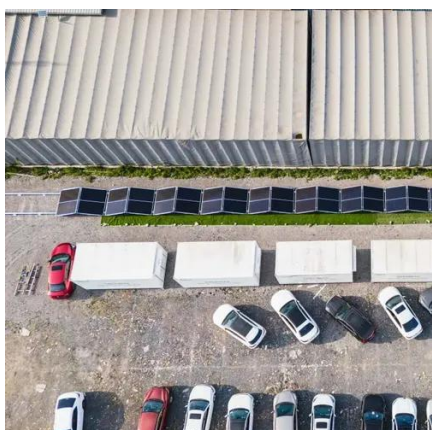


Huawei Base Station: Types, Mechanical Properties, and How to ...

Thanks to advanced antenna systems and spectrum efficiency, Huawei base stations deliver strong signals over long distances while minimizing power consumption. This ...

[Top 5G Base Station gNodeB Manufacturers](#)

Explore the leading manufacturers of 5G gNodeB base stations, including Nokia, Ericsson, Huawei, Samsung, and ZTE, and their contributions to ...



huawei base station

Huawei provides comprehensive management and control systems, such as Huawei's U2000 or Huawei's Cloud BTS. These systems enable operators to monitor, ...

[Base Station Huawei BBU5900 Series 5G LTE UBBPF1 ...](#)

Designed with robust processing capabilities and flexible networking options, the BBU5900 series provides seamless integration with Huawei



Remote Radio Units (RRUs), enabling enhanced ...



Communication distance of Huawei base station

China Mobile and Huawei have together built the highest elevation 5G (or any other) base station on this planet- at 6500 meters (21,300 feet) at Mount Everest where there are no roads or trails.

5G Network Architectures and Technologies

Two types of eNBs are available: One is the conventional LTE eNB, supporting connections to an LTE core network, and the other is the enhanced LTE (eLTE) eNB, supporting connections to ...



Top 5G Base Station gNodeB Manufacturers & Vendors

Explore the leading manufacturers of 5G gNodeB base stations, including Nokia, Ericsson, Huawei, Samsung, and ZTE, and their contributions to the telecom industry.





Base Station Huawei BBU5900 Series 5G LTE ...

Designed with robust processing capabilities and flexible networking options, the BBU5900 series provides seamless integration with Huawei Remote ...



Huawei base station communication distance

The transmission distance of a single-mode optical cable at one level (that is, from the BBU to an RRU or from one RRU to another RRU) is 40 km. The RRU supports a maximum of three ...

Huawei's world's first 5G-A smart base station technology ...

Huawei 5G-A smart base stations redefine the intelligent standards of communication infrastructure through the "AI chip + digital twin + multi-agent" technology stack.



DBS5900 Distributed Base Stations -- Huawei Enterprise

The DBS5900 can meet the needs of industry users for wireless broadband access and multimedia critical communication, and obtain better coverage and user experience. The ...



Enterprise Wireless

It obtains physical information such as the relative distance, speed, angle, and movement direction of traffic vehicles and people through the millimeter wave radar beam, and classifies ...



[DBS5900 Distributed Base Stations -- Huawei ...](#)

The DBS5900 can meet the needs of industry users for wireless broadband access and multimedia critical communication, and obtain better ...

Enterprise Wireless

It obtains physical information such as the relative distance, speed, angle, and movement direction of traffic vehicles and people through the ...





Contact Us

For inquiries, pricing, or partnerships:

<https://www.sccd-sk.eu>

Phone: +32 2 808 71 94

Email: info@sccd-sk.eu

Scan QR code for WhatsApp.

