



Huawei base station frame power supply





Huawei base station frame power supply



HUAWEI 5G Base Station Embedded Power Supply ETP48200-C5E1 AC to DC

A: We are a professional supplier of Huawei, ...

48V DC Power Supply Unit for Huawei DBS5900 5G Base Station ...

48V DC Power Supply Unit UPEUe 02311TVH for Huawei DBS5900 5G LTE Base Station BBU5900 UMPTe5 UMPTe3. Reliable power solution for telecom infrastructure., Alibaba

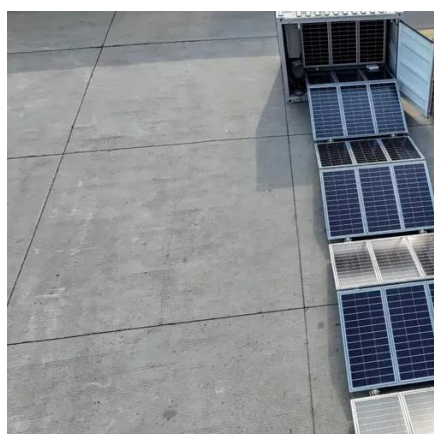


Huawei Rectifier Power Supplies

A Huawei rectifier power supply is a critical component in modern telecommunications infrastructure, providing stable, efficient, and reliable DC power to base stations and network ...

[48V DC Power Supply Unit for Huawei DBS5900 5G Base Station](#)

48V DC Power Supply Unit UPEUe 02311TVH for Huawei DBS5900 5G LTE Base Station BBU5900 UMPTe5 UMPTe3. ...



[Huawei Embedded Power Supply Catalogue](#)

Huawei embedded power products can meet various requirements by their modular combination, which make customers' power development easier and faster, and significantly cut the cost of ...

[Review: Huawei R4850G2 Power Supply 53.5VDC, 3kW with CAN](#)

We can design and produce special power supply for ...



[Huawei Embedded ETP48100-B1 Communication Base Station ...](#)

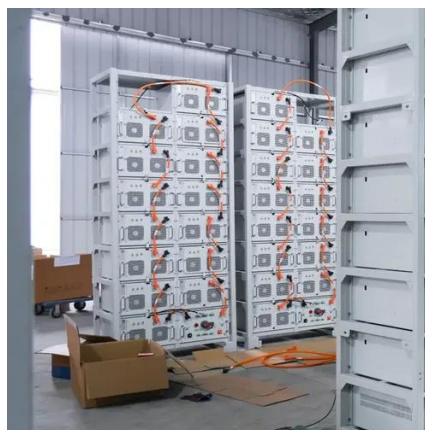
It is equipped with two R4850G rectifiers with a current of 50 A (100 A total). The output voltage is 48 V. The PSU has an AC input (220 V), it is not equipped with a battery port. The device has ...





[HUAWEI 5G Base Station Embedded Power Supply ETP48200 ...](#)

A: We are a professional supplier of Huawei, Emerson and ZTE power supply modules, embedded power systems and rectifier modules with original packaging and technical service ...



[Huawei Communication Base Station Power ...](#)

The R4850N1 is a digital rectifier that converts the 85~300VAC to 53.5 VDC and possesses the characters of high efficiency, high power density, walk ...

Huawei Rectifier Power Supplies

A Huawei rectifier power supply is a critical component in modern telecommunications infrastructure, providing stable, efficient, and reliable DC power to base ...



[Huawei Embedded ETP48100-B1 Communication ...](#)

It is equipped with two R4850G rectifiers with a current of 50 A (100 A total). The output voltage is 48 V. The PSU has an AC input (220 V), it is not ...



[Huawei Communication Base Station Power Supply Unit R4850n1](#)

The R4850N1 is a digital rectifier that converts the 85~300VAC to 53.5 VDC and possesses the characters of high efficiency, high power density, walk-in start, hot-plug, complete protection, ...

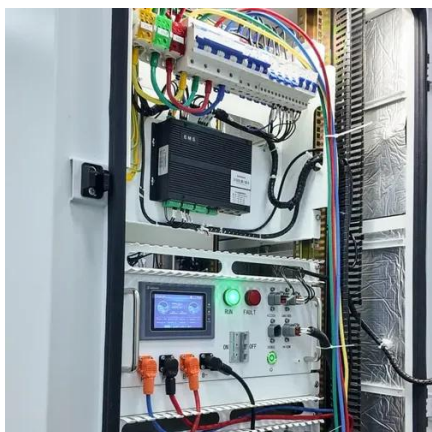


[Uninterrupted remote site power supply](#)

Considering that remote base stations must be highly-integrated, inexpensive, and modest, Huawei has developed its all-on-pole EasySite solution, which integrates the base station, ...

[Review: Huawei R4850G2 Power Supply 53.5VDC, 3kW with CAN](#)

The Huawei R4850G2 is a very capable 48V Telecommunications grade power supply available brand-new at cheap surplus prices (normally under \$100 USD). Rated at ...



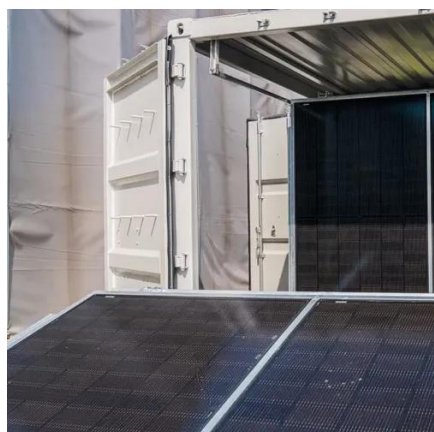
[Uninterrupted remote site power supply](#)

Considering that remote base stations must be highly-integrated, inexpensive, and modest, Huawei has developed its all-on-pole EasySite ...



[Site Power Solutions & Facility , Huawei Digital Power](#)

The blade power supplies and lithium batteries are widely used in macro/micro sites. The system uses free cooling thanks to an original ...



Communication Base Station Telecom Power Supply Unit Huawei ...

We can design and produce special power supply for cabinet or other customized services according to your requirement.

[Site Power Solutions & Facility , Huawei Digital Power](#)

The blade power supplies and lithium batteries are widely used in macro/micro sites. The system uses free cooling thanks to an original butterfly design and bionic root heat dissipation.





Contact Us

For inquiries, pricing, or partnerships:

<https://www.sccd-sk.eu>

Phone: +32 2 808 71 94

Email: info@sccd-sk.eu

Scan QR code for WhatsApp.

