



Importance of base station communication





Overview

A base station connects your phone to the network. It acts as a hub between mobile devices and the core system. Base stations form the backbone of 4G LTE and 5G networks. They provide the coverage you need for calls and data. Base stations enable voice, data, and internet access.

A base station connects your phone to the network. It acts as a hub between mobile devices and the core system. Base stations form the backbone of 4G LTE and 5G networks. They provide the coverage you need for calls and data. Base stations enable voice, data, and internet access.

These base stations are essential for enabling the seamless transmission of data and voice signals over a wide area, allowing us to stay connected with one another no matter where we are. In this article, we will delve into the significance of radio base stations and how they have revolutionized.

In the world of telecommunications, the term “radio base station” plays a crucial role in ensuring seamless communication between mobile devices. These stations are an essential component of modern cellular networks, providing the infrastructure necessary for transmitting and receiving signals from.

A base station plays a pivotal role in the realm of telecommunications, acting as the cornerstone of connectivity. It enables seamless communication by linking various wireless devices to broader networks, ensuring that data flows efficiently from one point to another. A base station is an integral.

A base station connects your phone to the network. It acts as a hub between mobile devices and the core system. Base stations form the backbone of 4G LTE and 5G networks. They provide the coverage you need for calls and data. Base stations enable voice, data, and internet access. They transmit.

The present-day tele-space is incomplete without the base stations as these constitute an important part of the modern-day scheme of wireless communications. They are referred to as cell towers or cellular antennas. These types of objects are an inevitability since they serve the purpose of.

Base stations are critical components in wireless communication networks, serving



as the intermediary between mobile devices and the core network. They play a vital role in ensuring seamless connectivity, efficient data transmission, and reliable communication services. This blog explores the. Why are base stations important?

Base stations are the backbone of wireless communication networks, playing a pivotal role in signal transmission, network reliability, and high-speed data connectivity. As technology evolves, the importance of base stations will continue to grow, addressing new challenges and supporting the ever-expanding demand for wireless communication services.

Why are base stations important in cellular communication?

Base stations are important in the cellular communication as it facilitate seamless communication between mobile devices and the network communication. The demand for efficient data transmission are increased as we are advancing towards new technologies such as 5G and other data intensive applications.

What is a base station in telecommunications?

In telecommunications, a base station is a fixed transceiver that serves as the main communication point for one or more wireless mobile client devices. It not only connects wireless devices to each other but also links them to other networks or devices, often through dedicated high-bandwidth wired or fiber optic connections.

How does a base station work?

It not only connects wireless devices to each other but also links them to other networks or devices, often through dedicated high-bandwidth wired or fiber optic connections. Most base stations function as transceivers, meaning they are capable of both sending and receiving wireless signals.



Importance of base station communication



The Importance Of Radio Base Stations In Modern ...

As the demand for mobile data continues to skyrocket, the role of radio base stations becomes even more significant. With the advent of new technologies like 5G, these towers are ...

Understanding The Importance Of Radio Base Stations In ...

In urban areas, multiple base stations are often deployed to ensure seamless coverage and prevent signal interference. In addition to antennas, radio base stations also contain a variety ...



What Is the Role of a Base Station in Wireless Communication?

Base stations are critical components in wireless communication networks, serving as the intermediary between mobile devices and the core network. They play a vital role in ...

What is a Base Station? -- From Communication ...

The base station is an indispensable piece of infrastructure in the mobile communication network, silently supporting every phone call, ...



The Importance Of Radio Base Stations In Modern Communication ...

A radio base station, commonly referred to as a base transceiver station (BTS), is a vital component of a cellular network that facilitates the transmission and reception of radio signals ...



The Role And Importance Of Radio Base Stations In Modern ...

The importance of radio base stations in modern communication systems cannot be overstated. These stations form the backbone of cellular networks, providing the connectivity, ...



The Importance Of Radio Base Stations In Modern Communication ...

As the demand for mobile data continues to skyrocket, the role of radio base stations becomes even more significant. With the advent of new technologies like 5G, these towers are ...





The Role And Importance Of Radio Base Stations In Modern Communication

The importance of radio base stations in modern communication systems cannot be overstated. These stations form the backbone of cellular networks, providing the connectivity, ...



Base Stations

Base stations form a key part of modern wireless communication networks because they offer some crucial advantages, such as wide coverage, continuous communications and ...

[What is a Base Station? -- From Communication Core to ...](#)

The base station is an indispensable piece of infrastructure in the mobile communication network, silently supporting every phone call, message, and network ...



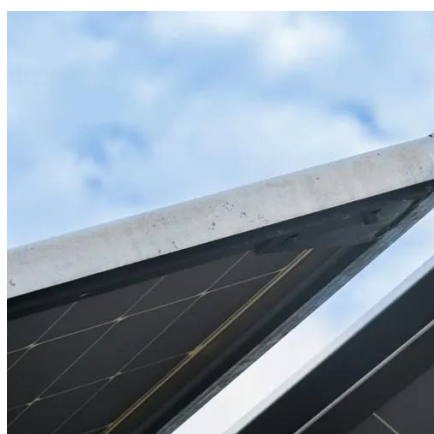
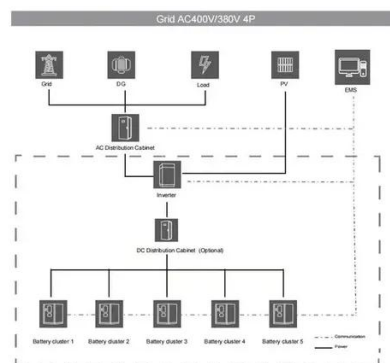
[The Importance Of Radio Base Stations In Modern ...](#)

A radio base station, commonly referred to as a base transceiver station (BTS), is a vital component of a cellular network that facilitates the transmission and reception of radio signals ...



The Importance Of Radio Base Stations In Communication ...

In the world of telecommunications, radio base stations play a crucial role in enabling communication between mobile devices. These stations are a key component of ...



Understanding The Importance Of Radio Base Stations In Communication

In urban areas, multiple base stations are often deployed to ensure seamless coverage and prevent signal interference. In addition to antennas, radio base stations also contain a variety ...

Base Stations

Base stations form a key part of modern wireless communication networks because they offer some crucial advantages, ...



What are Base Station in Telecommunications?

The Backbone of Wireless Networks A base station connects your phone to the network. It acts as a hub between mobile devices and the core system. Base stations form the backbone of 4G ...



What Is A Base Station?

A base station is an integral component of wireless communication networks, serving as a central point that manages the transmission and reception of signals between ...





Contact Us

For inquiries, pricing, or partnerships:

<https://www.sccd-sk.eu>

Phone: +32 2 808 71 94

Email: info@sccd-sk.eu

Scan QR code for WhatsApp.

