



Installation conditions of container substation in Sukhov Nepal





Overview

6 substations are under construction to make electricity supply sufficient, reliable, quality and safe in Kathmandu Valley.

6 substations are under construction to make electricity supply sufficient, reliable, quality and safe in Kathmandu Valley.

Containerized mobile substations are sheltered and address applications in challenging environmental conditions including areas with high pollution, high humidity, extreme temperatures or sand storms. Containers are easy to transport and fast to install, by reducing foundation works as well as.

Customers requiring shorter overall delivery times and minimal on-site work have been the main drivers for Hitachi Energy's development of pre-fabricated indoor substations. Smaller distribution substations are subdivided into container-sized modules, which can be manufactured, assembled and tested.

Under the Project, a new 132/33/11 kV Kawasoti substation will be constructed with a transformer of 132/33 kV, 30 MVA. The new substation will receive power from a higher capacity 132 kV transmission line with greater reliability than the existing 33 kV sub-transmission line. The 132 kV.

The project comprises 21 subprojects in separate geographic locations in western Nepal, each consisting of the following three components. The objective of the project is to increase access to and improve quality and efficiency of electricity supply in selected areas of western Nepal. The primary.

Sigma Con. has continued a tradition in generating a quality, reliability and excellence in all phases of substation projects. We provide turn-key substation construction and maintenance of voltage up to and including 132 kV. Our team can provide quality construction services for a new installation.

Project Synopsis: Design, Supply, Delivery, Installation, Testing and Commissioning of 33/11KV substations and 33KV lines Client's: M/S Nepal Electricity Authority. Durbarmarg, Kathmandu Project Location: Bharatpur, Dhading, Hetauda, Kavre, Lagankhel, Nuwakot, Palung, Ramechhap, Sindhupalchoek. What is a container substation?



An intelligent solution for obtaining direct current quickly and economically is provided by container substations. By integrating the equipment in a modular housing and undertaking rigorous testing off site, Siemens is able to supply fully built and tested modular traction power substations to a consistent and high level of quality.

What is a containerized mobile substation?

Containerized mobile substations are sheltered and address applications in challenging environmental conditions including areas with high pollution, high humidity, extreme temperatures or sand storms. Containers are easy to transport and fast to install, by reducing foundation works as well as installation and commissioning effort on site.

What is a small distribution substation?

Smaller distribution substations are subdivided into container-sized modules, which can be manufactured, assembled and tested at the factory, allowing easy transport and fast installation and commissioning at site.

Why should you choose Siemens traction power substations?

By integrating the equipment in a modular housing and undertaking rigorous testing off site, Siemens is able to supply fully built and tested modular traction power substations to a consistent and high level of quality. The state-of-the art equipment and connectivity allows optimal operations and transparency.



Installation conditions of container substation in Sukhov Nepal



[Sigma Con. \(P\) Ltd. , Electrical Substation Services](#)

We provide turn-key substation construction and maintenance of voltage up to and including 132 kV. Our team can provide quality construction ...

Containerized Substations

Containerized mobile substations are sheltered and address applications in challenging environmental conditions including areas with high pollution, high humidity, extreme ...



[Sigma Con. \(P\) Ltd. , Electrical Substation Services](#)

We provide turn-key substation construction and maintenance of voltage up to and including 132 kV. Our team can provide quality construction services for a new installation or an upgrade; ...

Containerized and prefabricated substations , Hitachi Energy

Smaller distribution substations are subdivided into container-sized modules, which can be manufactured, assembled and tested at the



factory, allowing easy transport and fast ...



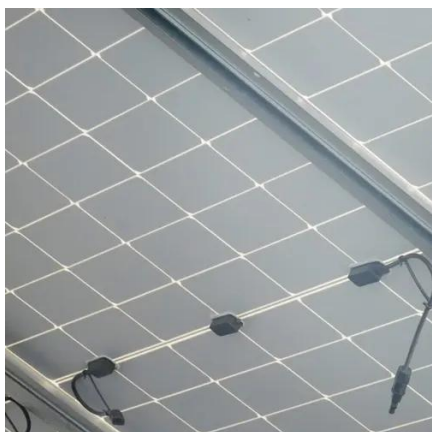
Compact digital substation container solutions

In contrast to conventional substations, the local assembly and construction works for container substations are reduced to a minimum. They are supplied completely prefabricated and only ...



Design, Supply, Delivery, Installation, Testing and ...

Project Synopsis: Design, Supply, Delivery, Installation, Testing and Commissioning of 33/11KV substations and 33KV lines Client's: M/S Nepal Electricity Authority.



Containerized Substations

Containerized mobile substations are sheltered and address applications in challenging environmental conditions including areas with high pollution, ...



[Nea Sub-Station Nepal , PDF , Electrical Substation](#)

The scope includes design, supply, installation, testing and commissioning of the transmission line and substation. It also provides details on the project background, connectivity, schedule of ...



[Nea Sub-Station Nepal , PDF , Electrical ...](#)

The scope includes design, supply, installation, testing and commissioning of the transmission line and substation. It also provides details on the project ...



[Nepal : Distribution System Upgrade and Expansion](#)

The objective of the project is to increase access to and improve quality and efficiency of electricity supply in selected areas of western Nepal.



Design study for new 132/33/11 kV power substation in Kingdom of Nepal

The site of the new substation is to be adjacent the 132kV transmission line power source and transmission line work will be minimized. The substation is to be constructed at the ...





6 substations are under construction in the valley to improve ...

Nepal Electricity Authority is constructing 6 substations of 132/11 kV at various locations in Kathmandu and Bhaktapur to improve the electricity transmission and distribution ...



Kathmandu Valley Substation Automation Project

Kathmandu Valley Substation Automation Project
PMD/PTDEEP/KVSAP-075/76/01: Design, Supply, Installation, Integration, Testing and Commissioning of Substation Automation System ...

6 substations are under construction in the valley ...

Nepal Electricity Authority is constructing 6 substations of 132/11 kV at various locations in Kathmandu and Bhaktapur to improve ...



Design study for new 132/33/11 kV power ...

The site of the new substation is to be adjacent the 132kV ...



Contact Us

For inquiries, pricing, or partnerships:

<https://www.sccd-sk.eu>

Phone: +32 2 808 71 94

Email: info@sccd-sk.eu

Scan QR code for WhatsApp.

