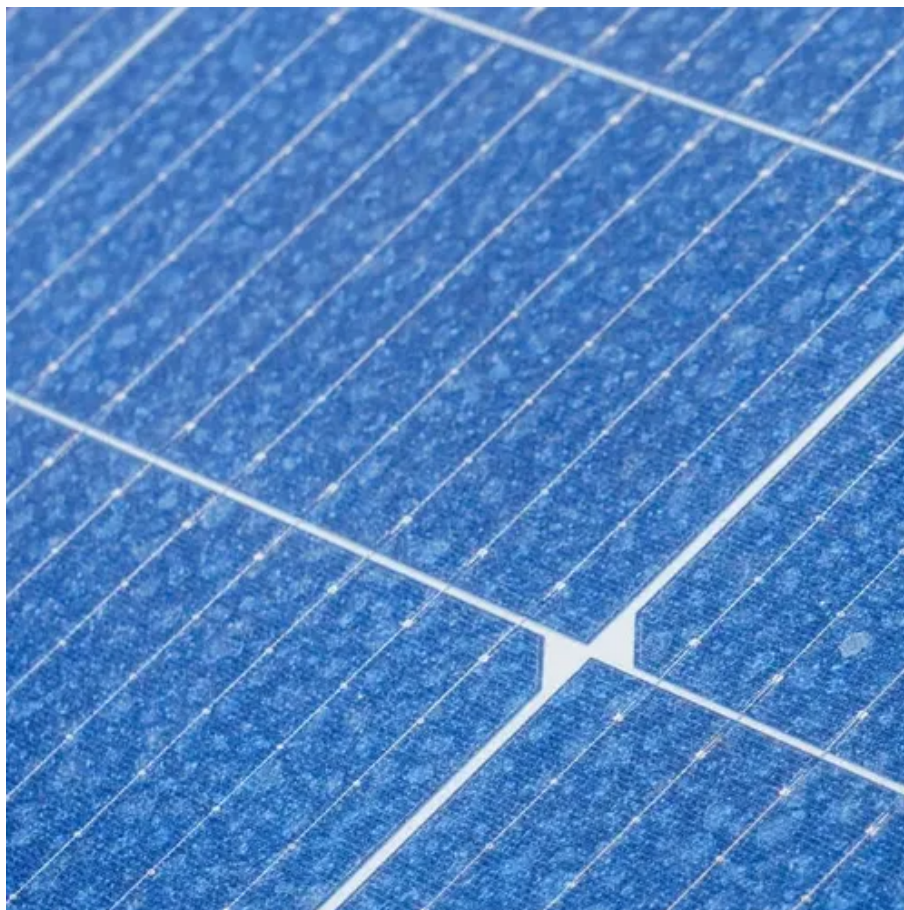




Inverter battery power off





Overview

Yes, you can switch off your inverter when the batteries are fully charged and it is not in use. But it is not advisable if you are not leaving home for 1 or 2 months.

Yes, you can switch off your inverter when the batteries are fully charged and it is not in use. But it is not advisable if you are not leaving home for 1 or 2 months.

Yes, you can switch off your inverter when the batteries are fully charged and it is not in use. But it is not advisable if you are not leaving home for 1 or 2 months. Because this will make you start the inverter manually during power cuts and reduce your battery backup time [due to self-discharge].

An inverter converts DC power from the battery to AC power for use by household appliances. Even when no appliances are running, the inverter still uses a small amount of power for automatic detection or to check the battery's health. When do I turn on the inverter?

The inverter can be left on all.

To keep an inverter from draining the battery, turn off the inverter when not in use and regularly maintain the battery. Proper usage and timely maintenance are crucial. Inverters are essential devices that convert DC power to AC power, making them vital during power outages. However, improper.

If you're exploring how to manage your solar power system, you might be wondering about the best way to switch off your solar inverter when it's not in use. Whether you're going on vacation, performing maintenance, or simply looking to save some energy, understanding how to properly turn off your.

The home inverter converts the DC currents to the AC currents and uses the batteries to store the energy for emergency purposes. When there is a cut-off, the inverter will be activated and power the home appliances. The inverter battery keep gets draining even if you turn off the inverter. So it.

An inverter provides AC power from DC power sources and is useful in powering electronics and electrical equipment. They are also used in the switched-mode power supply inverting stages. How to Switch Off Inverter When Not in Use?



To know how to switch off inverter when not in use you have two.



Inverter battery power off



Inverter Usage Guide: Should You Turn It Off to Extend Its Life

By turning off the inverter when not in use, you can reduce the overall runtime and extend the lifespan of the device. This is particularly important for battery-powered inverters, ...

Power inverter buying guide

What is an inverter? A power inverter is a device that converts low-voltage DC (direct current) power from a battery to standard household AC (alternating current) power.



[How to Choose the Right Inverter For Home? , inverter](#)

An inverter is an electrical device that converts direct current (DC) into alternating current (AC). Since most household appliances and electronic devices operate on AC power, ...

The Best Power Inverters

A power inverter transforms direct current (DC) power into alternating current (AC) power that powers many common devices and appliances. Because DC power is derived from ...



[Power Inverters: What Are They & How Do They Work?](#)

What is an Inverter? An inverter (or power inverter) is defined as a power electronics device that converts DC voltage into AC voltage. While DC power is common in ...

[How to Switch Off Inverter When Not in Use?](#)

Well, yes, you can switch off your inverter when your batteries are fully charged and it is not in use. Once the batteries are fully charged the consumption power is less than ...



[How to switch off Inverter when not in use](#)

Whether you're going on vacation, performing maintenance, or simply looking to save some energy, understanding how to properly turn off your inverter is important for both ...



[Power Inverters at Tractor Supply Co.](#)

Power Inverters at Tractor Supply Co. Buy online, free in-store pickup. Shop today!



Inverter Generators

Inverter generators supply quiet, portable power for camping, electronics, and home backup. Shop versatile generator options today at Lowe's.

What Is an Inverter?

A power inverter is an electrical component that converts direct current (DC) to alternating current (AC). Inverters are an essential part of many electronic devices and ...



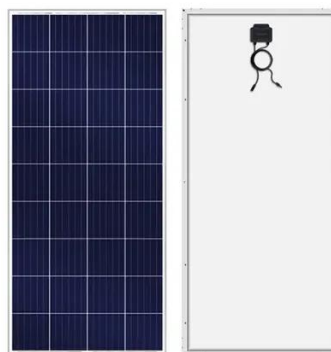
Power inverter

A power inverter, inverter, or invertor is a power electronic device or circuitry that changes direct current (DC) to alternating current (AC). [1] The resulting AC frequency obtained depends on ...



Inverter On/Off Problem: Complete Troubleshooting Guide With ...

Power inverters are the backbone of any backup power system, seamlessly converting DC battery power into AC power for your home appliances. When your inverter ...



[How to Keep Inverter from Draining Battery](#)

Learn how to optimize inverter settings to prevent battery drain. Adjust voltage settings and use power saving modes for better performance.

[Can inverter be switch off when not in use?](#)

Yes, you can switch off your inverter when the batteries are fully charged and it is not in use. But it is not advisable if you are not leaving home for 1 or 2 months.



[Powering On: The Pros and Cons of Leaving Your Inverter On All ...](#)

Turning an inverter on and off repeatedly can cause wear and tear on the internal components, leading to a shorter lifespan. Leaving it on continuously can reduce the stress on ...



Can inverter be switch off when not in use?

Yes, you can switch off your inverter when the batteries are fully charged and it is not in use. But it is not advisable if you are not ...



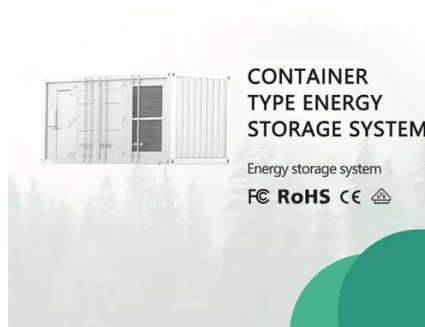
What Does An Inverter Do? Complete Guide To Power Conversion

An inverter - the crucial component that bridges the gap between different types of electrical power. As an electrical engineer with over 15 years of experience in power systems, ...



Can I leave My Inverter ON All the Time?

Yes. It is possible but not advisable. When the inverter is kept on, it will start draining the battery quickly. Even if no electronic appliance is connected to the inverter, the ...



Should I Leave My Inverter On All the Time?

Turning off the inverter means losing all your settings. Even if the system has an option to save these, it is a hassle to have to turn it on again. Shutting off your 750W inverter for example, ...



[Do I Need to Turn Off My Inverter When Not in Use?](#)

If you are away from home for 2-3 months, turning off the inverter will prevent the battery from self-discharging. If the motorhome is parked for an extended period, you must ...



[How to Keep Inverter from Draining Battery](#)

Learn how to optimize inverter settings to prevent battery drain. Adjust voltage settings and use power saving modes for better ...



Amazon : Power Inverters

Shop through a wide selection of Power Inverters at Amazon . Free shipping and free returns on eligible items.





Contact Us

For inquiries, pricing, or partnerships:

<https://www.sccd-sk.eu>

Phone: +32 2 808 71 94

Email: info@sccd-sk.eu

Scan QR code for WhatsApp.

