



Is the 220v inverter normal





Overview

A 220V inverter is not only normal but often necessary for efficient power conversion. By understanding your voltage requirements, selecting certified equipment, and partnering with experienced providers like EK SOLAR, you can ensure safe and optimized energy systems.

A 220V inverter is not only normal but often necessary for efficient power conversion. By understanding your voltage requirements, selecting certified equipment, and partnering with experienced providers like EK SOLAR, you can ensure safe and optimized energy systems.

A 220v inverter, then, is designed to output power at a voltage of 220 volts. Now, let's talk about the suitability of 220v inverters for home use. One of the main reasons people consider using a 220v inverter at home is for backup power. In areas where power outages are common, having an inverter.

One solution that has gained popularity is the 220 volt inverter, which converts direct current (DC) into alternating current (AC). This guide aims to provide an in-depth understanding of 220 volt inverters, their types, applications, and how to choose the right one for your needs. What is a 220.

A 220V system delivers more power efficiently with less amperage, making it ideal for higher-capacity cooling and heating. ☐☐ Which One Is Right for Your Space?

Room Size & Load Considerations 110V mini splits are often best for: 220V mini splits are better suited for: General BTU recommendations:.

Question1: What is a 220 volt power inverter?

Answer 1: A 220 volt power inverter is a device that converts low-voltage DC (direct current) power to standard household AC (alternating current) power. It allows you to operate household appliances and electrical equipment using the power produced by.

Most countries use 220–240V AC for household and commercial power systems. Inverters are designed to align with regional voltage standards to ensure compatibility with appliances and grid connections. Here's why 220V conversion is

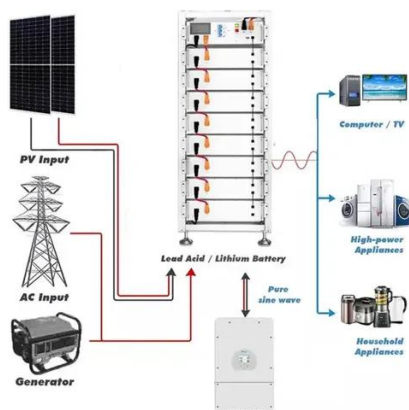


not only normal but also advantageous: Energy Efficiency: Higher.

A 220V inverter is a power electronic device that converts direct current (DC) power into alternating current (AC) power at a voltage of approximately 220 volts. These inverters are commonly used to power appliances that require a 220V or 240V AC power source when only a DC power source, such as a.



Is the 220v inverter normal



[Voltage Differences: 110V, 120V, 220V, 240V](#)

You'll often hear voltages in your home referred to as 110V, 115V, or 120V. This can be confusing but the bottom line is they are referring to the exact same thing. 120V is the AC voltage on a ...

What is a 220V Inverter? - Ova

In summary, a 220V inverter is a versatile device that enables the use of standard AC appliances in situations where only DC power is readily accessible. The choice of inverter ...



[Voltage Differences: 110V, 120V, 220V, 240V](#)

You'll often hear voltages in your home referred to as 110V, 115V, or 120V. This can be confusing but the bottom line is they are referring to the exact ...

[Are 220v inverters suitable for home use?](#)

If not maintained properly, the battery life can be shortened, and the performance of the inverter system can be affected. But overall, despite these



drawbacks, 220v inverters can be very ...



Best 12 Volt to 220 Volt Pure Sine Wave Inverters for Home and ...

Finding a reliable 12 volt to 220 volt inverter is essential for converting DC power from batteries into steady AC power for various applications. Whether for home backup, RV ...



[Best 12 Volt to 220 Volt Pure Sine Wave Inverters ...](#)

Finding a reliable 12 volt to 220 volt inverter is essential for converting DC power from batteries into steady AC power for various ...



220 Volt Inverter: The Ultimate Guide to Choosing the Right One

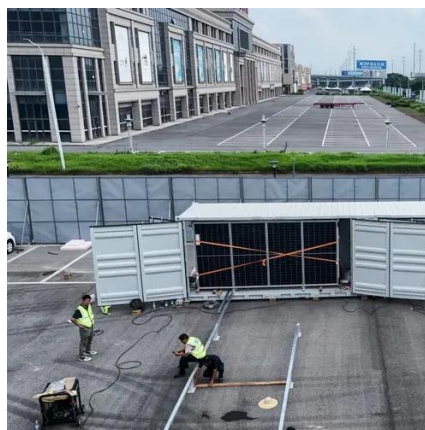
For sensitive electronics, a pure sine wave inverter is recommended. For basic uses, a modified sine wave inverter may suffice. If you plan to use the inverter for outdoor ...





Buyer's Guide for 220 Volt Inverters , 220 Volt Appliances , 240 ...

The modified sine inverter is more cost-effective than true sine wave inverter. A pure sine inverter will definitely provide you the best electric current but it will be more expensive. So you need to ...



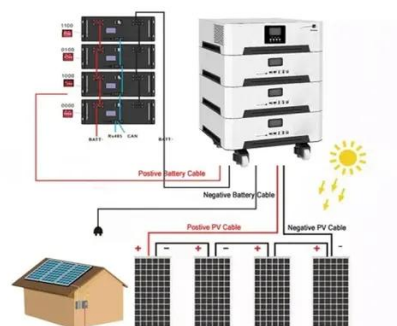
Do You Need a 110V or 220V Mini Split? Choosing the Right ...

While both voltages offer inverter-driven variable-speed compressors for energy savings, 220V units can maintain performance under heavier loads. Over time, operating costs ...



Pros and Cons of Inverter Generators

Many inverter models in our generator ratings earn a very good or even an excellent score for noise, making them especially useful if you plan to use your generator for ...



Pros and Cons of Inverter Generators

Many inverter models in our generator ratings earn a very good or even an excellent score for noise, making them especially useful ...



[Inverter 220V Generator: Power Guide , ReelMind](#)

Unlike conventional generators, inverter models convert DC to AC power with minimal harmonic distortion, making them safe for sensitive electronics like laptops and medical devices. The ...



Is It Normal for an Inverter to Convert to 220V Understanding ...

A 220V inverter is not only normal but often necessary for efficient power conversion. By understanding your voltage requirements, selecting certified equipment, and partnering with ...

[Do You Need a 110V or 220V Mini Split? Choosing ...](#)

While both voltages offer inverter-driven variable-speed compressors for energy savings, 220V units can maintain performance ...





Contact Us

For inquiries, pricing, or partnerships:

<https://www.sccd-sk.eu>

Phone: +32 2 808 71 94

Email: info@sccd-sk.eu

Scan QR code for WhatsApp.

