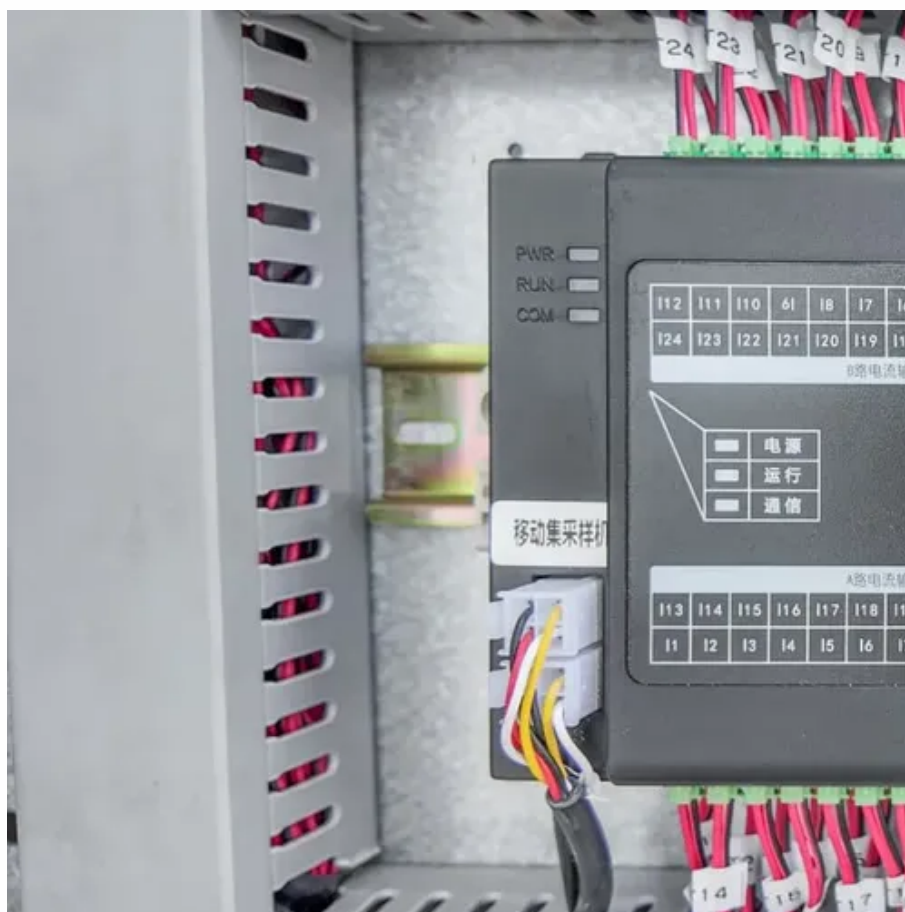




Is the electricity used by 5G base stations in communications calculated as shared





Overview

Should power consumption models be used in 5G networks?

This restricts the potential use of the power models, as their validity and accuracy remain unclear. Future work includes the further development of the power consumption models to form a unified evaluation framework that enables the quantification and optimization of energy consumption and energy efficiency of 5G networks.

Do base stations dominate the energy consumption of the radio access network?

Furthermore, the base stations dominate the energy consumption of the radio access network. Therefore, it is reasonable to focus on the power consumption of the base stations first, while other aspects such as virtualization of compute in the 5G core or the energy consumption of user equipment should be considered at a later stage.

Does 5G increase energy consumption?

However, this technological leap comes with a substantial increase in energy consumption. Compared to its predecessor, the fourth-generation (4G) network, the energy consumption of the 5G network is approximately three times higher .

How can we improve the energy efficiency of 5G networks?

To improve the energy efficiency of 5G networks, it is imperative to develop sophisticated models that accurately reflect the influence of base station (BS) attributes and operational conditions on energy usage.



Is the electricity used by 5G base stations in communications calculated

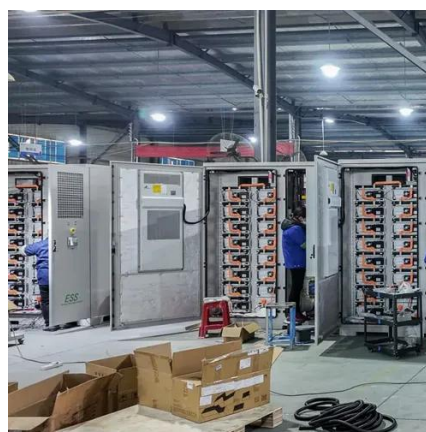


[A technical look at 5G energy consumption and performance](#)

5G base stations use high power consumption and high RF signals, which require more signal processing for digital and ...

[A technical look at 5G energy consumption and performance](#)

Today we see that a major part of energy consumption in mobile networks comes from the radio base station sites and that the consumption is stable.



What is 5G Energy Consumption?

With 5G projected to increase capacity up to approximately 1000-fold and high frequency millimeter wave (mmWave) transmission driving exponentially higher cell density, this ...

[Comparison of Power Consumption Models for 5G Cellular ...](#)

The first step when modeling the energy consumption of wireless communication systems is to derive models of the power consumption for



the main system components, which ...



Comparison of Power Consumption Models for 5G Cellular Network Base

The first step when modeling the energy consumption of wireless communication systems is to derive models of the power consumption for the main system components, which ...

Power Consumption Modeling of 5G Multi-Carrier Base ...

However, the energy consumption of future networks is concerning. Deployed 5G networks have been estimated to be approximately four times more energy efficient than 4G ones.



Energy-efficiency schemes for base stations in 5G heterogeneous

In today's 5G era, the energy efficiency (EE) of cellular base stations is crucial for sustainable communication. Recognizing this, Mobile Network Operators are actively prioritizing EE for ...



Why does 5g base station consume so much power and how to ...

5G base stations use high power consumption and high RF signals, which require more signal processing for digital and electromechanical units, and also put greater pressure ...

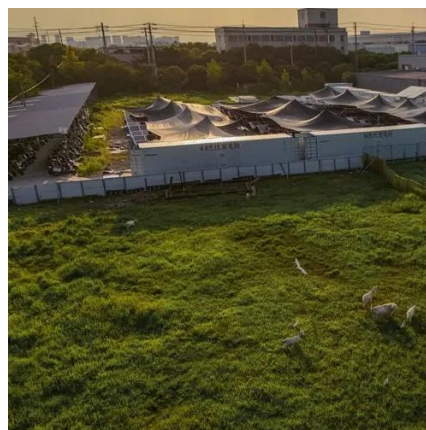


Power consumption based on 5G communication

This paper proposes a power control algorithm based on energy efficiency, which combines cell breathing technology and base station sleep technology to reduce base station energy ...

Modelling the 5G Energy Consumption Using Real-world ...

To address this, we propose a novel deep learning model for 5G base station energy consumption estimation based on a real-world dataset. Unlike existing methods, our approach integrates ...



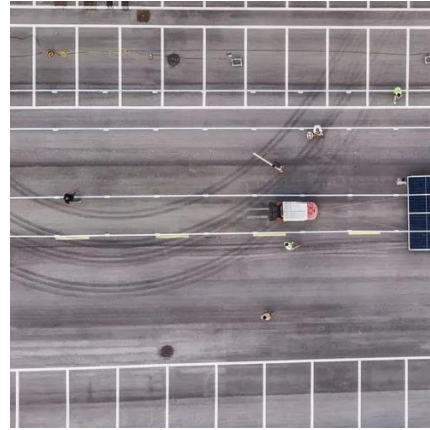
5G and energy internet planning for power and communication ...

Our study introduces a communications and power coordination planning (CPCP) model that encompasses both distributed energy resources and base stations to improve ...



5G and Energy Efficiency

Introduction From the introduction of "1G" over 30 years ago, to today with the widely-used "4G" and the debut of "5G", a lot has changed and notably in the way people work, live and ...





Contact Us

For inquiries, pricing, or partnerships:

<https://www.sccd-sk.eu>

Phone: +32 2 808 71 94

Email: info@sccd-sk.eu

Scan QR code for WhatsApp.

