



# Is there a base station factory in Sana a





## Overview

---

The IDF struck various locations across Sanaa, including Sanaa International Airport, electric power stations, and a cement factory, to weaken the Houthis.

The IDF struck various locations across Sanaa, including Sanaa International Airport, electric power stations, and a cement factory, to weaken the Houthis.

Israeli army claims 'fully disabling' the civilian facility, saying it also hit a concrete factory and power stations. Smoke billows after an Israeli air strike on Houthi infrastructure in Sanaa, Yemen on May 6, 2025 [Adel al-Khader/Reuters] Yemen's Houthi rebels have pledged to respond to the.

The IDF struck various locations across Sanaa, including Sanaa International Airport, electric power stations, and a cement factory, to weaken the Houthis. IAF airstrikes in Sanaa, Yemen, May 6, 2025. The IDF struck various locations across Sanaa, including Sanaa International Airport, electric.

These included Sanaa's international airport, two power stations, and several western ports. Sanaa's international airport, often closed or running very restricted commercial services in the last 10 years or so amid Houthi control of the country, shares a runway with an adjacent Air Force base.

Caption: Smoke billows after an Israeli air attack on Yemen's Sana'a on May 6, 2025. (Photo: Reuters) The Israeli regime has bombed the international airport of the Yemeni capital, Sana'a, as well as several major power stations, in a continued escalation of its aggression against the Arab country.

Smoke billows after an Israeli airstrike on Houthi infrastructure, in Sanaa, Yemen May 6, 2025. REUTERS/Khaled Abdullah Israeli airstrikes destroyed Sana'a International Airport and knocked it out of service on Tuesday. The strikes also targeted the electricity stations in Dhabhan and Hazziz, north.

The Ministry of Health in Sana'a reported the martyrdom of three civilians and the injury of 38 others due to Israeli airstrikes that targeted several locations, including Sana'a International Airport, the Amran Cement Factory, the Asr area in the capital, and the Huziaz power station in the Sanhan. What happened at Sanaa International Airport?



Israel struck several sites in Yemen on Thursday including the international airport serving the capital Sanaa and the adjacent al-Dailami Air Base. Houthi Al Masirah TV reported that the Israeli strikes killed three, including two in the strike on Sanaa International Airport. Eleven more were injured, it added.

Is Sanaa Airport 'completely disabled'?

The post IDF says Sanaa airport 'completely disabled'; power stations, cement factory also targeted appeared first on The Times of Israel. Screenshot from social media said to show Israeli strikes on Sanaa International Airport in Yemen's Houthi-controlled capital, May 5, 2025. (X screenshot).

Why did the IDF strike Sanaa?

Additionally, the IDF says it targeted several power stations near Sanaa that were used by the Houthis, along with a cement factory north of the capital, used by the group to construct infrastructure and tunnels. The strike on the concrete factory "constitutes a blow to the regime's economy and its military buildup," the military says.

Why did the IDF destroy Sanaa International Airport?

The IDF in a statement confirms launching a wave of airstrikes in Yemen, saying it destroyed the Houthi-controlled Sanaa International Airport, in response to the Iran-backed group's repeated missile and drone attacks on Israel, including a hit on Ben Gurion Airport on Sunday that wounded several people.



## Is there a base station factory in Sana'a



### Israel Strikes Houthi-Controlled Ports and a Power Plant in Yemen

The Israeli military said it had bombed the Hezyaz power station near Sana'a, the Houthi-controlled capital, and the Red Sea ports of Hudaydah and Ras Isa.

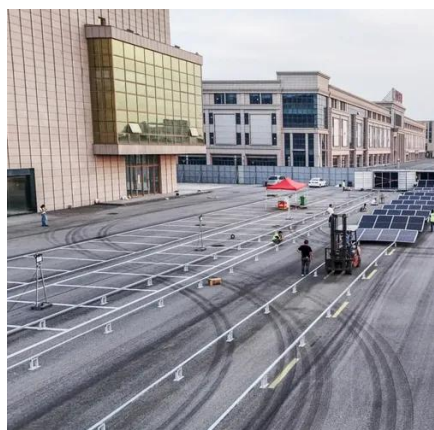
### Israeli airstrikes kill three Yemeni civilians, injure 38 in Sana'a

The Israeli attacks involved multiple air raids, striking Sana'a International Airport, Huziaz and Dhahban power stations, and various sites in the capital. Additionally, the Amran ...



### [Israeli warplanes bomb Yemen's Sana'a airport, power plants](#)

The Israeli regime has bombed the international airport of the Yemeni capital, Sana'a, as well as several major power stations, in a continued escalation of its aggression ...

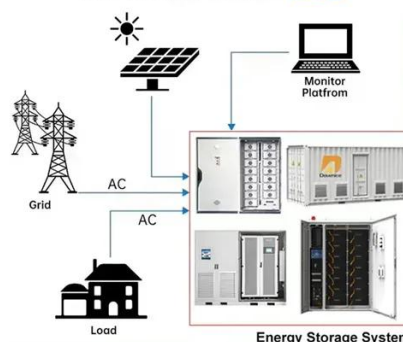


### [Israeli warplanes bomb Yemen's Sana'a airport, ...](#)

The Israeli regime has bombed the international airport of the Yemeni capital, Sana'a, as well as several major power stations, in a ...



## DISTRIBUTED PV GENERATION + ESS



### [IDF says Sanaa airport 'completely disabled'; power stations](#)

The strike on the concrete factory "constitutes a blow to the regime's economy and its military buildup," the military says.

### **Inside Israel's largest Yemen strike: Control tower, power stations ...**

Israeli officials confirmed the country's largest airstrike in Yemen since the war began, targeting Houthi-controlled sites in Sanaa and other key locations.

PUSUNG-R (Fit for 19 inch cabinet)



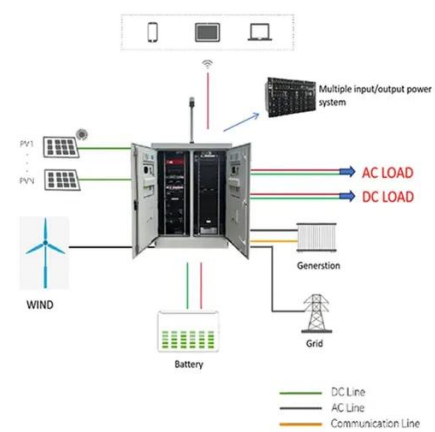
### **Israel strikes Sanaa airport, power stations, ports in Yemen**

Israel struck several sites in Yemen on Thursday including the international airport serving the capital Sanaa and the adjacent al-Dailami Air Base.



## [Israel Air Force airstrikes across Sanaa against ...](#)

The IDF struck various locations across Sanaa, including Sanaa International Airport, electric power stations, and a cement factory, ...



## **Israeli Airstrikes Destroy Sanaa Airport, Power Stations, and ...**

Israeli airstrikes destroyed Sana'a International Airport and knocked it out of service on Tuesday. The strikes also targeted the electricity stations in Dhabhan and Hazziz, north ...

## [Israel strikes Sanaa airport, power stations, ports ...](#)

Israel struck several sites in Yemen on Thursday including the international airport serving the capital Sanaa and the adjacent al ...



## **Israel Air Force airstrikes across Sanaa against Houthi terrorists**

The IDF struck various locations across Sanaa, including Sanaa International Airport, electric power stations, and a cement factory, to weaken the Houthis.



## [Yemen's Houthis vow retaliation after Israeli ...](#)

Earlier, the Houthi-affiliated Al Masirah TV confirmed that among the sites targeted is a cement factory to the north of the capital ...



## **Not Just The Airport: IDF Strikes Cement Factory, Power Stations ...**

Houthi -run Lebanon-based Al Masirah TV corroborated this by stating that the IDF also struck Dhabhan Central Power station in south-east Sanaa, and the al-Imran cement ...

## [Israeli Airstrikes Destroy Sanaa Airport, Power ...](#)

Israeli airstrikes destroyed Sana'a International Airport and knocked it out of service on Tuesday. The strikes also targeted the ...



## [Israel Strikes Houthi-Controlled Ports and a Power ...](#)

The Israeli military said it had bombed the Hezyaz power station near Sana, the Houthi-controlled capital, and the Red Sea ports of ...



## [Inside Israel's largest Yemen strike: Control tower, ...](#)

Israeli officials confirmed the country's largest airstrike in Yemen since the war began, targeting Houthi-controlled sites in Sanaa ...



## **Yemen's Houthis vow retaliation after Israeli attacks on Sanaa**

Earlier, the Houthi-affiliated Al Masirah TV confirmed that among the sites targeted is a cement factory to the north of the capital and a power station in the Bani al-Harith area.



## Contact Us

---

For inquiries, pricing, or partnerships:

<https://www.sccd-sk.eu>

Phone: +32 2 808 71 94

Email: [info@sccd-sk.eu](mailto:info@sccd-sk.eu)

Scan QR code for WhatsApp.

