



Is two degrees of outdoor power enough





Overview

Do NOT leave even your outdoor extension cord outside more than a day or two. Left outside over extended periods, cord materials can breakdown, potentially resulting in sparking, fire, and shock. Always follow outdoor electrical precautions. Pick the right cord for the job.

Do NOT leave even your outdoor extension cord outside more than a day or two. Left outside over extended periods, cord materials can breakdown, potentially resulting in sparking, fire, and shock. Always follow outdoor electrical precautions. Pick the right cord for the job.

Summary: Wondering how to calculate the energy consumption of a 1800W outdoor power supply?

This guide breaks down the math, explores real-world applications, and highlights how portable power stations like those from EK SOLAR can meet your needs for camping, construction, or eme HOME / How Many.

Electrical codes such as the National Electrical Code (NEC) in the US or local wiring regulations mandate proper load calculations for outdoor outlets. Compliance guarantees that installations meet safety standards and pass inspections. If too many devices or high-powered equipment are plugged into.

Let's break down the most frequently asked questions about outdoor outlets and circuits—so you can avoid surprises and power your space safely. 1. How Many Outdoor Outlets Should My Home Have?

The National Electrical Code (NEC) requires at least one outdoor outlet in the front and one in the rear.

Regardless of your type of facility, there are three main considerations you should keep in mind when selecting an outdoor power solution: 1. Safety Any outdoor power solution you select should be designed with safety in mind. This means the solution should include safety features such as proper.

Mr. Electric outlines the safest methods for running power outdoors. Plan your route and power needs. Use weatherproof, outdoor-rated conduit and wiring. Dig



trenches for underground cables, following local codes. Install GFCI outlets for safety. Test the system before use. Test the system before.

Determining the ideal wattage for your outdoor lighting fixtures like spotlights, wall washers, or eave lights can be challenging. The wattage you choose impacts important factors like properly illuminating pathways with bollards lights, providing security lighting bright enough to cover your full. How do you run power outdoors?

Mr. Electric outlines the safest methods for running power outdoors. Plan your route and power needs. Use weatherproof, outdoor-rated conduit and wiring. Dig trenches for underground cables, following local codes. Install GFCI outlets for safety. Test the system before use. Test the system before use. Looking to 'amp up' your outdoor experience?

How do I choose the right wattage for my outdoor space?

When selecting lighting for your outdoor space, determining the right wattage is key to creating an effective lighting plan. There are a few key factors to consider that will inform your wattage needs: The size of the outdoor area you wish to illuminate is the starting point for determining wattage.

Which wattage is best for outdoor lighting?

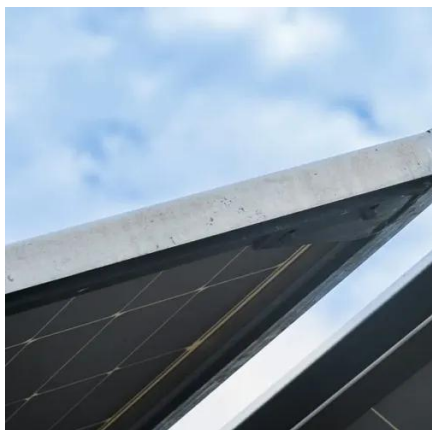
Obviously, 200 watts is mainly suitable for outdoor lighting applications. With lights rating 40 watts, you can adequately illuminate the outdoor areas of your home. Such lamps are not blinding and provide enough illumination to showcase your home. However, in night conditions, 80 wattage for outdoor lights are the go-to option.

Why should you choose a dimmable outdoor lighting system?

Choosing dimmable outdoor lighting systems provides helpful flexibility to easily control brightness levels and ambiance. Using lower light output settings as needed, while still having the capability to go to full brightness, prolongs overall bulb and fixture lifespan by reducing electrical stress.



Is two degrees of outdoor power enough



[Outdoor Outlets: Voltage & Residential Wiring](#)

For outdoor use, 120-volt outlets handle most household and outdoor tasks perfectly. Think landscape lighting that makes your garden glow, small power tools for those ...

[Outdoor Subpanel: Essential Guide for Efficient ...](#)

With proper installation, you can ensure that your outdoor electrical needs comply with the National Electrical Code (NEC) and meet ...



Outdoor Subpanel: Essential Guide for Efficient Power Distribution

With proper installation, you can ensure that your outdoor electrical needs comply with the National Electrical Code (NEC) and meet the necessary ampacity requirements. ...

[Wattage For Outdoor Lights: Options To Consider](#)

It is the power outdoor lighting will use to produce sufficient illumination. Therefore, outdoor light wattage will always vary depending ...



[What's the Best Way to Run Power Outside? , Mr. Electric](#)

Short-Term Power Supply Essential Outdoor Extension Cord Safety Safely Installing Long-Term Power Solutions Installing A GFCI Outlet Outside Placing The Outlet For those in need of power outdoors for a short time, such as to trim your bushes, power a bounce house for your kid's birthday, or provide lighting for a party, an extension cord will get the job done for a day or two. Be certain to only use extension cords marked for outdoor use, which are designed to withstand moisture, temperature changes, the See more on mrelectric lumarysmart

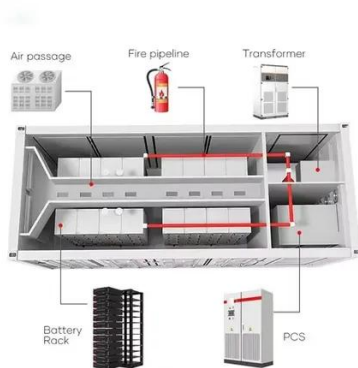
Outdoor Lighting Wattage Guide - Lumary

Learn how to determine the ideal wattage for any outdoor lighting purpose, whether installing security flood lights, pathway bollards, or accent spotlights on trees.

Outdoor Lighting Wattage Guide

Learn how to determine the ideal wattage for any outdoor lighting purpose, whether installing security flood lights, pathway bollards, or accent spotlights on trees.





Assessing Load Capacity Before Installing Garden Power Outlets

Powering garden tools like electric mowers, hedge trimmers, water pumps, and lighting requires stable and adequate voltage supply. Insufficient load capacity can lead to ...

Bringing The Indoors Out: The Ultimate Guide to Outdoor Power ...

Your outdoor power solution needs to be able to survive the harsh outdoor elements, including rain, snow, extreme temperatures, and harsh UV exposure. The power solution should be ...

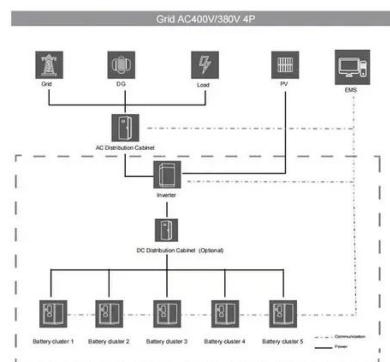


Outdoor Outlets & Circuits Customer Questions , Milton

Lights and outlets share power, and if you're running a high-wattage device like a power washer, it could cause your lights to dim or flicker. Always check that the combined load ...

Wattage For Outdoor Lights: Options To Consider

It is the power outdoor lighting will use to produce sufficient illumination. Therefore, outdoor light wattage will always vary depending on the illumination you need. As we ...



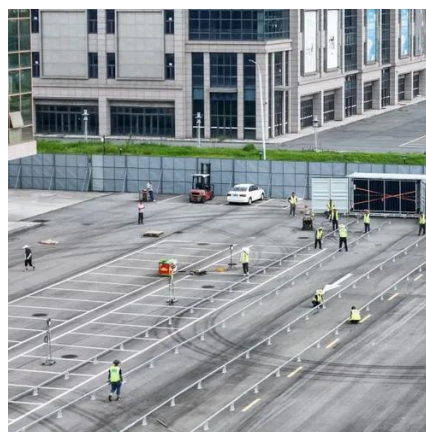


[Ultimate Guide to Outdoor Power Strips: Buyer's Tips](#)

Discover the benefits, features, and safety tips of using outdoor power strips for reliable, safe power in any outdoor setup.

How Many Degrees of Electricity Does a 1800W Outdoor Power ...

A 1800W outdoor power supply is a popular choice for its balance of portability and capability - but how much electricity does it actually use? Let's simplify the calculations and explore ...



[What's the Best Way to Run Power Outside? , Mr. Electric](#)

Do NOT leave even your outdoor extension cord outside more than a day or two. Left outside over extended periods, cord materials can breakdown, potentially resulting in ...





Contact Us

For inquiries, pricing, or partnerships:

<https://www.sccd-sk.eu>

Phone: +32 2 808 71 94

Email: info@sccd-sk.eu

Scan QR code for WhatsApp.

