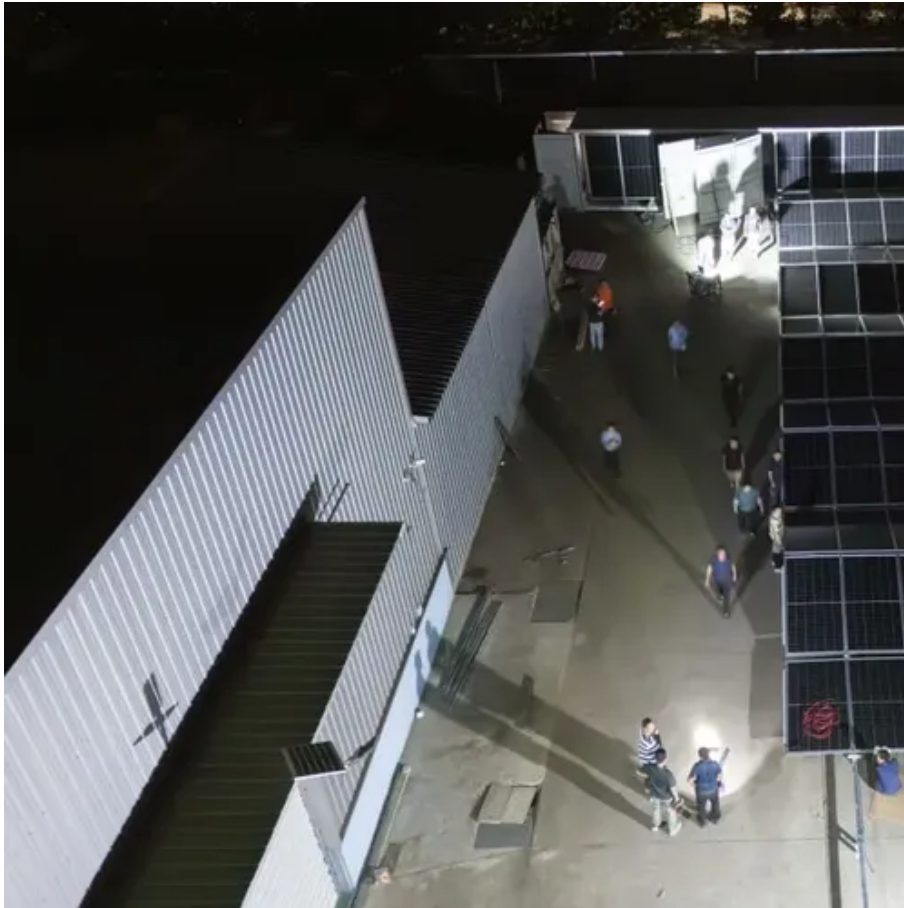




Island Solar Air Conditioning AUX





Island Solar Air Conditioning AUX



- ✓ 50KW/100KWH
- ✓ HIGHER POWER OUTPUT IN OFF-GRID MODE
- ✓ CONVENIENT OPERATION & MAINTENANCE
- ✓ PRE-WIRED

island noun

Definition of island noun in Oxford Advanced Learner's Dictionary. Meaning, pronunciation, picture, example sentences, grammar, usage notes, synonyms and more.

Island

An island is any area of land which is smaller than the smallest continent and is entirely surrounded by water. Islands may be found in oceans, seas, lakes, or rivers.



[Island , Definition, Types, Examples, & Facts , Britannica](#)

Island, any area of land smaller than a continent and entirely surrounded by water. Islands may occur in oceans, seas, lakes, or rivers. A group of islands is called an ...

[Visit Iceland , Official travel info for Iceland](#)

Expansive Glaciers. Shimmering Northern Lights. Hot springs and geysers. Vibrant culture and Viking history. Vast volcanic landscapes and black



sand beaches.



Island

Dymaxion map (Fuller map) with continental landmasses (I,II,III,IV) and largest islands (1-30) roughly to scale An island is an area of land surrounded by water on all sides that is distinct ...

Island

There are six major kinds of islands: continental (1), tidal (2), barrier (3), oceanic (4), coral (5), and artificial (6). Continental islands (1) were once connected to a continent. ...



ISLAND , English meaning

Idiom an island of peace, calm, sanity, etc. (Definition of island from the Cambridge Advanced Learner's Dictionary & Thesaurus © Cambridge University Press)





What Is an Island, Exactly?

"An island is a body of land surrounded by water, above water at high tide, and smaller than a continent," he says.



Island Definition, Types & Facts

There are six primary types of islands: continental, tidal, barrier, oceanic, coral, and artificial. Learn about the processes involved in each type in the subsequent sections. Continental

ISLAND Definition & Meaning

Island can be traced back to Old English *īgland*, composed of two elements *īg* and *land*. *Land*, as we might expect means "land," but *īg* means "island" in Old English.





Contact Us

For inquiries, pricing, or partnerships:

<https://www.sccd-sk.eu>

Phone: +32 2 808 71 94

Email: info@sccd-sk.eu

Scan QR code for WhatsApp.

