



# LTE base stations can communicate wirelessly





## Overview

---

In communications, a base station is a communications station installed at a fixed location and used to communicate as part of one of the following: • a system, or; • a system such as or .

LTE base station antennas are the backbone of modern wireless communication. They enable seamless data transfer between devices and cellular networks, supporting everything from voice calls to high-speed internet.

LTE base station antennas are the backbone of modern wireless communication. They enable seamless data transfer between devices and cellular networks, supporting everything from voice calls to high-speed internet.

LTE base station antennas are the backbone of modern wireless communication. They enable seamless data transfer between devices and cellular networks, supporting everything from voice calls to high-speed internet. As 5G begins to roll out, understanding how LTE antennas operate remains crucial for.

A base station is called node B in 3G, eNB in LTE (4G), and gNB in 5G. The term is used in the context of mobile telephony, wireless computer networking and other wireless communications and in land surveying. In surveying, it is a GPS receiver at a known position, while in wireless communications.

The present-day tele-space is incomplete without the base stations as these constitute an important part of the modern-day scheme of wireless communications. They are referred to as cell towers or cellular antennas. These types of objects are an inevitability since they serve the purpose of.

Cellular Long-Term Evolution (LTE) networks have revolutionized the way we communicate, providing high-speed wireless communication for mobile devices. But how do these networks actually work?

Let's delve into the fascinating world of LTE networks. Before we dive into the specifics of LTE, it's.

A base station, also known as a cell tower or base transceiver station (BTS), is a crucial component of wireless communication networks. It serves as the central point for communication between mobile devices and the rest of the network. Base stations are used in various wireless communication.



Base stations are critical components in wireless communication networks, serving as the intermediary between mobile devices and the core network. They play a vital role in ensuring seamless connectivity, efficient data transmission, and reliable communication services. This blog explores the.



## LTE base stations can communicate wirelessly



### How LTE Base Station Antenna Works -- In One Simple Flow ...

LTE base station antennas are the backbone of modern wireless communication. They enable seamless data transfer between devices and cellular networks, supporting ...

### Base Stations

Base stations form a key part of modern wireless communication networks because they offer some crucial advantages, ...



### [What Are Base Station Antennas? Complete Guide](#)

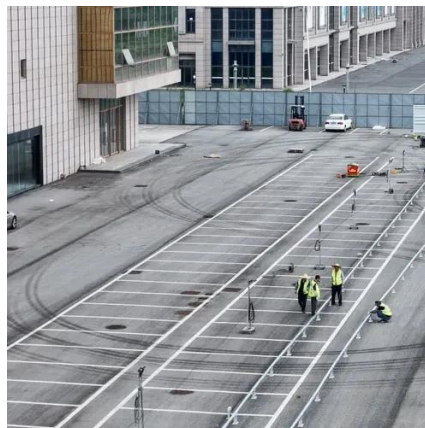
Base station antennas play a fundamental role in wireless communication systems by enabling the signal transmission and reception between the base stations and mobile devices.

### [What Is Base Station In Wireless Communication?](#)

In wireless communication, a base station is a critical component that enables wireless communication between devices. It serves as a



central point of connection for ...



### Base station

In radio communications, a base station is a wireless communications station installed at a fixed location and used to communicate as part of one of the following: a push-to-talk two-way radio ...



### Base station

Overview Wireless communications Land surveying Computer networking See also

In radio communications, a base station is a wireless communications station installed at a fixed location and used to communicate as part of one of the following: o a push-to-talk two-way radio system, or; o a wireless telephone system such as cellular CDMA or GSM cell site.



### Base Stations

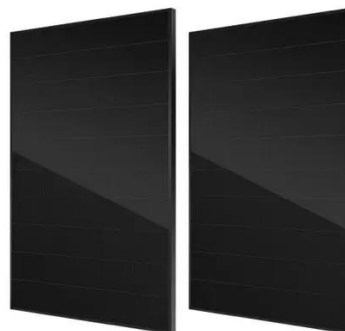
Base stations form a key part of modern wireless communication networks because they offer some crucial advantages, such as wide coverage, continuous communications and ...





## [LTE Base Stations: The Backbone of Mobile Connectivity](#)

What is an LTE Base Station? An LTE base station, also known as an eNodeB (evolved Node B), is a crucial element in LTE networks responsible for communicating directly ...

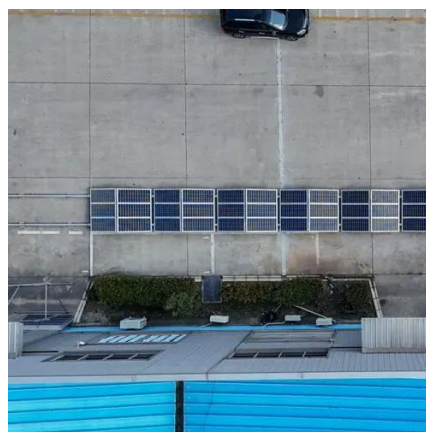


## [4G LTE Tutorial: Basics, Architecture, Channels, and More](#)

LTE (Long-Term Evolution) supports two duplexing modes for radio communication: Frequency Division Duplex (FDD) and Time Division Duplex (TDD). The frame structure in LTE differs for ...

## **What Is the Role of a Base Station in Wireless Communication?**

Base stations are critical components in wireless communication networks, serving as the intermediary between mobile devices and the core network. They play a vital role in ...



## [Understanding How Cellular LTE Networks Work](#)

These networks are composed of interconnected cells, each served by a base station. When a mobile device enters a cell, it communicates with the base station, allowing data to be ...



## [Demystifying LTE Antennas: Everything You Need to Know](#)

LTE antennas are designed to operate in the radio frequency (RF) spectrum, typically within the 700 MHz to 2.7 GHz frequency bands. These antennas are constructed to ...





## Contact Us

---

For inquiries, pricing, or partnerships:

<https://www.sccd-sk.eu>

Phone: +32 2 808 71 94

Email: [info@sccd-sk.eu](mailto:info@sccd-sk.eu)

Scan QR code for WhatsApp.

