



Lithium titanate battery solar container energy storage system





Lithium titanate battery solar container energy storage system

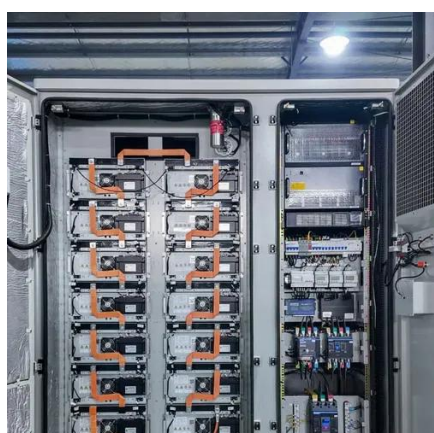


[Lithium: Side Effects and Precautions](#)

Lithium is a mood stabilizer used to treat bipolar disorder. Lithium side effects may include diarrhea, rash, hair thinning, weight gain, and more.

[Lithium: Drug Uses, Dosage and Side Effects](#)

Lithium is used to treat the manic episodes of manic depression - hyperactivity, rushed speech, poor judgment and aggression. Learn about side effects, interactions and indications.

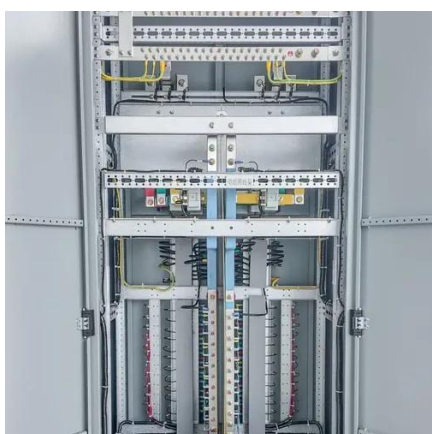


Lithium

Lithium (from Ancient Greek: lithos, líthos, 'stone') is a chemical element; it has symbol Li and atomic number 3. It is a soft, silvery-white alkali metal. Under standard conditions, it is the ...

[Lithium: MedlinePlus Drug Information](#)

Lithium is used to treat and prevent episodes of mania (frenzied, abnormally excited mood) in people with bipolar disorder (manic-depressive disorder; a disease that causes episodes of ...



[Lithium , Definition, Properties, Use, & Facts , Britannica](#)

lithium (Li), chemical element of Group 1 (Ia) in the periodic table, the alkali metal group, lightest of the solid elements. The metal itself--which is soft, white, and lustrous--and ...

Lithium

Most lithium is currently produced in Chile, from brines that yield lithium carbonate when treated with sodium carbonate. The metal is produced by the electrolysis of molten lithium chloride ...



Lithium

Learn more about Lithium uses, effectiveness, possible side effects, interactions, dosage, user ratings and products that contain Lithium.





Lithium 101

Most lithium is mined as rock minerals in Australia, while significant quantities are also produced from salars in Chile, Argentina and China. Lithium is produced from industrial ...



MEDICATION FACT SHEET Lithium

Lithium toxicity is closely related to lithium blood levels and can occur at doses close to therapeutic levels; lithium levels should be monitored closely when starting the medication or if ...

Lithium (oral route)

Lithium is used to treat mania that is part of bipolar disorder (manic-depressive illness). It is also used on a daily basis to reduce the frequency and severity of manic episodes.





Contact Us

For inquiries, pricing, or partnerships:

<https://www.sccd-sk.eu>

Phone: +32 2 808 71 94

Email: info@sccd-sk.eu

Scan QR code for WhatsApp.

