



# Lomei Battery BMS





## Lomei Battery BMS

---

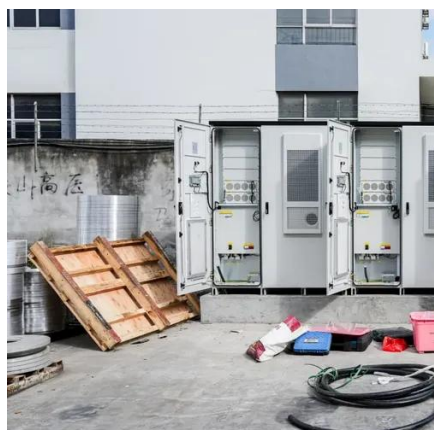


### [Understanding Battery Management Systems \(BMS\) in Lithium ...](#)

In this lesson, we're breaking down one of the most essential, but often misunderstood, components of any lithium battery setup: the Battery Management System (BMS).

### [Battery Management System \(BMS\) for Large Li ...](#)

By ensuring operation within safe limits, optimising charge and discharge processes, and maintaining cell balance, the BMS directly ...



### [Battery Management Systems \(BMS\): A Complete Guide](#)

A BMS plays a crucial role in ensuring the optimal performance, safety, and longevity of battery packs. This comprehensive guide will cover the fundamentals of BMS, its ...

### [Battery Management Systems \(BMS\) in Lithium ...](#)

A Battery Management System (BMS) is the brain and safety layer of any lithium battery pack. It monitors cells, protects against abuse, ...



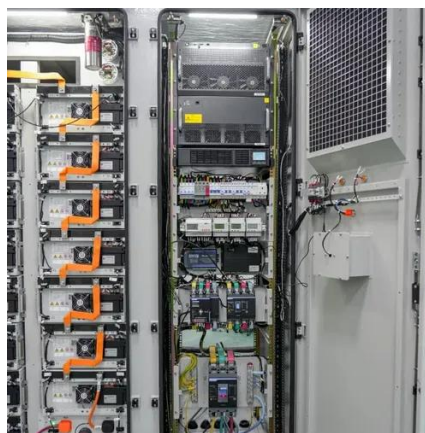
### [BMS for Lithium-Ion Batteries: The Essential Guide ...](#)

Comprehensive guide to BMS for lithium-ion batteries. Learn battery management system functions, safety features, and protection ...



### **Understanding the Role of the BMS in Modern Lithium Batteries**

The BMS tracks the voltage of each cell in the pack, ensuring they stay within safe limits. If one cell drifts too high or low, the BMS can cut off charging or discharging to protect the battery.



### [BMS for Lithium-Ion Battery: Essential Guide](#)

Discover the crucial role of a BMS for lithium-ion batteries in ensuring safety, performance, and longevity. Learn about standard vs smart BMS options.





## Battery Management System (BMS) for Large Li-ion Batteries

By ensuring operation within safe limits, optimising charge and discharge processes, and maintaining cell balance, the BMS directly contributes to the battery pack's ...



## What Is BMS on a Lithium Battery? A Complete ...

A BMS, short for Battery Management System, is an electronic control unit that monitors and manages the operation of a ...



## Top 5 Bms For Lithium Battery: Boost Performance & Safety

A Battery Management System (BMS) helps keep lithium batteries safe and healthy. It checks the battery's temperature and voltage while charging and discharging.



## **What Is BMS on a Lithium Battery? A Complete Guide to Its Role**

A BMS, short for Battery Management System, is an electronic control unit that monitors and manages the operation of a lithium battery. It ensures the battery works within ...





## [BMS for Lithium-Ion Battery: Essential Guide](#)

Discover the crucial role of a BMS for lithium-ion batteries in ensuring safety, performance, and longevity. Learn about standard vs ...

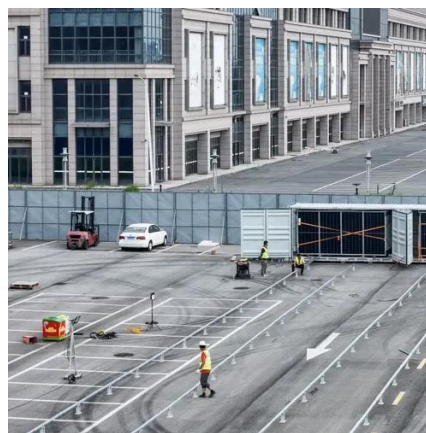


## **How Lithium-ion Battery Management Systems Enhance Battery ...**

Through its functions, including monitoring the battery's state, safeguarding it against potential harm, balancing the charge distribution among cells, and managing thermal conditions within ...

## [Battery Management Systems \(BMS\) in Lithium Batteries: ...](#)

A Battery Management System (BMS) is the brain and safety layer of any lithium battery pack. It monitors cells, protects against abuse, balances differences between cells, ...



## [Understanding Battery Management Systems ...](#)

In this lesson, we're breaking down one of the most essential, but often misunderstood, components of any lithium battery setup: the Battery ...



## **BMS for Lithium-Ion Batteries: The Essential Guide to Battery**

Comprehensive guide to BMS for lithium-ion batteries. Learn battery management system functions, safety features, and protection mechanisms in 2025.





## Contact Us

---

For inquiries, pricing, or partnerships:

<https://www.sccd-sk.eu>

Phone: +32 2 808 71 94

Email: [info@sccd-sk.eu](mailto:info@sccd-sk.eu)

Scan QR code for WhatsApp.

