



Majuro Solar System



LIQUID/AIR COOLING

PROTECTION IP54/IP55

PCS EMS

BATTERY /6000 CYCLES





Majuro Solar System



World Bank \$60m for MEC

Grid-connected solar panels adorn the roofs of classroom buildings at Marshall Islands High School as part of a World Bank-funded project to ...

Light Rail Extension , Redmond, WA

The extension of Sound Transit's light rail into Redmond will provide fast, frequent, and reliable connections around town, Bellevue, Seattle, and to the rest of the region.

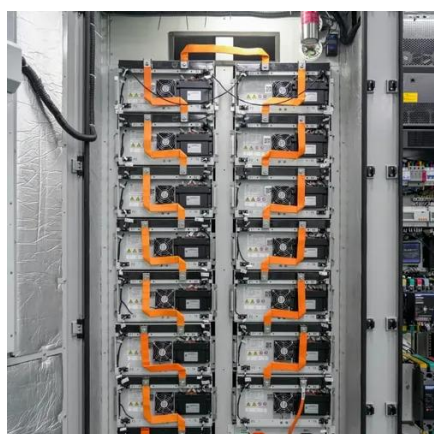


Transit

Ride the 2 Line - Your New Connection is Here!
The 2 Line has arrived, making travel easier than ever. Today, you can ride between South Bellevue and Downtown Redmond, with smooth, ...

Bellevue to Redmond

There are 4 ways to get from Bellevue to Redmond by tram, bus, taxi, or car Select an option below to see step-by-step directions and to compare ticket prices and travel times in ...



Light rail service from Bellevue to Redmond officially opens

Link 2 Line service will run through eight new stations across 6.5 miles of the Eastside, with plans to expand into Snohomish County in the fall. Beginning Saturday, the light ...

National Energy Office

This pioneering project features an off-grid solar system boasting a total capacity of 79.8 kW, making it an impressive addition to Taiwan's efforts toward sustainable development.



Marshall Islands

In August 2016, Sunergise announced the launch of an innovative solar power generation plant designed to collect BOTH rainwater and solar energy for the people of Majuro in The Republic ...





Marshalls Energy Co. to receive millions in international funding to

MEC contractors will install solar panels with a generating capacity of eight megawatts, which when combined with the four megawatts of solar systems now being ...



Majuro solar farm

Majuro solar farm is a solar photovoltaic (PV) farm in pre-construction in Majuro, Marshall Islands.

Next stop: Sound Transit East Line now links Bellevue to Redmond

Sound Transit's long-anticipated East Link debuted over the weekend, connecting Bellevue with Redmond via light rail. The train, which will eventually travel across Lake ...



All Aboard: Ride the Light Rail from Bellevue to Redmond and ...

Starting May 10, travelers can hop on the Link light rail from Downtown Bellevue and be in the heart of Redmond in under 20 minutes, no car required. Sound Transit is ...



World Bank \$60m for MEC

Grid-connected solar panels adorn the roofs of classroom buildings at Marshall Islands High School as part of a World Bank-funded project to improve Majuro's energy system.

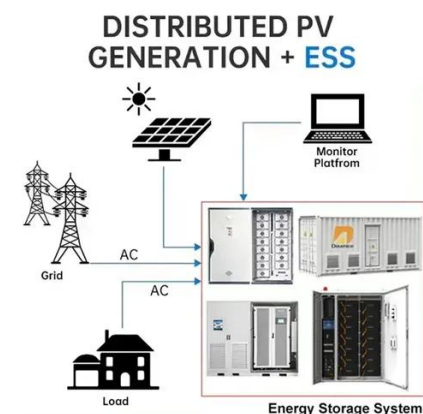


2 Line Extension to Downtown Redmond Expected to Boost Bellevue

When fully operational, the 2 Line will run every 10 minutes from 5:30 a.m. to 9:30 p.m., seven days a week, between South Bellevue and Downtown Redmond. This expansion ...

[Light rail to Downtown Redmond opens . Sound Transit](#)

Starting today, passengers in east King County will be able to take light rail between downtown Redmond and South Bellevue and easily make convenient connections to ...



[Majuro Solar System: Sustainable Energy Solutions for Island](#)

That's the reality for Majuro, the capital of the Marshall Islands. Solar energy systems aren't just an alternative here - they're becoming the lifeline for sustainable development.



RapidRide B Line

RapidRide service is actively managed by Metro to maintain even intervals between buses. Please plan accordingly. Real time arrival information is available at many stops, as well as ...



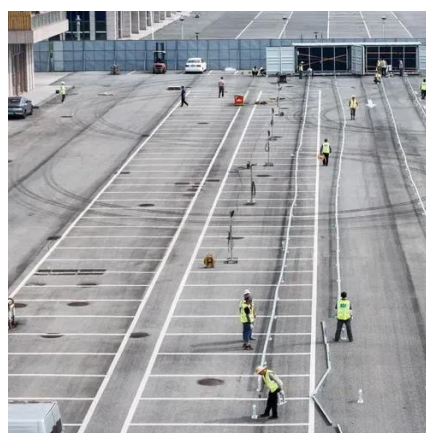
About Us : Island Eco

Our renewable energy store and project office is conveniently located at the center of Majuro, and we also have a lagoon-side facility for training outside of town in Ajeltake.



Transportation

On April 27, 2024 Sound Transit officially opened the 2Line which connects Bellevue to Redmond. Next up will be the two more stops serving Marymoor Park and Redmond Town Center.



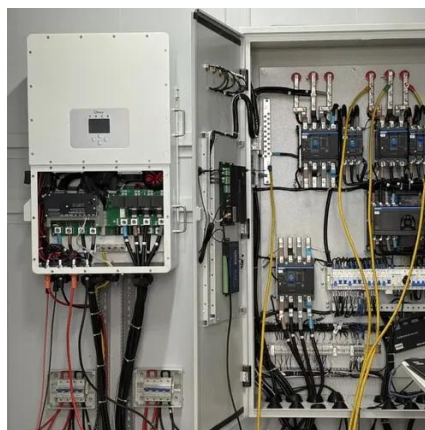
[Solar PV Analysis of Majuro, Marshall Islands](#)

Maximise annual solar PV output in Majuro, Marshall Islands, by tilting solar panels 7degrees South. Majuro, Marshall Islands is a pretty good location for year-round solar energy production.



Majuro's average solar resource (kWh/m2/day) , PCREEE

This record holds Majuro's average solar resource (kWh/m2/day). Data is extracted from Marshall Islands Renewables Readiness Assessment (RRA), and the original data source is from ...



Australia solar power majuro

In August 2016, Sunergise announced the launch of an innovative solar power generation plant designed to collect BOTH rainwater and solar energy for the people of Majuro in The Republic ...



Contact Us

For inquiries, pricing, or partnerships:

<https://www.sccd-sk.eu>

Phone: +32 2 808 71 94

Email: info@sccd-sk.eu

Scan QR code for WhatsApp.

