



Male Communication s 5g base station 125kWh





Overview

Is 5G base station power consumption accurate?

Abstract—The energy consumption of the fifth generation (5G) of mobile networks is one of the major concerns of the telecom industry. However, there is not currently an accurate and tractable approach to evaluate 5G base stations (BSs) power consumption. In this article, we pr.

How much power does a 5G BS consume?

According to data from China Mobile, the power consumption of a typical 5G macro BS exceeds 4 kW, which is approximately four times that of 4G. Considering the high deployment density of 5G BSs, the overall power consumption may reach 12 times the consumption of 4G networks [1].

Is there a power consumption model for realistic 5G AAUs?

s.VI. CONCLUSIONS In this paper, we presented a novel power consumption model for realistic 5G AAUs, which builds on large data collection campaign. At first, we proposed an ANN architecture, which allows modelling mu.

What does m mean in 5G?

where m is the power consumption of the communication equipment (i.e., AAU and BBU); M denotes the set of all 5G macro BSs in the network; and Δt is the time step of one time period and is assumed to be equal to 15 min in this study.



Male Communication s 5g base station 125kWh



Selecting the Right Supplies for Powering 5G Base Stations

Additionally, these 5G cells will also include more integrated antennas to apply the massive multiple input, multiple output (MIMO) techniques for reliable connections. As a result, a ...

How Much Power Does 5G Base Station Consume?

The average 5G base station consumes 2.5-4 kW daily - equivalent to powering 40 refrigerators simultaneously. Three factors amplify this: Operators now spend 20-40% of ...



Coordination of Macro Base Stations for 5G ...

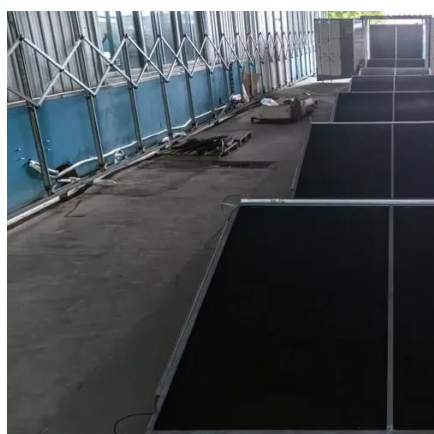
The coordination among the communication equipment and the standard equipment in 5G macro BSs is developed to reduce both the ...

Power consumption based on 5G communication

This paper proposes a power control algorithm based on energy efficiency, which combines cell breathing technology and base station sleep



technology to reduce base station energy ...



Selecting the Right Supplies for Powering 5G Base Stations

Additionally, these 5G cells will also include more integrated antennas to apply the massive multiple input, multiple output (MIMO) techniques for reliable connections. As a result, a ...

Coordination of Macro Base Stations for 5G Network with User

The coordination among the communication equipment and the standard equipment in 5G macro BSs is developed to reduce both the energy consumption and the ...



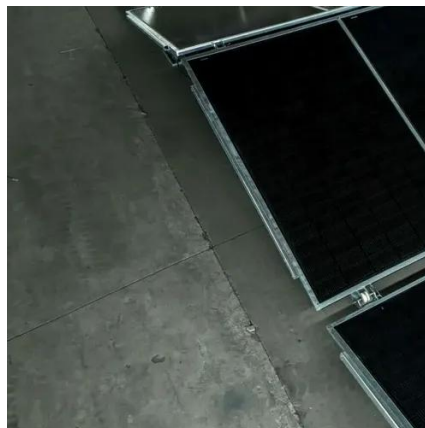
Machine Learning and Analytical Power Consumption ...

duce a new power consumption model for 5G active antenna units (AAUs), the highest power consuming component of a BS1 and in turn of a mobile network. I. particular, we present an ...



Power Consumption Modeling of 5G Multi-Carrier Base ...

We demonstrate that this model achieves good estimation performance, and it is able to capture the benefits of energy saving when dealing with the complexity of multi-carrier base stations ...



Malawi Communication Base Station 125kWh

Following approval from the Malawi Communications Regulatory Authority (MACRA), TNM confirmed that 5G base stations went live in two locations for users to test higher mobile data

Optimal energy-saving operation strategy of 5G base station with

Case studies demonstrate that the proposed model effectively integrates the characteristics of electrical components and data flow, enhancing energy efficiency while ...



Energy-efficiency schemes for base stations in 5G heterogeneous

In today's 5G era, the energy efficiency (EE) of cellular base stations is crucial for sustainable communication. Recognizing this, Mobile Network Operators are actively prioritizing EE for ...



[Complete Guide to 5G Base Station Construction](#)

Explore how 5G base stations are built--from site planning and cabinet installation to power systems and cooling solutions. Learn the ...



Complete Guide to 5G Base Station Construction , Key Steps, ...

Explore how 5G base stations are built--from site planning and cabinet installation to power systems and cooling solutions. Learn the essential components, technologies, and ...



Contact Us

For inquiries, pricing, or partnerships:

<https://www.sccd-sk.eu>

Phone: +32 2 808 71 94

Email: info@sccd-sk.eu

Scan QR code for WhatsApp.

