



Manila energy storage field is down





Overview

The temporary shutdown was scheduled to manage mechanical activities at Linsfeed Field Corp.'s LNG terminal, which is considered to be a crucial move to finish its first LNG storage tank by the end of April 2025.

The temporary shutdown was scheduled to manage mechanical activities at Linsfeed Field Corp.'s LNG terminal, which is considered to be a crucial move to finish its first LNG storage tank by the end of April 2025.

MANILA, Philippines — As the Philippine renewable energy sector gains more steam, the government may find another bottleneck in accommodating clean power sources if battery storage systems remain scarce, an industry executive said. Eric Francia, president and chief executive officer of ACEN Corp.

The Department of Energy (DOE) said Friday South Premiere Power Corp. (SPPC) and Excellent Energy Resources Inc. (EERI) will shut down a combined running capacity of 1,300 megawatts of natural gas power generation capacity from 9 a.m. on March 29 until 6:30 a.m. on March 31, 2025. The natural gas.

In a statement on Tuesday (April 16, 2024), Lotilla said the extreme heat these days has been affecting power plant operations and triggered the issuance of red and yellow alerts in the Luzon and Visayas grids. (PNA file photo by Joan Bondoc)
MANILA - The Department of Energy (DOE) said the.

SINGAPORE—The Spain-Portugal blackouts, which had been partly blamed on overreliance on solar without enough capacity backup, signal a warranted acceleration of energy storage investments for markets like the Philippines that have been betting on massive-scale renewables. In an exclusive interview.

Well, Manila's energy storage battery sector is living proof. With the Philippines targeting 35% renewable energy adoption by 2030 [1], battery systems have become the linchpin for stabilizing Manila's grid. The city's energy storage market grew 28% year-over-year in 2024, reaching \$120 million in.

y during the dry season. The Institute for Climate and Sustainable Cities (ICSC) published the Luzon Power Outlook reports in 2022 and 2023, which predicted shortfalls in the island's power supply from Apr city across the country. This year's



report spans the whole Philippines, from Luzon to.



Manila energy storage field is down



[DOE warns of major power plants shutdown](#)

The DOE said the shutdown is necessary for mechanical activities at Linseed Field Corp.'s liquefied natural gas (LNG) terminal as ...

[No energy shortfall this summer, DOE assures](#)

SPPC and Eeri underwent a planned shutdown from March 29 to 31 to pave the way for the completion of the country's first onshore ...



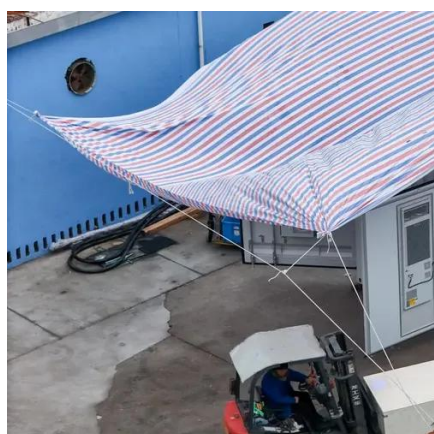
[DOE warns of major power plants shutdown](#)

The DOE said the shutdown is necessary for mechanical activities at Linseed Field Corp.'s liquefied natural gas (LNG) terminal as it advised Luzon electricity consumers to ...



Philippine Power Outlook

hydroelectric capacity. Based on this year's Grid Operating and Maintenance Program (GOMP) of the National Grid Corporation of the Philippines (NGCP), no baseload plants should undergo ...



DOE on red, yellow alerts: Extreme heat affected power plant ops

MANILA - The Department of Energy (DOE) said the "extremely high temperatures" this day affected the operations of power plants, with 31 power generation facilities going down as of ...

[DOE Urges Energy Efficiency as Major Luzon Power Plants ...](#)

The DOE said the shutdown is necessary to facilitate mechanical activities at Linseed Field Corp.'s liquefied natural gas terminal, a key step toward completing its first ...



[Energy storage needed amid renewables influx](#)

MANILA, Philippines -- As the Philippine renewable energy sector gains more steam, the government may find another bottleneck in ...





Manila's Energy Storage Battery Landscape: Current Status, ...

Manila's century-old distribution infrastructure wasn't built for bidirectional energy flow. Last March, a 20MW battery farm in Pasig City caused voltage fluctuations affecting 15,000 ...



No energy shortfall this summer, DOE assures

SPPC and Eeri underwent a planned shutdown from March 29 to 31 to pave the way for the completion of the country's first onshore liquefied natural gas (LNG) storage facility.

As LNG plants in Luzon to shut down over the weekend, DOE ...

The temporary shutdown was scheduled to manage mechanical activities at Linsfeed Field Corp.'s LNG terminal, which is considered to be a crucial move to finish its first ...



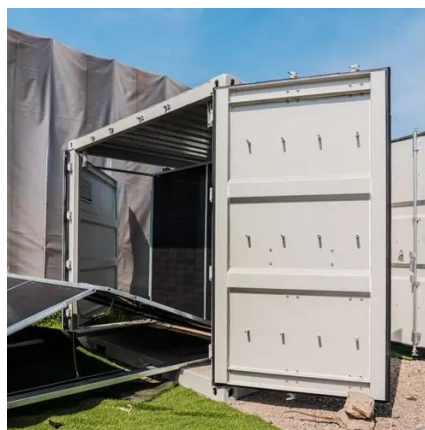
Philippine Energy Sector Responds to European Blackouts with ...

ACEN CEO emphasizes the need for accelerated energy storage investments in the Philippines following blackouts in Spain and Portugal that highlighted risks of solar overreliance.



[Energy storage needed amid renewables influx](#)

MANILA, Philippines -- As the Philippine renewable energy sector gains more steam, the government may find another bottleneck in accommodating clean power sources if ...

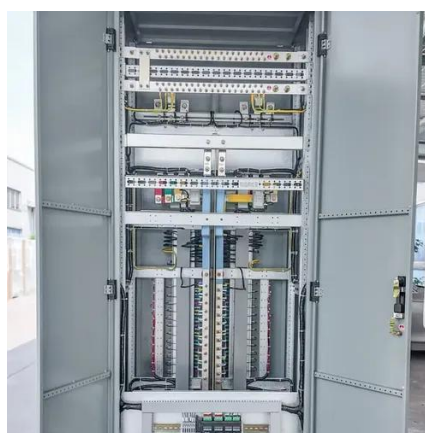


Manila Bulletin

SINGAPORE--The Spain-Portugal blackouts, which had been partly blamed on overreliance on solar without enough capacity backup, signal a warranted acceleration of ...

As LNG plants in Luzon to shut down over the weekend, DOE urges energy

The temporary shutdown was scheduled to manage mechanical activities at Linsfeed Field Corp.'s LNG terminal, which is considered to be a crucial move to finish its first ...



[DOE on red, yellow alerts: Extreme heat affected ...](#)

MANILA - The Department of Energy (DOE) said the "extremely high temperatures" this day affected the operations of power plants, with 31 ...



Contact Us

For inquiries, pricing, or partnerships:

<https://www.sccd-sk.eu>

Phone: +32 2 808 71 94

Email: info@sccd-sk.eu

Scan QR code for WhatsApp.

