



Minimum size of solar panel 430w





Overview

The exact size of a 430 watt solar panel depends on the manufacturer and the model. In general, 430 Watt solar panels have 144 half-cut solar cells with measurements similar to 72 cell solar panels. The dimensions of an average 430 Watt solar panel are about 81.9" x 40.6" x 1.38".

The exact size of a 430 watt solar panel depends on the manufacturer and the model. In general, 430 Watt solar panels have 144 half-cut solar cells with measurements similar to 72 cell solar panels. The dimensions of an average 430 Watt solar panel are about 81.9" x 40.6" x 1.38".

Typical modules measure 1.72–1.78 m in length and weigh 20–24 kg. Their flexibility makes them effective in layouts involving skylights, chimneys or other obstructions. 550W (540–560W): Common in commercial and industrial (C&I) projects. With dimensions of around 2.25–2.30 m x 1.13–1.14 m and a.

Standard Residential Panels Optimize Space and Handling: The industry-standard 60-cell panel dimensions (65" x 39" x 1.5") aren't arbitrary - they represent the optimal balance between power output, installation ease, and roof space utilization. At 40-46 pounds, they can be safely handled by.

The JUSTSOLAR JST430-455M (144) is a high-performance solar module [.] The HS144-M- [375-430W] of Hershey Power is a type of photovoltaic [.] The ESPHSC 425-450M Monocrystalline is a high-performance solar panel [.] The QS (430-450)-120HM8 MONO Half Cell Module 182 Series is a [.] RS7I-M.

The JA Solar 430W Mono Black Bifacial Solar Panel offers increased output power (430W), a reduced levelized cost of energy (LCOE), improved shading tolerance, and enhanced . Battery Bank Size (Ah) = (Solar panel total watt-hours (Wh)/solar panel voltage) x 2 (for lead-acid battery type) Now.

The exact size of a 430 watt solar panel depends on the manufacturer and the model. In general, 430 Watt solar panels have 144 half-cut solar cells with measurements similar to 72 cell solar panels. The dimensions of an average 430 Watt solar panel are about 81.9" x 40.6" x 1.38". The solar panels.

This innovative 108 half-cut cell module (410W-440W) delivers industry-leading



efficiency (up to 22.53%) and high power output for maximized returns, even with a single glass layer. Adopted by the Low LID Mono TOPCON technology, the SP440M-54H module ensures minimal power degradation (<1% year 1).



Minimum size of solar panel 430w



[Standard Solar Panel Sizes And Wattages \(100W-500W ...](#)

There are 3 standardized sizes of solar panels, namely: 60-cell solar panels size. The dimensions of 60-cell solar panels are as follows: 66 inches long, and 39 inches wide. That's basically a ...

430 Watt Solar panels for sale , Prices, dimensions, weight, ...

430 Watt Solar panels' range of prices, dimensions, sizes, voltage output, specifications datasheets Ranges of information Voltage: 26.95V ~ 182.6V Amp: 2.36A ~ 15.95A



[Solar Panel Size Guide , Best Panel Size for Your ...](#)

Learn how to choose the ideal solar panel size for your home. Get expert tips, standard dimensions, and a size chart to simplify your ...



[Mission Solar 430W MSE430SX9Z 72-Cell MSE PERC Solar Panel](#)

Get the most out of your solar power system with the Mission Solar 430W MSE430SX9Z 72-Cell PERC Solar Panel. This high-quality solar panel is



designed to provide maximum efficiency ...



[Topcon All Black 430W/435W/440W Solar Panels ...](#)

Sunpal manufactures the N-type TOPCon monofacial full black 430W 435W 440W solar panels. The size of 1722*1134*30mm is ideal for rooftop ...



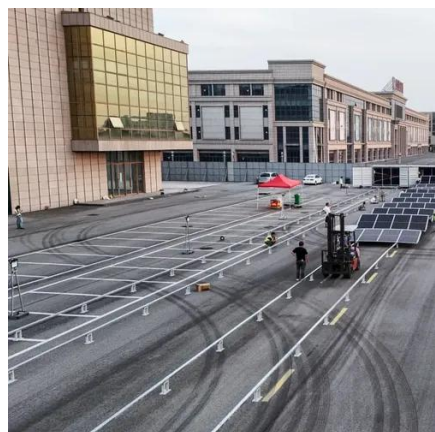
[Solar Panel Size and Wattage Guide: What Works ...](#)

High-quality residential solar installations in the US typically utilize solar panels rated between 250W and 430W. As solar panels get ...



[Standard Solar Panel Sizes And Wattages \(100W ...](#)

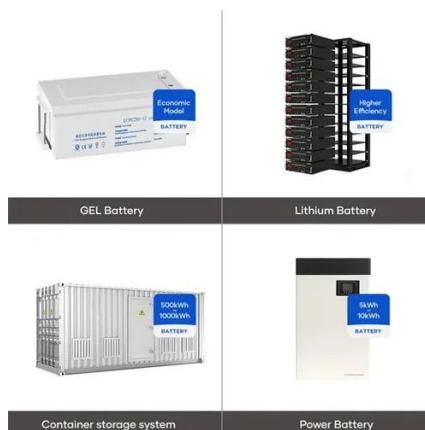
There are 3 standardized sizes of solar panels, namely: 60-cell solar panels size. The dimensions of 60-cell solar panels are as follows: 66 inches ...





Solar Panel Dimensions: Specifications, Power Classes, Roof ...

Analysis of solar panel dimensions and power classes, with reference sizes for 430W/550W/600W modules and corresponding roof area calculations to help select the most ...



Topcon All Black 430W/435W/440W Solar Panels For Home

Sunpal manufactures the N-type TOPCon monofacial full black 430W 435W 440W solar panels. The size of 1722*1134*30mm is ideal for rooftop installations.

Mission Solar 430W MSE430SX9Z 72-Cell MSE ...

Get the most out of your solar power system with the Mission Solar 430W MSE430SX9Z 72-Cell PERC Solar Panel. This high-quality solar panel is ...



430w solar panel for sale , Buy online for home, boat and RV

How many 430 Watt solar panels do I need? A 430W solar panel has a 430 watt rated power output. However, the actual power output will depend on many factors, such as ...



[Solar Panel Size & Dimensions Guide 2025](#) [. Complete Specs](#)

In this comprehensive guide, you'll learn everything you need to know about solar panel sizing, from standard dimensions to weight considerations, helping you determine the ...



430W photovoltaic panel size

The JA Solar 430W Mono Black Bifacial Solar Panel offers increased output power (430W), a reduced levelized cost of energy (LCOE), improved shading tolerance, and enhanced

[Solar Panel Size Guide , Best Panel Size for Your Roof](#)

Learn how to choose the ideal solar panel size for your home. Get expert tips, standard dimensions, and a size chart to simplify your solar decisions.



[Solar Panel Size and Wattage Guide: What Works Best for ...](#)

High-quality residential solar installations in the US typically utilize solar panels rated between 250W and 430W. As solar panels get more efficient and produce more ...



Contact Us

For inquiries, pricing, or partnerships:

<https://www.sccd-sk.eu>

Phone: +32 2 808 71 94

Email: info@sccd-sk.eu

Scan QR code for WhatsApp.

