



Namibia polycrystalline solar module glass





Namibia polycrystalline solar module glass

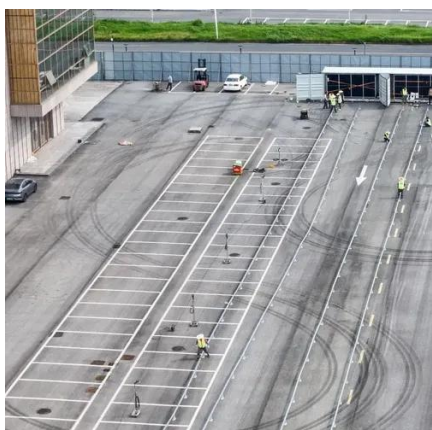


A guide to Namibia

Namibia is a mashup of abundant wildlife, impeccably wild landscape and cultural riches. This guide promises a perfectly planned visit.

Namibia

Namibia gained independence from South Africa in March 1990, following the South African Border War. However, Walvis Bay and the Penguin Islands remained under South African ...



Namibia

Visit the Definitions and Notes page to view a description of each topic.

Namibia , Currency, Population, Capital, Map, Size, Language,

After 106 years of German and South African rule, Namibia became independent on March 21, 1990, under a democratic multiparty constitution. The



capital of the country is ...

DETAILS AND PACKAGING



- 1 USER MANUAL PDF
- 2 RJ45 Cable For RS485/CAN
- 3 Battery in Parallel Cables
- 4 RJ45 TO USB Monitor Cable
- 5 M8 Terminal*4

PUSUNG-R (Fit for 19 inch cabinet)



Namibia , Culture, Facts & Travel ,

Namibia is an arid country covering more than 320,000 square miles. The Caprivi Strip juts out to the northeast to touch both Zimbabwe and Zambia. Namibia has four distinct ...

All About Namibia

Namibia is in southern Africa and borders the Atlantic Ocean to west, Angola and Zambia to the north, Botswana to the east, and South Africa to the south and east. Namibia ...



ABOUT NAMIBIA

After democratic elections were held in 1989, Namibia became an independent state on March 21, 1990. To date, Namibia boasts a proud record of uninterrupted peace and ...





[Namibia - Travel guide at Wikivoyage](#)

Namibia, in Southern Africa, boasts remarkable natural attractions such as the Namib Desert, the Fish River Canyon Park, Etosha National Park and the Kalahari Desert.



Namibia

Namibia, officially the Republic of Namibia, is a country in Southern Africa. Its borders include the Atlantic Ocean to the west, Angola and Zambia to the north

Namibia

Only on 21 March 1990, Namibia gained independence from South Africa. The country's name is derived from the Namib Desert. With an area of 824,292 km² (318,260 sq. mi.), Namibia is 1.5 ...





Contact Us

For inquiries, pricing, or partnerships:

<https://www.sccd-sk.eu>

Phone: +32 2 808 71 94

Email: info@sccd-sk.eu

Scan QR code for WhatsApp.

