



Nassau Super Double Layer Capacitor Plant





Overview

An Electrochemical Double Layer Capacitor (EDLC) System is an energy storage system based on electrostatic effects that occur between two carbon. Moreover, the plant produces dispatchable electricity according to the market requirements, thus balancing the intermittent.

An Electrochemical Double Layer Capacitor (EDLC) System is an energy storage system based on electrostatic effects that occur between two carbon. Moreover, the plant produces dispatchable electricity according to the market requirements, thus balancing the intermittent.

These massive machine-type communications (mMTC) are defined by their low throughput and small payload wireless connectivity to accomplish high power-, size-, and cost-constrained sensor nodes. All of these devices inevitably come with the need for small form factor energy storage to meet the.

An Electrochemical Double Layer Capacitor (EDLC) System is an energy storage system based on electrostatic effects that occur between two carbon. Moreover, the plant produces dispatchable electricity according to the market requirements, thus balancing the intermittent volatile feed-in of renewable.

The objective of SI 2030 is to develop specific and quantifiable research, development, and deployment (RD&D) pathways to achieve the targets identified in the Long-Duration Storage Shot, which seeks to achieve 90% cost reductions for technologies that can provide 10 hours or longer of energy.

Supercapacitors also known ultracapacitors and electric double layer capacitors (EDLC) are capacitors with capacitance values greater than any other capacitor type available today. Supercapacitors are breakthrough energy storage and delivery devices that offer millions of times more capacitance.

In the field of “Supercapacitors”, we are researching the characterization of battery materials and optimization methods with regard to electrode and battery cell production. Electric double-layer capacitors (EDLCs) are devices based on Carbon/Carbon-based electrodes and have the characteristics of.

What is a supercapacitor?



Supercapacitors, also called ultra capacitors or double layer capacitors, are specially designed capacitors that possess very large values of capacitance—as high as 12,000 F. They can be recharged very quickly and are used primarily for energy storage. Supercapacitor.



Nassau Super Double Layer Capacitor Plant



Supercapacitors

Supercapacitors use two layers of solid dielectrics to store energy. These are called electrochemical double layer capacitors. The supercapacitors use two mechanisms to store ...

Electric Double Layer Capacitor

Electric double layer capacitors (EDLCs), also known as super-capacitors, are energy storage devices primarily used to support power supplies in managing surge power demands, ...



[Nassau Super Double Layer Capacitor Plant](#)

There are two main types: electrical double-layer capacitors that store energy via electrostatic double layers, and electrochemical double-layer capacitors that involve Faradaic ...

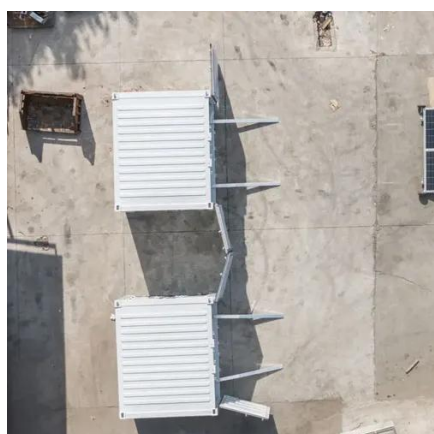
Supercapacitors

Electric double-layer capacitors (EDLCs) are devices based on Carbon/Carbon-based electrodes and have the characteristics of being charged and discharged very fast (within seconds) and ...



The engineer's guide to supercapacitors

Supercapacitors combine the electrostatic principles associated with capacitors and the electrochemical nature of batteries. ...



The construction and applications of supercapacitors

When a voltage is applied to the capacitor terminals, a diffuse layer forms between the OHP and the bulk of the EDLC. This, in turn, forms another double-layer, where the OHP at the opposite ...

ESS



Supercapacitor Technical Guide

Supercapacitors are breakthrough energy storage and delivery devices that offer millions of times more capacitance than traditional capacitors. They deliver rapid, reliable ...



Electric Double Layer Capacitors (EDLC): High-Power Energy ...

An electric double layer capacitor is a charge storage device which offers higher capacitance and higher energy density than an electrolytic capacitor. Electric double layer capacitors are ...

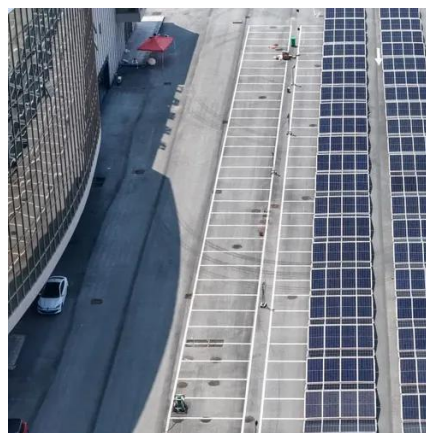


The engineer's guide to supercapacitors

Supercapacitors combine the electrostatic principles associated with capacitors and the electrochemical nature of batteries. Consequently, supercapacitors use two ...

Supercapacitors

Electric double-layer capacitors (EDLCs) are devices based on Carbon/Carbon-based electrodes and have the characteristics of being ...



Microsoft Word

Feature high capacitance value (Farad) for energy storage, voltage hold-up and battery back-up applications. Double layer capacitors bridge the gap (see graph below) between conventional ...



Technology Strategy Assessment

Supercapacitors do not require a solid dielectric layer between the two electrodes, instead they store energy by accumulating electric charge on porous electrodes filled with an electrolyte ...





Contact Us

For inquiries, pricing, or partnerships:

<https://www.sccd-sk.eu>

Phone: +32 2 808 71 94

Email: info@sccd-sk.eu

Scan QR code for WhatsApp.

