



New Energy Liquid Flow Energy Storage





New Energy Liquid Flow Energy Storage



CSS

This is to show new line and return carriage in HTML. Then you don't need to do it explicitly. You can do it in CSS by setting the white-space attribute pre-line value.

[Change the default terminal in Visual Studio Code](#)

I am using Visual Studio Code on my Windows 10 PC. I want to change my default terminal from Windows PowerShell to Bash on Ubuntu (on Windows). How can I do that?



[Difference between 'new operator' and 'operator new'?](#)

A new expression is the whole phrase that begins with new. So what do you call just the "new" part of it? If it's wrong to call that the new operator, then we should not call ...

url

I was searching on this link before finding this answer. I did not find the solution in the link because I was looking for "newline" or "new line" instead of "line feed".



TAX FREE

1-3MWh

BESS



How do I create a folder in a GitHub repository?

1 To add a new directory all you have to do is create a new folder in your local repository. Create a new folder, and add a file in it. Now go to your terminal and add it like you add the normal ...

What is the 'new' keyword in JavaScript?

The new keyword in JavaScript can be quite confusing when it is first encountered, as people tend to think that JavaScript is not an object-oriented programming language. What is it? What ...



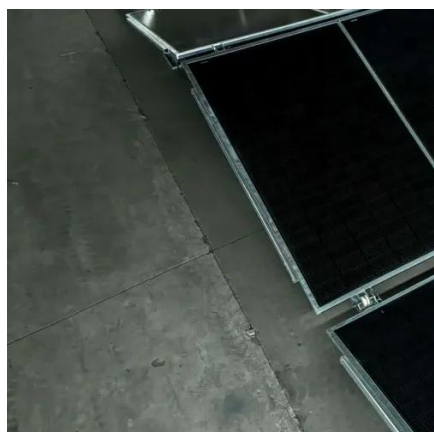
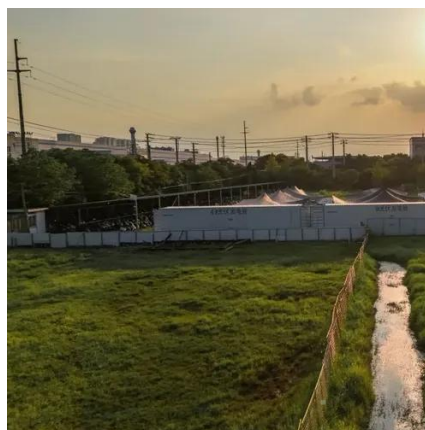
Its Confirmed

Edited November 5, 2024 by Tony Wyp 5 NYMXer changed the title to Its Confirmed - new DRZ4S for 2025 with FI William1 locked this topic Prev 1 2 3 4 5 6 Next Page 1 of 22



html

0 The target attribute of a link forces the browser to open the destination page in a new browser window. Using _blank as a target value will spawn a new window every time ...



JavaScript New Date ()

new Date() new Date(milliseconds) new Date(dateString) new Date(year, month, day [, hour, minute, second, millisecond]) This means that in your constructor, when you pass ...

[Refresh powerBI data with additional column](#)

I have built a powerBI dashboard with data source from Datalake Gen2. I am trying to add new column into my original data source. How to refresh from PowerBI side without ...





Contact Us

For inquiries, pricing, or partnerships:

<https://www.sccd-sk.eu>

Phone: +32 2 808 71 94

Email: info@sccd-sk.eu

Scan QR code for WhatsApp.

