



Number of cells in a solar panel





Overview

How many cells are in a residential solar panel?

Residential solar panels typically contain 60 or 72 photovoltaic (PV) cells, though some smaller panels may have as few as 48 cells. The number of cells in a residential panel is primarily determined by the desired power output and the physical size constraints for rooftop installations.

How many solar cells are on a commercial solar panel?

Commercial solar panels have an average of 72 solar cells. The number of solar cells on a solar panel is directly related to the panel's size.

How many cells are in a 60 cell solar panel?

For example, a typical 60-cell residential solar panel may have three strings of 20 cells each, connected in parallel. To enhance the panel's performance and reliability, bypass diodes are often incorporated into the design.

How many Watts Does a solar panel produce?

Residential solar panels typically range from 60 to 72 cells, providing power outputs between 250 and 400 watts. Commercial and utility-scale installations often employ larger panels with 96 or more cells to achieve higher power outputs, sometimes exceeding 500 watts per panel.



Number of cells in a solar panel



How Many Solar Cells Are in a Typical Panel?

Residential solar panels typically contain 60 or 72 photovoltaic (PV) cells, though some smaller panels may have as few as 48 cells. The number of cells in a residential panel is ...

How Many Solar Cells Are in a Solar Panel?

How Many Solar Cells Are in a Solar Panel? There are 60 to 70 solar cells are in 300 to 400 watt photovoltaic panels.



Does a Solar Panel Have Cells? The Hidden Structure of Solar Panels

How Many Solar Cells Are in a Solar Panel? The number of cells in a solar panel varies based on the panel's intended use. For residential rooftops, 60-cell panels are common, ...

How Many Pv Cells In A Solar Panel?

The typical number of solar cells in a standard residential or commercial solar panel ranges from 60 to 72 cells. However, this can vary depending on the size and power output of ...

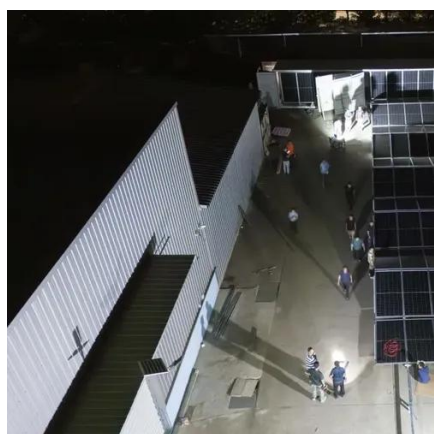


[Discover How Many Solar Cells Are in a Solar Panel](#)

The number of solar cells in a panel typically ranges from 60 to 72, depending on the panel's design and application. Solar cells convert sunlight into electricity through a ...

[How Many PV Cells in a Solar Panel Explained](#)

The number of photovoltaic (PV) cells in a solar panel mainly depends on the desired power output, panel design, and the efficiency of ...



[How many solar cells are there in one, NenPower](#)

The most common configuration of residential solar panels features 60 cells; however, commercial-grade panels often contain 72 ...



[How many solar cells are there in one , NenPower](#)

The most common configuration of residential solar panels features 60 cells; however, commercial-grade panels often contain 72 cells. Several factors influence the cell ...



 LFP 48V 100Ah

[How the Number of Cells in Solar Panels Affects Efficiency](#)

Knowing the count of cells in a solar panel, how they fit together, and why various panels show different counts of cells is key for anyone thinking about solar energy, whether for ...



[How Many PV Cells in a Solar Panel Explained](#)

The number of photovoltaic (PV) cells in a solar panel mainly depends on the desired power output, panel design, and the efficiency of the cells used. Residential solar ...



How Many Pv Cells Are In A Solar Panel

The number of PV cells in a solar panel can vary depending on the size and efficiency of the panel. In the UK, the adoption of solar panels has been steadily increasing as ...



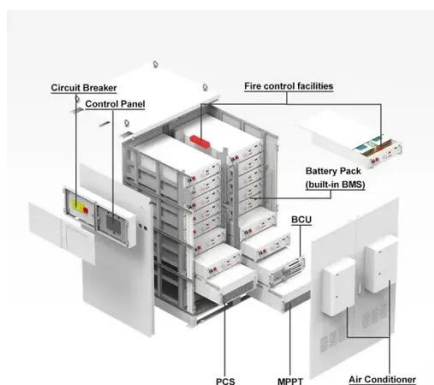
How Many Solar Cells Are in a Solar Panel? , Photovoltaic Cell

How Many Solar Cells Are in a Solar Panel? There are 60 to 70 solar cells are in 300 to 400 watt photovoltaic panels.

How Many Solar Cells in a Solar Panel: A

...

The number of solar cells in a solar panel plays a crucial role in determining its size, efficiency, and power output. Whether you're using ...



How Many Solar Cells in a Solar Panel: A Complete Guide

The number of solar cells in a solar panel plays a crucial role in determining its size, efficiency, and power output. Whether you're using a standard 60-cell panel for ...



Contact Us

For inquiries, pricing, or partnerships:

<https://www.sccd-sk.eu>

Phone: +32 2 808 71 94

Email: info@sccd-sk.eu

Scan QR code for WhatsApp.

