



Outdoor energy storage cooling duct design





Overview

Air duct design refers to how airflow is organized inside an energy storage cabinet to control the temperature of lithium iron phosphate (LFP) battery modules. In an air-cooled system, the design ensures steady airflow across batteries, avoiding overheating and.

Air duct design refers to how airflow is organized inside an energy storage cabinet to control the temperature of lithium iron phosphate (LFP) battery modules. In an air-cooled system, the design ensures steady airflow across batteries, avoiding overheating and.

Good design requires addressing and balancing a variety of competing goals. In addition to improving the built environment through its technical standards and guidelines, ASHRAE also offers specialized design guides as readable, relatable and easy to implement companion texts for a variety of.

What is Air Duct Design in Air-Cooled ESS?

Air duct design in air-cooled energy storage systems (ESS) refers to the engineering layout of internal ventilation pathways that guide airflow for optimal thermal management of battery modules. This design is critical in maintaining safe operating.

The main point of the design of forced air-cooling technology is to control the air duct to change the wind speed: due to the different energy density and capacity of the batteries in the energy storage system, the battery placement and arrangement structure are different, so the air duct inside.

increase its cooling efficiency in Fig. 7. The coolant in the bottom reservoir was driven by the capillary forces to climb along the microfibre channels, which could absorb the heat from the bat ipment, prefabricated cabin and power room. It is used to provide a suitable temperature environment.

Among various thermal strategies, air duct design in air-cooled ESS is a cost-effective and proven approach. At Dagong ESS, we've optimized this design to bring superior stability, easy maintenance, and long-term value to clients worldwide. What Is Air Duct Design in ESS?

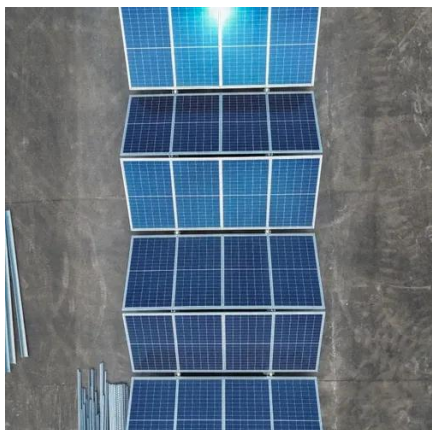


Air duct design refers to.

Thermal Energy Storage (TES) for space cooling, also known as cool storage, chill storage, or cool thermal storage, is a cost saving technique for allowing energy-intensive, electrically driven cooling equipment to be predominantly operated during off-peak hours when electricity rates are lower.



Outdoor energy storage cooling duct design

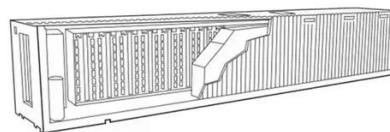


[Energy storage cooling air duct guide plate](#)

Differently from the design of the air supply flow field of most BESSs in previous studies, this study proposes a novel combined the cooling air duct and the battery pack

Outdoor Design Conditions

This data is used when calculating the building component heating load and component cooling load, which in turn are used to determine the required cubic feet per ...



ASHRAE Design Guides

ASHRAE Design Guide for Dedicated Outdoor Air Systems offers comprehensive guidance from industry experts to simplify DOAS design, installation, operation, and management.



Why Air Duct Design Matters in Air-Cooled Energy Storage ...

Air duct design refers to how airflow is organized inside an energy storage cabinet to control the temperature of lithium iron phosphate (LFP)



battery modules. In an air-cooled system, the ...



Understanding the Air Duct Design in Air-Cooled Energy Storage ...

Air duct design in air-cooled energy storage systems (ESS) refers to the engineering layout of internal ventilation pathways that guide airflow for optimal thermal management of battery ...

[A Technical Introduction to Cool Thermal Energy Storage ...](#)

There are any number of control strategies that can be utilized to take advantage of the benefit of Cool Storage, however, there are two basic approaches that define the common limits of the ...



Forced air-cooling technology is mature, and air duct design is ...

At present, energy storage systems mostly adopt the thermal management scheme of air conditioning + cooling duct air supply. The air duct is mainly divided into serial ...



Air Conditioning with Thermal Energy Storage

Thermal Energy Storage (TES) for space cooling, also known as cool storage, chill storage, or cool thermal storage, is a cost saving technique for allowing energy-intensive, electrically ...



Design and optimization of the cooling duct system for the

This study takes a certain type of container energy storage system as the research object. A personalized uniform air supply scheme in the form of "main duct + riser" is proposed for the ...



Don't Bury the Risk: Smarter Duct Bank Design for Solar + Storage ...

We run detailed duct bank studies that ensure your underground cable systems are engineered for real world thermal loads, code compliance and construction success.





12.8V6Ah

Nominal voltage (V):12.8
 Nominal capacity (ah):6
 Rated energy (WH):76.8
 Maximum charging voltage (V):14.6
 Maximum charging current (a):6
 Floating charge voltage (V):13.6-13.8
 Maximum continuous discharge current (a):10
 Maximum peak discharge current @10 seconds (a):20
 Maximum load power (W):100
 Discharge cut-off voltage (V):10.8
 Charging temperature (°C):0-+50
 Discharge temperature (°C):-20-+60
 Working humidity: <95% R.H (non condensing)
 Number of cycles (25 °C, 0.5c, 100%doD): >2000
 Cell combination mode: 32700-4/1p
 Terminal specification: T2 (6.3mm)
 Protection grade: IP65
 Overall dimension (mm):50*70*107mm
 Reference weight (kg):0.7
 Certification: un38.3/msds



Contact Us

For inquiries, pricing, or partnerships:

<https://www.sccd-sk.eu>

Phone: +32 2 808 71 94

Email: info@sccd-sk.eu

Scan QR code for WhatsApp.

