



Power attenuation rate of solar panels in winter





Overview

Solar panels generally operate at about 70% to 80% of their peak efficiency in winter. Low temperatures improve panel performance by reducing electrical resistance, often increasing efficiency by roughly 5% for every 18°F (10°C) drop, as long as the panels receive unobstructed.

Solar panels generally operate at about 70% to 80% of their peak efficiency in winter. Low temperatures improve panel performance by reducing electrical resistance, often increasing efficiency by roughly 5% for every 18°F (10°C) drop, as long as the panels receive unobstructed.

Solar panel efficiency changes throughout the year but remains impressive even in winter. Understanding how solar panels work and the factors that affect their efficiency helps explain their performance during colder months. Solar panels convert sunlight into electricity using photovoltaic cells.

Your solar system won't shut down during the winter months but it's important to understand how seasonal changes affect its performance. From snow coverage to the sun's lower position in the sky several factors influence how much energy you'll generate during the colder season - and there are.

Solar panels work well in the winter as long as they don't stay covered in snow. Solar panels are more efficient in colder weather than hot. Snow typically melts or slides off of panels, as they are installed at an angle. Do solar panels work in the winter?

It's a common myth that solar panels.

However, a common misconception about solar energy is that it cannot be utilized during the winter months. In fact, electricity production is possible even in cold, cloudy, or snowy weather. In this respect, solar energy stands as one of the key solutions for a sustainable future. Solar panels can.

Solar panels can be effective in winter, capturing approximately 70-80% of their rated output even in snowy conditions due to their design and the reflective properties of snow. The article supports this by explaining that while snow can temporarily hinder performance, factors such as panel angle.



For homeowners considering solar energy, winter often raises a common question: Will my solar panels still produce enough power during the colder months?

The short answer is yes—but understanding how solar panels perform in winter conditions requires a closer look and efficiency can be impacted by.



Power attenuation rate of solar panels in winter



[8 Solar Panel Performance During Winter Months ...](#)

Discover how solar panels actually perform better in cold temperatures, plus expert tips for maximizing winter energy production and handling snow ...

[Do solar panels work in snow and during winter?](#)

It's a common myth that solar panels don't work during winter. Interestingly, cold temperatures typically improve solar panel output, which means your panels will produce more ...



[Understanding Winter Solar: Performance Myths Debunked](#)

Solar panels absolutely do work in winter--and sometimes, they work even better than you'd expect. While output may be lower due to shorter days and cloudy skies, your ...

What Is the Efficiency of Solar Panels in Winter? Key Facts and ...

Solar panels generally operate at about 70% to 80% of their peak efficiency in winter. Low temperatures improve panel performance by



reducing electrical resistance, often increasing ...



[Performance of Solar Panels in Winter Months: Facts and ...](#)

Solar panels can generate electricity even in snowy and cloudy weather because they require photons from sunlight, not temperature, to produce electricity. Although the ...

[Do Solar Panels Work in Winter? What You Need to Know](#)

With winter comes colder temperatures, shorter days, and the belief that both factors negatively impact solar panel efficiency. This is a misconception. Even in the dreary ...



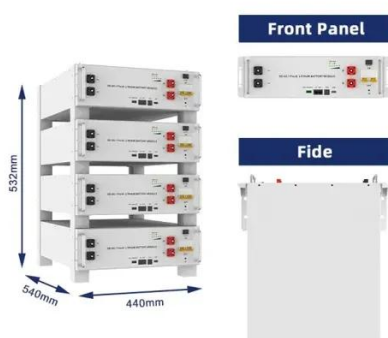
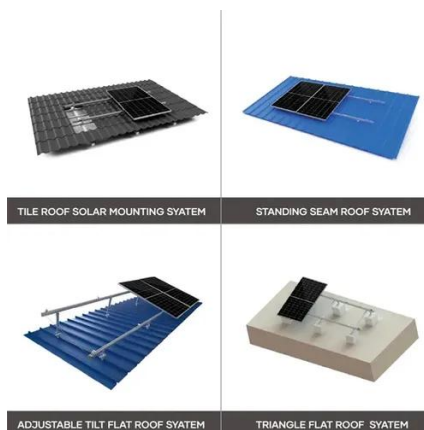
What Really Happens to Solar Panels' Productivity in Winter?

In reality, solar panels rely on sunlight--not warmth--to produce energy. In fact, solar panels will often work even more efficiently in colder temperatures because excessive ...



Do solar panels work in snow and during winter?

It's a common myth that solar panels don't work during ...



Do Solar Panels Work in Winter? What You Need ...

With winter comes colder temperatures, shorter days, and the belief that both factors negatively impact solar panel efficiency. This is a ...

Power attenuation rate of photovoltaic panels in winter

In the field of renewable energy, solar energy plays a major role in power generation. This study also focuses on the parameters of the PV panel which affect the



Are Solar Panels Effective in Winter? A ...

Solar panels can be effective in winter, capturing approximately 70-80% of their rated output even in snowy conditions due ...



[Are Solar Panels Effective in Winter? A Comparison of ...](#)

Solar panels can be effective in winter, capturing approximately 70-80% of their rated output even in snowy conditions due to their design and the reflective properties of snow.

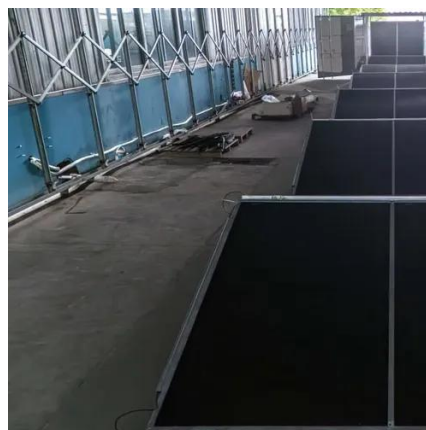


[Maximize Solar Panel Efficiency in Winter: Essential Tips](#)

Winter can reduce the number of sunny hours in a day, but with the right approach, your solar panels can still produce a reliable amount of energy. Maximizing your solar system's output ...

8 Solar Panel Performance During Winter Months That Maximize Power

Discover how solar panels actually perform better in cold temperatures, plus expert tips for maximizing winter energy production and handling snow coverage to ensure optimal solar ...



[What Is the Efficiency of Solar Panels in Winter?](#)

Solar panels generally operate at about 70% to 80% of their peak efficiency in winter. Low temperatures improve panel performance by reducing ...



Performance of Solar Panels in Winter Months: ...

Solar panels can generate electricity even in snowy and cloudy weather because they require photons from sunlight, not ...





Contact Us

For inquiries, pricing, or partnerships:

<https://www.sccd-sk.eu>

Phone: +32 2 808 71 94

Email: info@sccd-sk.eu

Scan QR code for WhatsApp.

