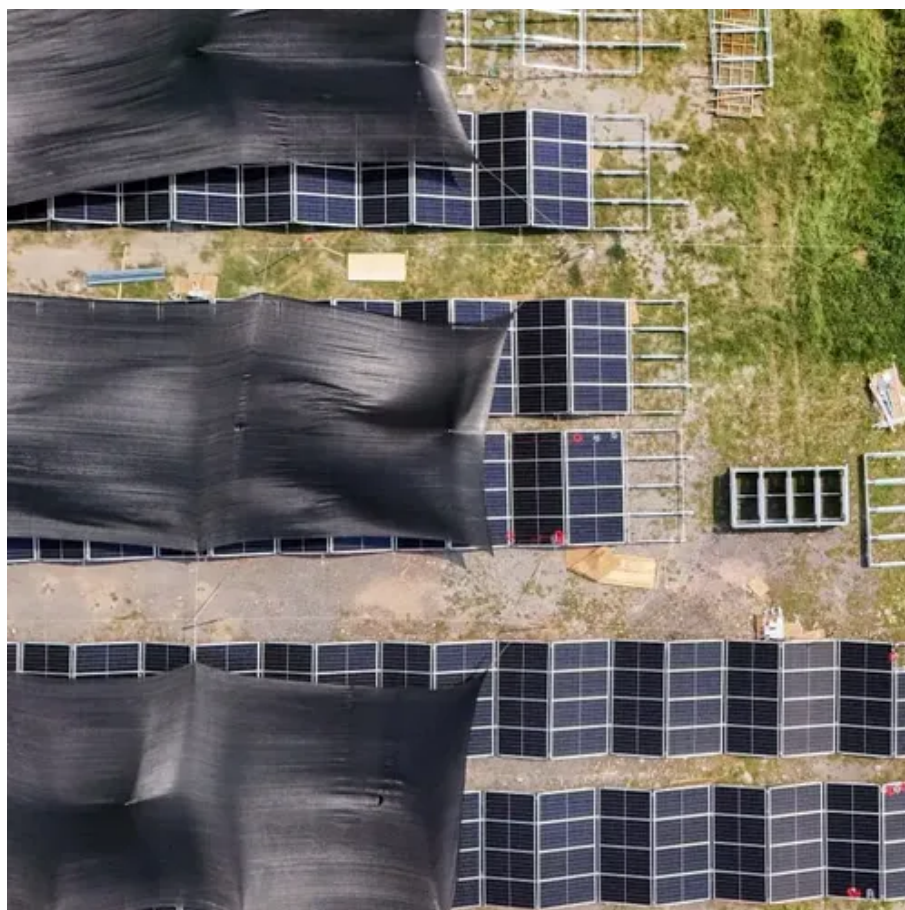




# Power consumption of Huawei 5G base stations





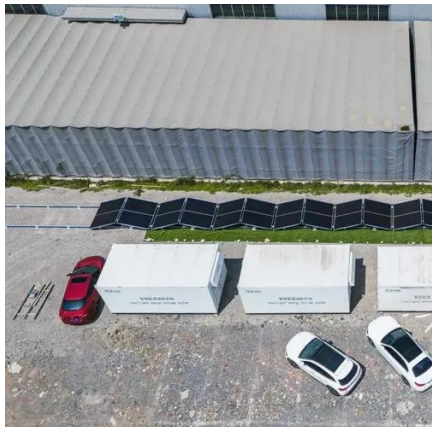
## Overview

---

In the 5G era, the maximum energy consumption of a 64T64R active antenna unit (AAU) will be an estimated 1 to 1.4 kW to 2 kW for a baseband unit (BBU). Base stations with multiple frequencies will be a t.



## Power consumption of Huawei 5G base stations



### 5G Power: Creating a green grid that slashes costs, emissions

In the 5G era, the maximum energy consumption of a 64T64R active antenna unit (AAU) will be an estimated 1 to 1.4 kW to 2 kW for a baseband unit (BBU). Base stations with multiple ...

### How energy-efficient are Huawei's 5G base stations compared to ...

Power Consumption: Huawei's 5G base stations have significantly lower power consumption compared to their 4G counterparts. This is achieved through advanced power management ...



### [Machine Learning and Analytical Power Consumption ...](#)

esan@huawei Abstract--The energy consumption of the fifth generation (5G) of mobile networks is one of the major concerns of the telecom industry. However, there is not currently ...

### [Modelling the 5G Energy Consumption using Real-world ...](#)

To address this, we propose a novel deep learning model for 5G base station energy consumption estimation based on a real-world dataset. Unlike



existing methods, our approach integrates ...



## Powering 5G

This figure is for one amplifier, and in a typical 5G base station site, according to Huawei, the total power consumption can be over 11.5kW including legacy 2/3/4G radios and ...

## Comparison of Power Consumption Models for 5G Cellular ...

Power consumption models for base stations are briefly discussed as part of the development of a model for life cycle assessment. An overview of relevant base station power ...



## Why does 5g base station consume so much power and how to ...

Huawei and ZTE's 5G base stations have a 100% load power consumption of 3852.5W and 3674.85W, respectively, while ZTE's 4G base station has a power consumption ...





## Huawei's world's first 5G-A smart base station technology ...

Intelligent energy consumption regulation: AI dynamically adjusts the base station power according to the density of people and business load, such as automatically switching to low ...

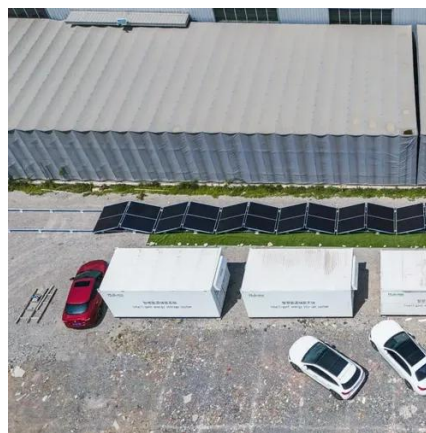


## Front Line Data Study about 5G Power Consumption

The two figures above show the actual power consumption test results of 5G base stations from different manufacturers, ZTE and HUAWEI, in Guangzhou and Shenzhen, by an anonymous ...

## Comparison of Power Consumption Models for 5G Cellular Network Base

Power consumption models for base stations are briefly discussed as part of the development of a model for life cycle assessment. An overview of relevant base station power ...



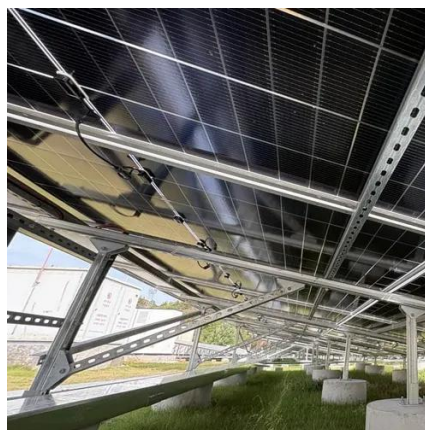
## Powering 5G

This figure is for one amplifier, and in a typical 5G base station site, according to Huawei, the total power consumption can be over ...



## Why does 5g base station consume so much ...

Huawei and ZTE's 5G base stations have a 100% load power consumption of 3852.5W and 3674.85W, respectively, while ZTE's 4G ...



## How Much Power Does 5G Base Station Consume?

Have you ever wondered how much energy our hyper-connected world is consuming? 5G base stations, the backbone of next-gen connectivity, now draw 3-4 times ...



## Contact Us

---

For inquiries, pricing, or partnerships:

<https://www.sccd-sk.eu>

Phone: +32 2 808 71 94

Email: [info@sccd-sk.eu](mailto:info@sccd-sk.eu)

Scan QR code for WhatsApp.

