



Power is reduced when the battery cabinet is low





Overview

A voltage drop, often caused by aging batteries, parasitic drains, or environmental factors, can affect battery-operated systems, but implementing an Electric Power Management (EPM) system that monitors and adjusts voltage based on battery conditions can help maintain optimal.

A voltage drop, often caused by aging batteries, parasitic drains, or environmental factors, can affect battery-operated systems, but implementing an Electric Power Management (EPM) system that monitors and adjusts voltage based on battery conditions can help maintain optimal.

A low battery warning is a frequent sign seen on almost all electronic devices, electric vehicles, and grid connected energy storage systems. It indicates that there is not enough energy left to continue to operate correctly. This parameter is particularly crucial in modern applications, including.

The “Engine Power Reduced” message, frequently referred to as “limp mode,” is a protective response initiated by the Powertrain Control Module (PCM) to prevent damage to the engine or transmission. This system fault detection immediately limits acceleration, speed, and sometimes transmission.

A voltage drop, often caused by aging batteries, parasitic drains, or environmental factors, can affect battery-operated systems, but implementing an Electric Power Management (EPM) system that monitors and adjusts voltage based on battery conditions can help maintain optimal performance and extend.

Reduced cranking power can indicate that battery failure is imminent. However, it can also simply be your car complaining about the cold. In this blog post, we’ll cover what cranking power is, how it connects to your vehicle’s electrical system, and more. Before we dig into cranking power and.

When you see alerts like “battery low,” “low battery,” or “battery voltage low,” it typically indicates that your device’s power is running out. This could be due to various factors, including battery wear, usage patterns, or technical issues with the device. Rechargeable vs. Non-Rechargeable.

When a battery is dead or its energy level is low, it means that the charge stored



within it has been depleted to the point where it can no longer provide adequate power. In other words, the battery has reached a state where it is unable to function or operate as intended. This can be frustrating.



Power is reduced when the battery cabinet is low



Can a Bad Battery Cause Engine Power Reduced?

Discover how unstable voltage from a failing battery misleads your engine's control module, activating the "Engine Power Reduced" safety mode.

How is the low temperature performance of the energy storage cabinet

Low temperature performance directly influences the storage capabilities and energy efficiency of these systems. When temperatures drop, the physical and chemical ...



Liquid-Cooled Battery Cabinet Battery Balancing Technology: ...

In liquid-cooled cabinets, batteries are packed more densely and operate at higher power levels. Under these conditions, even small inconsistencies may amplify local ...

Tesla "Electrical System Power Reduced":

...

If the low-voltage battery is not functioning correctly, it can cause electrical system power reduction warnings to appear on the ...



Battery Voltage Drop: Common Causes and ...

Below are some detailed insights into why a battery's voltage declines: A decrease in a battery's voltage, though natural as it discharges, can be ...



What is the impact of low

Low - frequency charging keeps the battery temperature within a safe range, reducing the likelihood of thermal runaway. Thermal runaway is a dangerous situation where the battery ...



Battery Voltage Drop: Common Causes and Effective Solutions

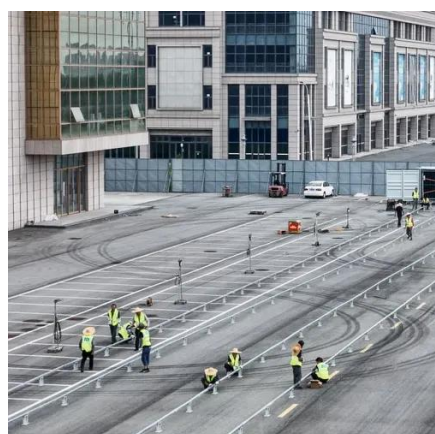
Below are some detailed insights into why a battery's voltage declines: A decrease in a battery's voltage, though natural as it discharges, can be aggravated by problematic connections ...





Battery Failure and Reduced Cranking Power

Reduced cranking power can indicate that battery failure is imminent. However, it can also simply be your car complaining about the ...



Battery Failure and Reduced Cranking Power

Reduced cranking power can indicate that battery failure is imminent. However, it can also simply be your car complaining about the cold. In this blog post, we'll cover what ...

How is the low temperature performance of the ...

Low temperature performance directly influences the storage capabilities and energy efficiency of these systems. When temperatures ...



Low Battery Problems? Common Causes and Quick Solutions

HBOWA stresses on the reliability of the system by implementing technologies that will reduce instances of low battery voltage, provided it does not cause the batteries to cycle ...



Tesla "Electrical System Power Reduced": Troubleshooting

If the low-voltage battery is not functioning correctly, it can cause electrical system power reduction warnings to appear on the dashboard. The low-voltage battery in a Tesla ...



Understanding Low Battery Issues and How to ...

In case of low battery power, solutions may include testing individual cells, checking voltage contacts, or using heating or freezing ...

Understanding the Causes and Consequences of Low Battery ...

When the battery is running low or almost dead, the device's power is significantly reduced, resulting in decreased efficiency. Low battery levels can cause a variety of issues ...



Understanding Low Battery Issues and How to Deal with Them

In case of low battery power, solutions may include testing individual cells, checking voltage contacts, or using heating or freezing techniques to reactivate the battery ...





Contact Us

For inquiries, pricing, or partnerships:

<https://www.sccd-sk.eu>

Phone: +32 2 808 71 94

Email: info@sccd-sk.eu

Scan QR code for WhatsApp.

