



Price of 10kW collapsible containers for Southeast Asian ports





Overview

Origin charges at US ports like Los Angeles or Long Beach can run \$400-\$800 per container. Destination charges in Southeast Asia vary wildly. Singapore might hit you for \$300, while smaller ports in Vietnam or Thailand could charge \$150-\$500 depending on handling.

Origin charges at US ports like Los Angeles or Long Beach can run \$400-\$800 per container. Destination charges in Southeast Asia vary wildly. Singapore might hit you for \$300, while smaller ports in Vietnam or Thailand could charge \$150-\$500 depending on handling.

The XSI® - C reports rolling short-term Freight All Kind (FAK) rates valid for less than 32 days, for a 40' container. XSI® - C Index Levels are calculated and monitored by Compass Financial Technologies and are published on each index release Date at 16:15 London time. Xeneta also reports for the.

Several routes and ports are commonly used for shipping containers from China to various destinations in Southeast Asia. Here's a general overview of the route: Container ships depart from major Chinese ports, including those in Shanghai, Shenzhen, Guangzhou, Qingdao, and others. These ports serve.

The carrier's charge to move your container from a US port to Southeast Asia. For FCL shipments, this is a flat fee regardless of whether your 40-foot container is packed to the ceiling or half empty. Current base rates are running around \$2,300 to \$3,500 per FEU depending on your route and timing.

Discover the convenience of purchasing both used and new shipping containers at the bustling ports of South East Asia with Herbert Containers. We provide high-quality, reliable containers at economical prices, ideal for storage, transport, and customization to meet your needs. Used and New Shipping.

This type of container is the most widely used container type in the world. It is suitable for both transportation and storage purposes 40 'Dry Containers also have the same features as 20' Dry Containers. However, in terms of their length, they are preferred for bulk loads. INTERNAL D INTERNAL.

The world's first 5-in-1 40' high cube shipping container that will revolutionize the



intermodal shipping industry by providing significant cost benefits, improving empty container repositioning efficiencies, and lowering harmful CO2 emissions. A collapsed bundle of five SeaFold 40' containers. What is compact containers?

Compact Containers serves the global shipping and intermodal industry with an efficient, low-cost means to transport containers by Road, Rail, or Sea. Discover the future of cargo logistics with Compact Containers. Our SeaFold 40' collapsible containers redefine efficiency & cost savings.

How does container size affect shipping rates?

The size and type of container you use will affect the shipping rate. Standard container sizes include 20-foot and 40-foot containers, but there are also specialized containers like refrigerated containers (reefers) and high cube containers. The distance and complexity of the shipping route play a significant role in determining rates.

How do container shortages affect shipping prices?

The availability of shipping containers can impact prices. Container shortages can occur when containers are stranded at certain ports, not returned promptly, or when demand exceeds supply. Container shortages can drive up leasing costs, which can be passed on to shippers.



Price of 10kW collapsible containers for Southeast Asian ports



Shipping Containers, Standard Dry Containers, Reefers, Special

We provide the most suitable price and the most intimate service. Tengfei Container is a Global SOC Shipping Container Supplier based in HK. With more than 15 years of industry ...

[IPME , New, Used, and Custom Shipping ...](#)

IPME is an industry leading retailer and fabricator of new, used, modified, and custom shipping containers and modular equipment. Call us now at ...



[Xeneta Shipping Index \(XSI-C\) , Global Container Price Index](#)

The XSI® - C is the container shipping industry's most transparent and trusted container rates index. It delivers the most in-depth and most accurate representation of the container freight ...

[Container shipping price index China to Southeast Asia](#)

Container freight China to Southeast Asia price index developments are calculated from multiple separate sources of data to ensure statistical



accuracy. Container freight shipping rates can ...

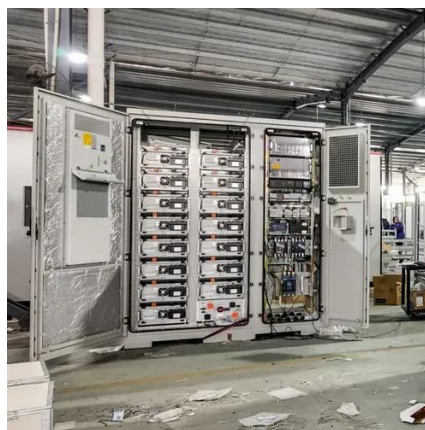


[Shipping Costs from the US to Southeast Asia \[2025 Guide\]](#)

Complete breakdown of shipping costs from the US to Southeast Asia. Get current FCL/LCL rates, tariff impact details, and cost reduction strategies for 2025.

[Compact Container Systems , Cost-Saving Collapsible Cargo](#)

A collapsed bundle of five SeaFold 40' containers accommodates the same slot as one conventional 40' High Cube container ...



[IPME , New, Used, and Custom Shipping Containers for Sale](#)

IPME is an industry leading retailer and fabricator of new, used, modified, and custom shipping containers and modular equipment. Call us now at 866-237-6302!



[Shipping Costs from the US to Southeast Asia ...](#)

Complete breakdown of shipping costs from the US to Southeast Asia. Get current FCL/LCL rates, tariff impact details, and cost ...



Shanghai Shipping Exchange

SEAFI reflects the spot rate changes of export containers on the services from Shanghai to Southeast Asia base ports. It includes freight rates (indices) of 6 individual shipping routes and ...

[SHIPPING Containers for sale in South east asia](#)

Discover the convenience of purchasing both used and new shipping containers at the bustling ports of South East Asia with Herbert Containers. We provide high-quality, reliable containers ...



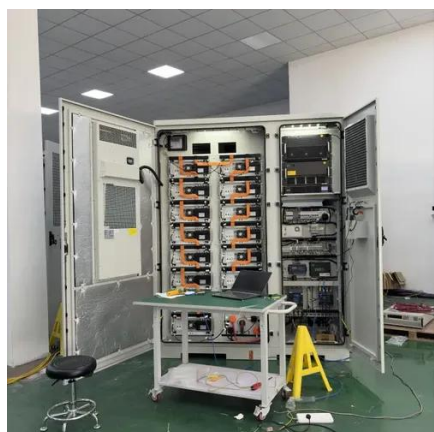
[South-east Asian ports record more action ahead ...](#)

The interesting trend from the month of August has been the 36% increase in the average container prices and the 21% increase in the one-way ...



South-east Asian ports record more action ahead of peak season

The interesting trend from the month of August has been the 36% increase in the average container prices and the 21% increase in the one-way leasing rates for the container in ...

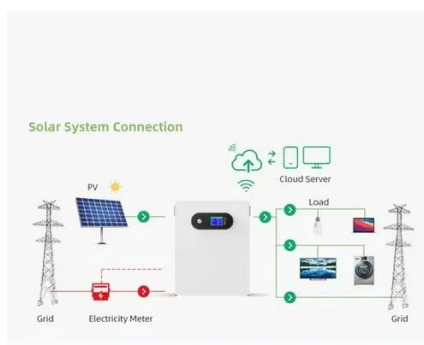


Revolutionize Shipping with Collapsible Shipping Containers: A ...

Collapsible shipping containers have emerged as a revolutionary solution to address these issues. Unlike traditional containers, collapsible containers can be folded and ...

[Compact Container Systems , Cost-Saving Collapsible Cargo](#)

A collapsed bundle of five SeaFold 40' containers accommodates the same slot as one conventional 40' High Cube container creating 80% more storage and operating cost ...





Contact Us

For inquiries, pricing, or partnerships:

<https://www.sccd-sk.eu>

Phone: +32 2 808 71 94

Email: info@sccd-sk.eu

Scan QR code for WhatsApp.

