



# Rack battery connected in parallel with inverter





## Overview

---

Rack batteries with  $\pm 5\%$  capacity variance in parallel can overstress newer cells. Pro Tip: Precharge all units to 50% SOC before connecting to minimize sparking. When batteries age unevenly, parallel groups force high currents into weaker units, causing overheating.

Rack batteries with  $\pm 5\%$  capacity variance in parallel can overstress newer cells. Pro Tip: Precharge all units to 50% SOC before connecting to minimize sparking. When batteries age unevenly, parallel groups force high currents into weaker units, causing overheating.

both inverter and battery par ATION SUBJECT TO CHANGE WITHOUT NOTICE. MODEL# 0A /1000 the design and testing of the inverter. Before beginning any work, carefully read all safety instructions, and always observe them when working on or with the inverter. The installation must follow all.

I had originally purchased 4 rack batteries these are 16S 100AH each rack 5KWH so total 20KWH and had created a battery bank of 20KWH and paired the with two SRNE 12KW hybrid inverters. The setup worked great but as the rack batteries did not have the UL9450 certification, ended up by buying 2.

We have come so close to 100% off grid efficiency but with only six EG4 Lifepower4 100Ah Server Rack batteries, at 30.7 kWh capacity, we're still short on battery storage. In this video, we'll try to figure out how best to add additional batteries to our existing battery storage. For new batteries.

Whether you're looking to power your home during an outage or optimize your off-grid setup, knowing how to connect an inverter to two parallel batteries, connect two inverter generators in parallel, and more, is essential. This guide will walk you through each step, ensuring you're well-equipped to.

Whether you're working with a single battery or multiple inverters, understanding how to properly connect batteries in parallel is crucial for the efficiency and longevity of your system. Let's explore two common scenarios and the requirements for safely parallel-connecting batteries. Imagine.

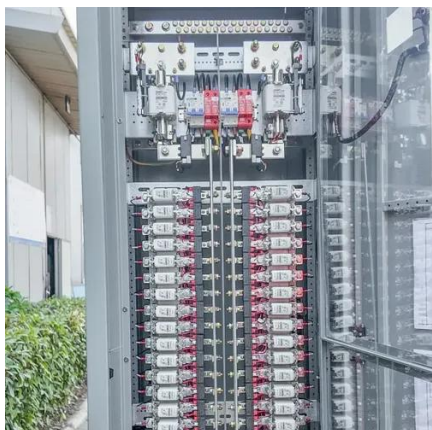
Here is the guide on how to connect 50kW Hybrid Inverters with Batteries in



Parallel. First note - Each 50kW Inverter MUST have it's own HV Battery pack, unlike cases of other hybrid inverter with LV battery, HV battery can only be connected separately to HV hybrid inverters. For example, Inverter.



## Rack battery connected in parallel with inverter



### Parallel Connection of Batteries in DIY Solar Power Systems: ...

Whether you're working with a single battery or multiple inverters, understanding how to properly connect batteries in parallel is crucial for the efficiency and longevity of your ...

### CONNECTION OVERVIEW & PARALLELING GUIDE

The battery set to address 1 will connect directly to the inverter BMS communication port via CAT 5, 5e or CAT 6 cable (when using non-EG4 inverters, check the manufacturer's documentation ...



### How to Integrate Rack Lithium Batteries with Solar and ESS ...

Integrating rack lithium batteries with solar and energy storage systems (ESS) involves matching inverters, robust BMS, and scalable rack architecture. LiFePO4 chemistry ensures safety and ...



### How to Connect Multiple Rack Lithium Batteries in Series or Parallel

Connecting rack lithium batteries involves series (voltage addition) or parallel (capacity addition)



configurations. Series connects positive to negative terminals, boosting voltage (e.g., 48V x2 = ...



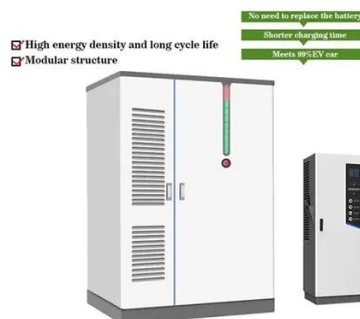
### [Connecting Multiple Batteries to an Inverter: Easy Guide](#)

Need more battery capacity on your inverter? Let's look at how to add more batteries and how many batteries you can connect to an inverter.



### [Connecting Inverters and Batteries for Maximum Efficiency](#)

Whether you're looking to power your home during an outage or optimize your off-grid setup, knowing how to connect an inverter to two parallel batteries, connect two inverter ...



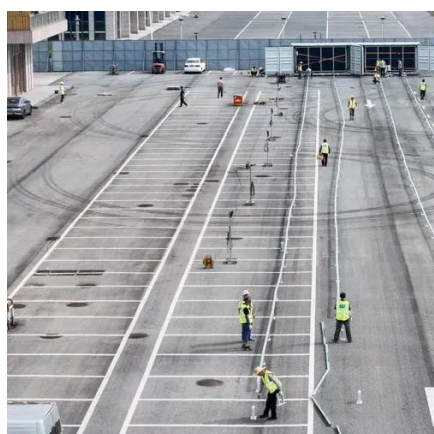
### [How to Connect Two Batteries in Parallel to an Inverter?](#)

In home or commercial applications, connecting batteries to an inverter is a common task. Connecting two batteries in parallel to an inverter can increase the system's ...



## Mixing wall mount 280AH and rack battery 100ah

Currently I am using bus bar to combine the two GSL in parallel to create one battery bank to connect to the two hybrid SRNE inverters that are setup in parallel mode



## Parallel Connection of Batteries in DIY Solar ...

Whether you're working with a single battery or multiple inverters, understanding how to properly connect batteries in parallel is ...

## **50kW in Parallel**

Here is the guide on how to connect 50kW Hybrid Inverters with Batteries in Parallel. First note - Each 50kW Inverter MUST have it's ...



## Combining EG4 Wall Mount + Server Rack Batteries

The second process is adding the EG4 Wall Mount Indoor battery in parallel to the server rack batteries so that the inverters can pull and charge to both of the new battery banks.



## 50kW in Parallel

Here is the guide on how to connect 50kW Hybrid Inverters with Batteries in Parallel. First note - Each 50kW Inverter MUST have it's own HV Battery pack, unlike cases of ...





## Contact Us

---

For inquiries, pricing, or partnerships:

<https://www.sccd-sk.eu>

Phone: +32 2 808 71 94

Email: [info@sccd-sk.eu](mailto:info@sccd-sk.eu)

Scan QR code for WhatsApp.

