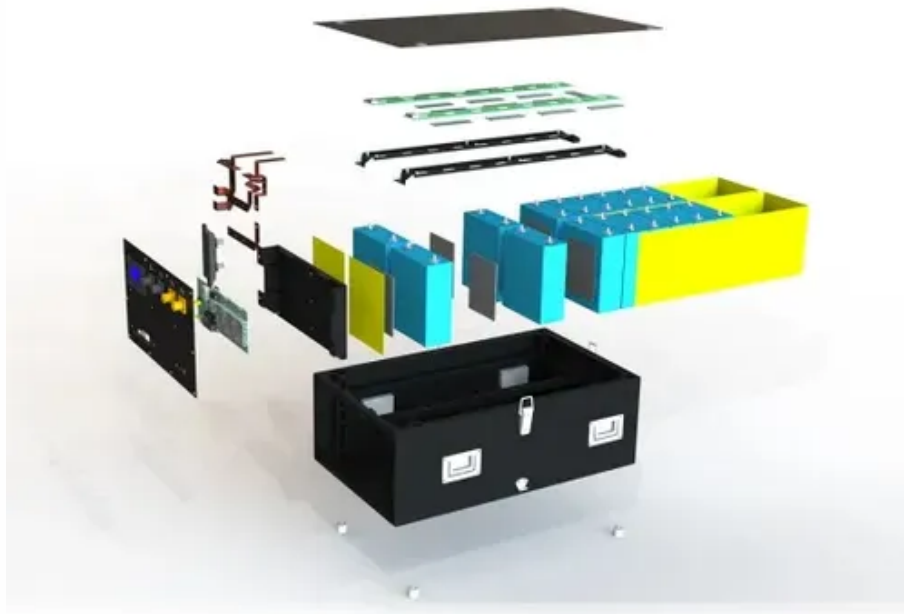




Riyadh base station was powered by





Overview

It was originally used by Saudia as an airline hub before King Khalid International Airport opened in 1982.

It was originally used by Saudia as an airline hub before King Khalid International Airport opened in 1982.

King Salman Air Base (Arabic: **الجوية سلمان الملك قاعدة**) (ICAO: OESN) is a Royal Saudi Air Force (RSAF) base located south of Riyadh. It is aimed at relocating RSAF operations from the old Riyadh Air Base to the new site, which was demolished between 2021 and 2022 for Saudi Vision 2030. The air base.

King Salman Air Base (ICAO: OERY, Arabic: **الجوية سلمان الملك قاعدة**), formerly known as Riyadh Air Base until 2015 with the commencement of " Decisive Storm " and formerly known as Riyadh International Airport from its opening in 1946 until 1983, was a military air base in Riyadh, Saudi Arabia. It.

King Salman Air Base (ICAO: OERY, Arabic: **الجوية سلمان الملك قاعدة**), is an Royal Saudi Air Force (RSAF) air base that is currently under construction. It is aimed at relocating RSAF operations from the old Riyadh Air Base to the new site, which was demolished between 2021 and 2022 for Saudi Vision.

While US military sites are scattered throughout various part of the globe, the country of Saudi Arabia does have the Eskan Village Air Base Saudi Arabia as a functioning and welcoming army base that serves both as long-term residence for people in the air force as well as a way for the Saudi air.

Riyadh Air Base (ICAO: OERY, Arabic: **الجوية الرياض قاعدة**), formerly known as Riyadh International Airport from its opening in 1946 until 1982, is a military air base in Riyadh, Saudi Arabia. It was originally used by Saudia as an airline hub before King Khalid International Airport opened in 1982.

Riyadh, which means "the gardens" in Arabic, is the capital of Saudi Arabia, located in the Central Province. In an advantageous location in the Hanifa valley, the city and surroundings are very green and boast many parks. Summers bring extreme heat and dryness, followed by mild winters and cool. Where is Riyadh Airport?



Originally served Riyadh was the former Riyadh Air Base, it was located at $24^{\circ}42'35''\text{N}$ $46^{\circ}43'31''\text{E}$. The old airport was demolished to construct King Salman Park, with airport grounds are now converted into construction sites and hills and the Air Base is demolished for the sake of the project.

Why is Riyadh Air Base important?

Riyadh Air Base, Saudi Arabia is one of the most important American bases due to the strategic location. It is right in the Middle East, giving the American troops the chance to easily support their potential invasions in the area. The base is located in the capital of Saudi Arabia. Riyadh refers to multiple gardens [.].

Is Riyadh Air Base privatized?

The privatized system is usually more expensive, but it provides better facilities. Some of the most important units hosted at Riyadh Air Base include the Military Training Mission, a few parts of the USMTM Division of the Air Force and the Extended Training Service Specialists.

Where is the US military based in Riyadh?

After a period of reduced presence, tensions with Iran and concerns about regional instability led to a renewed US military buildup, particularly focusing on air defense and missile defense capabilities. Prince Sultan Air Base (PSAB), located southeast of Riyadh, is the primary location where the US military maintains a visible presence.



Riyadh base station was powered by



[Where are US military bases in Saudi Arabia?](#)

Prince Sultan Air Base (PSAB), located southeast of Riyadh, is the primary location where the US military maintains a visible presence. This base has undergone ...

About: Riyadh Air Base

Riyadh Air Base (ICAO: OERY, Arabic: ?????? ?????? ???????), formerly known as Riyadh International Airport from its opening in 1946 until 1982, is a military air base in Riyadh, Saudi Arabia. It was ...

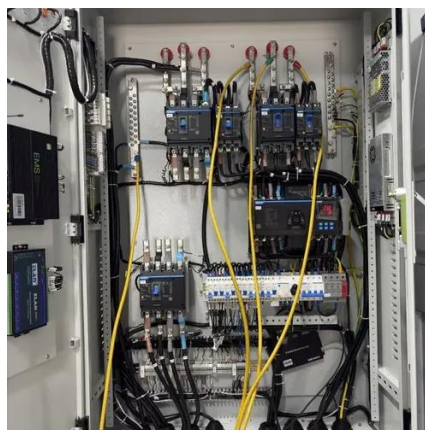


Riyadh, Saudi Arabia

KC-135 tankers and crews relocated from Riyadh Air Base to Prince Sultan following the Khobar Towers bombing. The relocation to Prince Sultan -- ...

Riyadh Air Base Map

Riyadh Air Base King Salman Air Base, is an Royal Saudi Air Force air base that is currently under construction. It is aimed at relocating RSAF operations from the old Riyadh Air Base to ...



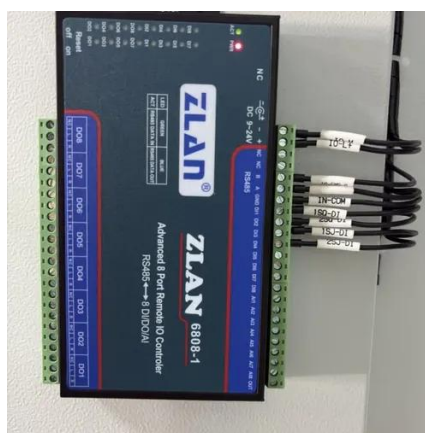
King Salman Air Base

The Ministry of Defense and Royal Saudi Air Force began the relocation from the former King Salman Air Base to the new site. On 14 May 2020, the site was handed over to its contractors.



King Salman Air Base

King Salman Air Base is capable of supporting fourth-generation and fifth-generation aircraft, and also advanced unmanned aerial vehicles. It is currently equipped with maintenance hangars, ...



Riyadh, Saudi Arabia

KC-135 tankers and crews relocated from Riyadh Air Base to Prince Sultan following the Khobar Towers bombing. The relocation to Prince Sultan -- about 50 miles southeast of Riyadh -- will





[Riyadh Air Force Base in Riyadh, SAUDI ARABIA](#)

Riyadh Air Base, Saudi Arabia is one of the most important American bases due to the strategic location. It is right in the Middle East, giving the American troops the chance to easily support ...



1075KWHH ESS



King Salman Air Base

All 301 people aboard were killed in this disaster. In December 1983, King Khalid International Airport was opened, which led to this airport becoming a Royal Saudi Air Force (RSAF) air base.

[Riyadh Air Force Base in Riyadh, SAUDI ARABIA](#)

Riyadh Air Base, Saudi Arabia is one of the most important American bases due to the strategic location. It is right in the Middle East, giving the ...



[US Military Bases in Saudi Arabia , 5 Bases , MilitaryBases](#)

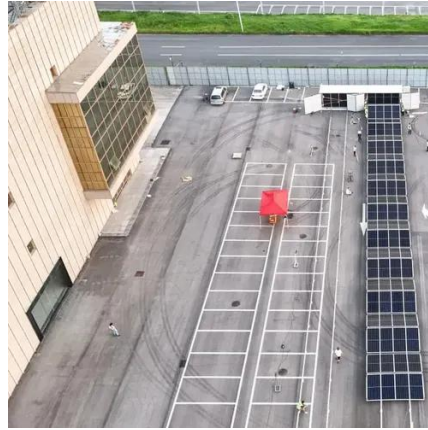
King Abdul Aziz Air Base is a Royal Saudi Air Force operated military installation. It is named in the memory of King Abdul Aziz, also referred to as Ibn Saud among the citizens.





[Riyadh Air Base -- Wikipedia Republished](#) [// WIKI 2](#)

All 301 people aboard were killed in this disaster. In December 1983, King Khalid International Airport was opened, which led to this airport becoming a Royal Saudi Air Force (RSAF) air base.



[Where are US military bases in Saudi Arabia?](#)

Prince Sultan Air Base (PSAB), located southeast of Riyadh, is the primary location where the US military maintains a visible presence. ...



Contact Us

For inquiries, pricing, or partnerships:

<https://www.sccd-sk.eu>

Phone: +32 2 808 71 94

Email: info@sccd-sk.eu

Scan QR code for WhatsApp.

