



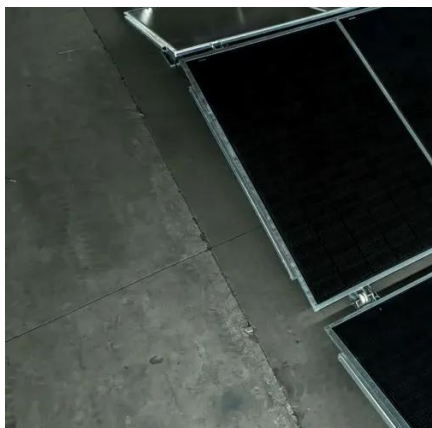
# Rome Outdoor Power Factory





## Rome Outdoor Power Factory

---



### [Centrale Montemartini in Rome , Atlas Obscura](#)

The power station first opened in the industrial Ostiense Marconi area in 1912 and gave electricity to much of the city from its place on the Tiber River, until it was closed in 1963.

### [Easy Guide to Centrale Montemartini Museum in Ostiense](#)

History of Centrale Montemartini Power Plant  
What to See in Centrale Montemartini Museum  
Visiting Centrale Montemartini Museum: Practical Information  
What to See and Where to Eat Near Centrale Montemartini Museum  
Opened in 1912 between the General Warehouses and the left bank of the Tiber river, Rome's main power plant was established in an area where it would have been easy to source the necessary water. From here, electricity was produced with steam turbines, furnaces and diesel engines. The machine room was totally refurbished in the early 1930s and in 1 See more on romeactually Turismo Roma



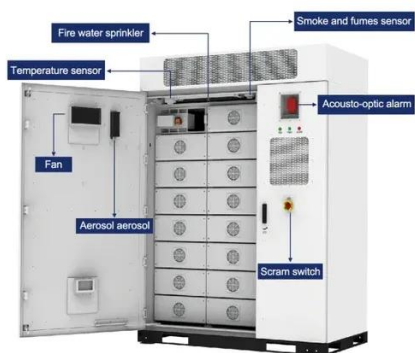
## Centrale Montemartini - Turismo Roma

Dedicated to Giovanni Montemartini, it was the first electrical power station; later converted into a museum of ancient Roman art, today it is the second exhibition centre of the Capitoline ...

### [The Power Plant , Musei Capitolini Centrale Montemartini](#)



The Centrale Montemartini was the first public electricity generating plant in Rome. Built on Via Ostiense, between the Mercati Generali and the left bank of the Tiber, it was ...



## Montemartini Power Station, Rome

Along the Via Ostiense on the left bank of the Tiber, the Montemartini thermoelectric power station, opened in 1912, is an extraordinary example ...



## Centrale Montemartini, Rome

Centrale Montemartini is a former thermoelectric power plant that was transformed into a museum of ancient Roman art. The huge machines ...



## [Easy Guide to Centrale Montemartini Museum in Ostiense](#)

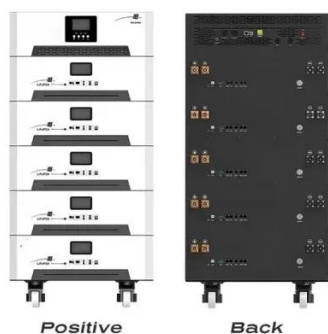
Opened in 1912 between the General Warehouses and the left bank of the Tiber river, Rome's main power plant was established in an area where it would have been easy to ...





## Centrale Montemartini, Rome

Centrale Montemartini is a former thermoelectric power plant that was transformed into a museum of ancient Roman art. The huge machines are still there, and their hulking gray mass forms an ...



## [Centrale Montemartini in Rome , Atlas Obscura](#)

The power station first opened in the industrial Ostiense Marconi area in 1912 and gave electricity to much of the city from its place ...



## [Centrale Montemartini: one of Rome's Best-Kept Secret](#)

Among these treasures, the Centrale Montemartini stands out as one of the most fascinating and lesser-known gems. Located on Via Ostiense, this former power plant now ...



## Centrale Montemartini

Dedicated to Giovanni Montemartini, it was the first electrical power station; later converted into a museum of ancient Roman art, today it is the second exhibition centre of the Capitoline ...





## Centrale Montemartini: An Art Historian's Guide

It was the first municipal power plant that helped provide power to a good portion of the city of Rome. The name comes from the plant's councilor, Giovanni Montemartini, who ...



## Centrale Montemartini Museum of Rome

Immerse yourself in two worlds at Centrale Montemartini, a former electrical power plan in Rome that now houses sculptures from the Capitoline collection. Book our Private Tour.



## **Montemartini Power Station, Rome**

Along the Via Ostiense on the left bank of the Tiber, the Montemartini thermoelectric power station, opened in 1912, is an extraordinary example of the redevelopment of an industrial ...

## Centrale Montemartini: An Art Historian's Guide

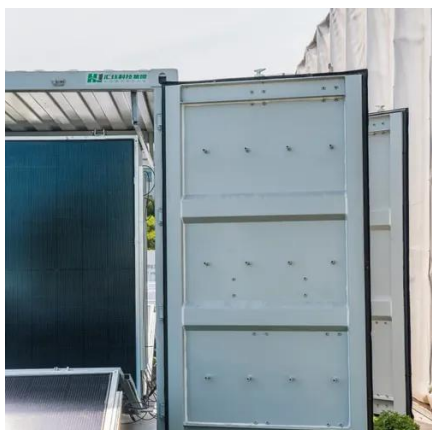
It was the first municipal power plant that helped provide power to a good portion of the city of Rome. The ...





## [Centrale Montemartini Museum of Rome](#)

Immerse yourself in two worlds at Centrale Montemartini, a former electrical power plant in Rome that now ...



## [Centrale Montemartini Museum, Rome, Wandering Italy Blog](#)

The Centrale Montemartini museum juxtaposes Roman statues in front of industrial machinery in an steam-driven power plant in the heart of Rome. It's a unique museum we ...



## [Centrale Montemartini Museum, Rome, Wandering Italy Blog](#)

The Centrale Montemartini museum juxtaposes Roman statues in front of industrial machinery in an steam ...





## Contact Us

---

For inquiries, pricing, or partnerships:

<https://www.sccd-sk.eu>

Phone: +32 2 808 71 94

Email: [info@sccd-sk.eu](mailto:info@sccd-sk.eu)

Scan QR code for WhatsApp.

