



Serbia solar container outdoor power customization





Serbia solar container outdoor power customization



Alliance System

ALLIANCE SYSTEMbismarck's alliance systemrival alliance systemthe alliance system and the outbreak of war Source for information on Alliance System: Encyclopedia of Modern Europe: ...

Serbia

Serbia requires an onward/return ticket, sufficient funds for the stay, and a certificate showing funds for health care. Visas are required for all nationals except those of 41 countries including ...



Multi-Ethnic Conflict: Yugoslavia

Only Serbia and Montenegro remained together as one nation called Serbia. The new nations of Slovenia and Macedonia proved somewhat stable, but conflict raged among the Serbs, ...

Yugoslavia

The new, socialist Yugoslavia was organized as a federation of six republics: Slovenia, Croatia, Bosnia-Herzegovina, Serbia, Montenegro, and Macedonia. In addition, Vojvodina and Kosovo ...



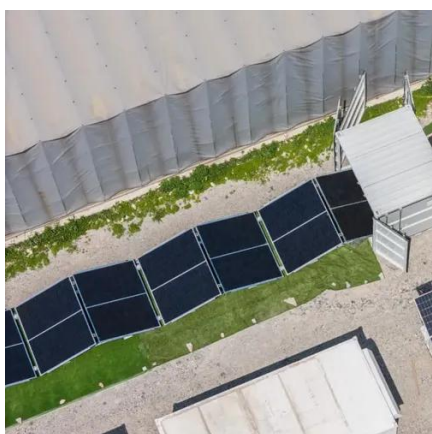
Serbia and Montenegro

On April 27, 1992 in Belgrade, Serbia and Montenegro joined in passing the Constitution of the Federal Republic of Yugoslavia. In March 2002, the Belgrade Agreement was signed by the ...



Bylaws of the Organization: Union or Death

The provinces had a large population of Serbians, Croats, and Muslims, with annexation predictably outraging Serbia. The Serbian government threatened to invade Bosnia and ...



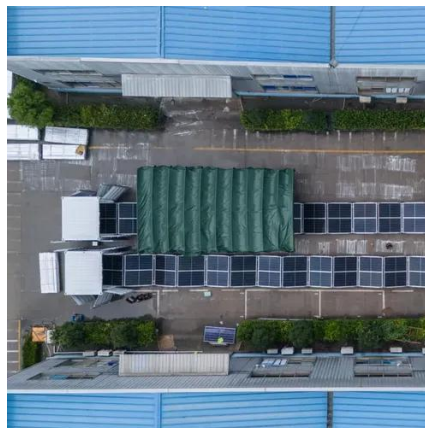
Karadjordje

KARADJORDJE KARADJORDJE (Djordje Petrovi?; 1768-1817), Serbian revolutionary leader. Djordje Petrovi?, known as "Karadjordje" (kara is a Turkish prefix meaning black), led the ...



Yugoslavia (Serbia and Montenegro)

Yugoslavia (Serbia and Montenegro) At a Glance
Official Name: Socialist Federal Republic of
Yugoslavia Continent: Europe Area: 39,517 square
miles (102,350 sq. km) Population: ...



Milosevic, Slobodan

Milosevic, Slobodan 1941-2006 BIBLIOGRAPHY
Slobodan Milosevic was the president of Serbia
from 1989 to 1997, and president of the Federated
Republic of Yugoslavia ...

Belgrade

Belgrade (Beograd) Capital of Serbia and
Montenegro, and of Serbia, at the confluence of
the Sava and Danube rivers. Belgrade became
capital of Serbia in the 12th ...





Contact Us

For inquiries, pricing, or partnerships:

<https://www.sccd-sk.eu>

Phone: +32 2 808 71 94

Email: info@sccd-sk.eu

Scan QR code for WhatsApp.

