



# Single-axis inverter 3 7 kW power





## Single-axis inverter 3 7 kW power

---



### [Fox Hybrid Inverter H1-3.7 3.68kW with EPS](#)

The Fox H1-3.7-E is a 3.68kW, single phase hybrid inverter with EPS function. Designed to convert solar energy to AC energy and store energy into a battery, the hybrid inverter has a ...

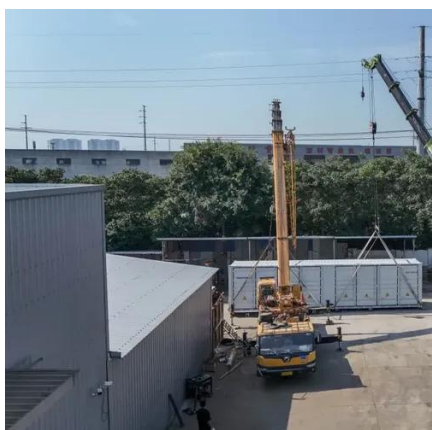
### [Single-phase Hybrid Inverter Solax X1-Hybrid 3.7 \(3.7kW\)](#)

Nominal frequency of the grid; range - 50/60Hz  
Maximum current, variable - 16A Power factor adjustment - 0.8 leading ~ 0.8 lagging THDi at rated power - <2% BATTERY OUTPUT ...



### [Solax X1-Hybrid G4 3.7kW HV Single Phase Hybrid Inverter](#)

Solax X1-Hybrid G4 3.7kW Hybrid Inverter is a single-phase hybrid inverter, ideal for home solar systems. When paired with a battery, this inverter provides an uninterruptible power supply to ...



### [Single Phase Hybrid Inverter 3.7kW , Solax Hybrid ...](#)

Solax Single Phase Hybrid Inverter 3.7 kW - High Voltage SolaX Power is delighted to announce the launch of the eagerly anticipated third ...



### **Solax inverter X1 Retrofit 3.7kW**

With a 3.7 kW battery output power, this Solax Retrofit inverter connects to your domestic lithium batteries. Thanks to its integrated Internet communication, it sends all your data directly to the ...



### Single Phase Hybrid Inverter 3.7kW , Solax Hybrid Inverter

Solax Single Phase Hybrid Inverter 3.7 kW - High Voltage SolaX Power is delighted to announce the launch of the eagerly anticipated third generation of our market-leading solar product ...



### 3.7 kW Single Phase Output Frequency Inverter

3.7kw single phase variable speed drive, 1-phase 220v 50Hz/60Hz input and single phase 0-220v output. Equipped with a panel speed adjustment knob, the inverter speed can be manually ...





## Solax inverter X1 Retrofit 3.7kW

With a 3.7 kW battery output power, this Solax Retrofit inverter connects to ...



## Solax Hybrid Inverter G4 X1 3.7-D

The inverter guarantees durability and compatibility, even in low-temperature environments, with IP65 protection and support for high-power solar panels. Effortlessly store surplus energy and ...

[Solax X1-Hybrid-3.7-D , Inverters , sun.store](https://sun.store)

Do you need this product? Send a request for proposal to Sellers!



Standard 20ft containers



Standard 40ft containers

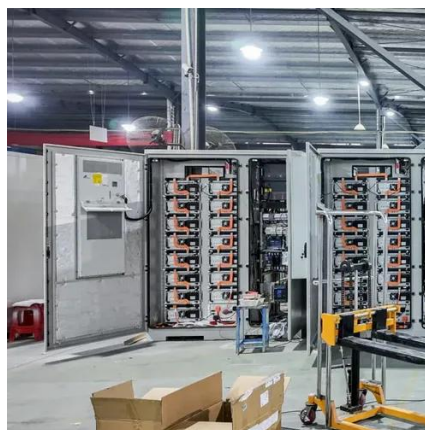
## [Fox Hybrid Inverter H1-3.7 3.68kW with EPS](#)

The Fox H1-3.7-E is a 3.68kW, single phase hybrid inverter with EPS function. Designed to convert solar energy to AC energy and store energy ...



## [SolaX X1-Hybrid-LV Datasheet EN V2.1-20250717](#)

Any higher input DC voltage would probably damage the inverter 2 The AC frequency range may vary from different country codes.



Lower cost larger system

Verified Supplier

20Kwh  
30Kwh

Five yellow stars

## [Solax X1 Hybrid G4 Single Phase Inverter 3.7kW](#)

Experience the cutting-edge technology of the Solax X1 HYBRID G4 3.7kW Hybrid Inverter. Designed for seamless integration and maximum efficiency, this advanced inverter offers a ...

## [3.7 kW Single Phase Output Frequency Inverter](#)

3.7kw single phase variable speed drive, 1-phase 220v 50Hz/60Hz input ...





## Contact Us

---

For inquiries, pricing, or partnerships:

<https://www.sccd-sk.eu>

Phone: +32 2 808 71 94

Email: [info@sccd-sk.eu](mailto:info@sccd-sk.eu)

Scan QR code for WhatsApp.

