



# Solar EMS energy storage management system





## Overview

---

The EMS optimizes the performance of energy storage systems by managing the charging and discharging cycles of batteries. This ensures longer battery life, better energy utilization, and higher overall system efficiency.

The EMS optimizes the performance of energy storage systems by managing the charging and discharging cycles of batteries. This ensures longer battery life, better energy utilization, and higher overall system efficiency.

An Energy Management System (EMS) is a comprehensive solution designed to monitor, control, and optimize energy production, storage, and consumption within an energy storage system. EMS ensures that the energy system operates efficiently, reduces energy wastage, and maximizes cost-effectiveness. It

It is a smart system that tracks how much energy your home is producing. Some EMSs can then, taking your input and preferences into account, use an advanced algorithm to make decisions about where and when to use that energy in the most efficient way possible. Where integrated with solar power and.

An Energy Management System (EMS) is an intelligent control platform that monitors, optimizes, and manages the flow of energy within a solar power system or hybrid renewable setup. In modern solar workflows, an EMS acts as the “brain” of the system—coordinating solar production, battery storage.

Battery inefficiencies: Without smart energy storage management, batteries can be underutilized or overworked, leading to premature degradation and energy waste). Weather unpredictability: Extreme heat, storms, and seasonal shifts impact solar energy production, requiring smart forecasting and.

For prosumers, effective energy management is essential for maximizing savings, minimizing grid dependence, and advancing decarbonization goals. Central to this effort is a robust Energy Management System (EMS), which integrates advanced forecasting, automation, and energy storage control to ensure.

An Energy Management System (EMS) is the central intelligence layer that monitors, controls, and optimizes the operation of an energy storage system (ESS). While the BMS manages batteries at the cell and module level, the EMS takes a



broader view—coordinating energy flow between the battery.



## Solar EMS energy storage management system

---

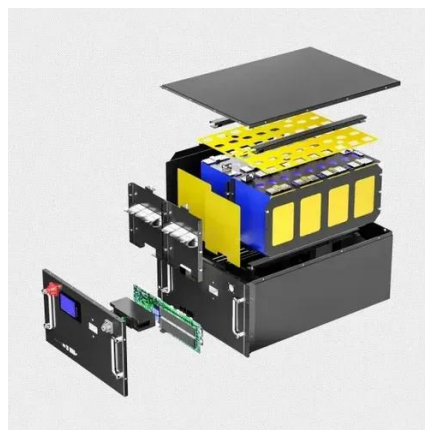


### Energy Management System (EMS)

One of the primary functions of EMS is integrating renewable energy sources, such as solar and wind, into the energy storage system. By managing the input from these sources, EMS helps ...

### [What Is An Energy Management System? Complete Guide 2025](#)

Our in-house certified professionals design custom solar panel systems, battery storage solutions, and smart energy management integration that work seamlessly with ...



### [Energy Management System \(EMS\): An Optimisation Guide](#)

Wattstor's proprietary Podium EMS solution is an advanced energy management platform that's designed to streamline and optimise the way energy is generated, stored, consumed, and ...

### What is an EMS?

Smart and holistic energy management through an EMS ensures that rooftop solar covers as much energy demand as possible and only limited solar power goes to waste.



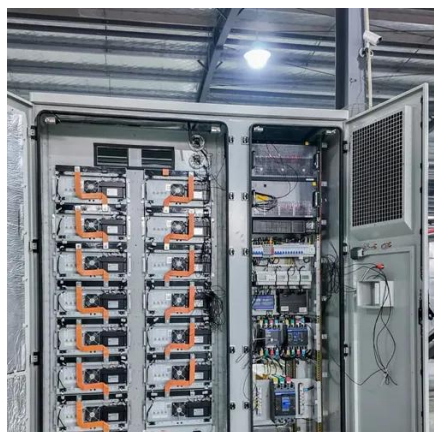
## [Top Advanced Solar Energy Management System in the USA](#)

Addressing these challenges requires an advanced Solar Energy Management System (EMS) that optimizes performance, reduces inefficiencies, and lowers maintenance costs.



## **Smart EMS Enabling Prosumer Efficiency with Solar and Storage**

Discover how Smart Energy Management Systems (EMS) enhance prosumer efficiency by optimizing solar energy generation, storage, and consumption. Learn how ...



## [Energy Management Systems for Home, SolarEdge](#)

If your solar energy system has battery storage, the EMS controls how and when energy is stored. This allows excess solar power to be saved and used during times when the ...



## Smarter Energy Flow: The Role of EMS in Modern Energy Storage

What Is an EMS and Why It Matters in ESS. An Energy Management System (EMS) is the central intelligence layer that monitors, controls, and optimizes the operation of ...



### [Stem Launches PowerTrack EMS to Optimize Standalone and HES](#)

PowerTrack EMS is an intelligent control system that manages battery charging and discharging operations while coordinating grid services and enabling revenue streams for ...

## EMS (Energy Management System) -- How It Controls Solar + Storage

An Energy Management System (EMS) intelligently manages energy flow across solar generation, storage, and loads. EMS boosts energy savings, enhances reliability, and ...





## Contact Us

---

For inquiries, pricing, or partnerships:

<https://www.sccd-sk.eu>

Phone: +32 2 808 71 94

Email: [info@sccd-sk.eu](mailto:info@sccd-sk.eu)

Scan QR code for WhatsApp.

