



Solar container should open the host first or the battery cabinet first





Overview

However, each controller may have a different threshold for this protection so above all else, it is always good practice to connect the battery first and then the solar panels to ensure system success and ability to program your controller.

However, each controller may have a different threshold for this protection so above all else, it is always good practice to connect the battery first and then the solar panels to ensure system success and ability to program your controller.

The way that you deploy a mobile solar container efficiently can mean the difference between reliable, safe power. or frustration, power loss, or equipment failure. So, what do you do to make setup simple, especially in the field?

Dissect it with me. Well, first of all: why are you deploying this.

The solar battery cabinet, a crucial component for storing and managing solar batteries, ensures efficient system operation and optimal energy utilization. This article provides a detailed guide on installing a solar battery cabinet, helping you complete the installation process smoothly and enjoy.

age system can store 10 kWh of electricity. In the nighttime when there is no solar energy, the internal battery supplies power to the household load through PCS. When solar energy is available during the day, the solar energy supporting the full weight of the cabinet. A concrete surface or .

Whether you're using lithium-ion or lead-acid batteries, the right enclosure does more than just hold your system together—it protects it from weather, overheating, unauthorized access, and even fire risks. But with so many options out there, how do you choose the right one?

In this guide, we'll.

Connect the battery terminal wires to the charge controller FIRST, then connect the solar panel (s) to the charge controller. NEVER connect solar panel to charge controller before the battery. You might be asking yourself why?

Or if there are any exceptions?



The purpose of this article is to answer.

To ensure you get the most out of this product, we have put together an outdoor solar battery cabinet installation guide for you. Choosing the appropriate installation location is key to ensuring the performance of your outdoor solar battery cabinet. First, you need to find a location that receives.



Solar container should open the host first or the battery cabinet first



How to Build a Solar Battery Box: A Comprehensive Guide for ...

Discover the ultimate guide to building your own solar battery box and harness the power of renewable energy! This article outlines the essential tools and materials you need, ...

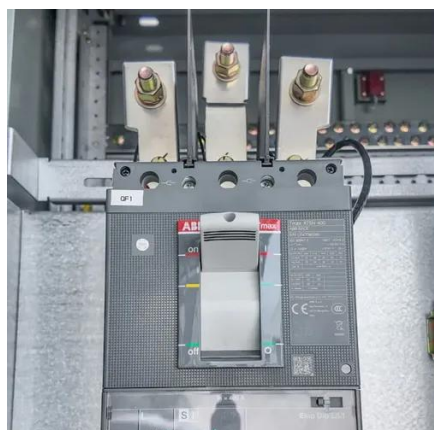
[Step-by-Step Solar Battery Cabinet Installation Guide](#)

Follow this detailed guide for a smooth installation of your solar battery cabinet and maximize renewable energy use



Battery Wiring Order , Renogy US

Connect the battery terminal wires to the charge controller FIRST, then connect the solar panel (s) to the charge controller. NEVER connect solar panel to charge controller before the battery. ...



[How to Set Up a Mobile Solar Container Effectively](#)

Learn how to set up a mobile solar container efficiently--from site selection and panel alignment to battery checks and EMS ...



How to Set Up a Solar Container for Sustainable Energy Solutions

The first step in this process involves selecting an appropriate shipping container that will house your solar equipment. Ensure the container is in good condition, with no structural damages, ...



[Solar container battery cabinet user manual](#)

Each battery cabinet is equipped with a liquid cooling system, which can thermally manage the battery cluster, enabling the battery to operate at the most suitable temperature range, ...



[How to Set Up a Mobile Solar Container Effectively](#)

Learn how to set up a mobile solar container efficiently--from site selection and panel alignment to battery checks and EMS configuration. Avoid common mistakes and get ...





Solar Battery Enclosures: How to Choose the Right One for ...

Choosing the right battery enclosure for your solar system isn't just a minor detail--it's a major decision that affects safety, performance, and longevity.

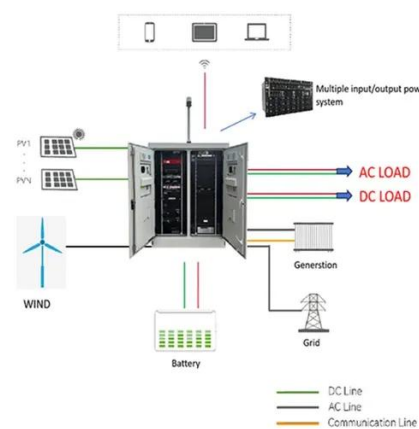


Finding the Perfect Home for Your Home Battery: Indoor vs. Outdoor

Both options have their benefits, and the best choice depends on your specific situation. Let's delve into the factors to consider for indoor vs. outdoor solar battery installation. Safety is ...

Solar Battery Enclosures: How to Choose the Right One for Safety

Choosing the right battery enclosure for your solar system isn't just a minor detail--it's a major decision that ...



Outdoor Solar Battery Cabinet Installation Guide: Ensuring

This guide provides step-by-step instructions on how to install your R-BOX-OC outdoor solar battery cabinet, including site selection, assembly, wiring, and system testing.



[How to open the solar energy storage bin](#) [.NenPower](#)

Before opening the solar energy storage bin, it is crucial to undertake preparatory measures to ensure safety and efficiency. 1. Familiarize yourself with the user manual, 2. ...





Contact Us

For inquiries, pricing, or partnerships:

<https://www.sccd-sk.eu>

Phone: +32 2 808 71 94

Email: info@sccd-sk.eu

Scan QR code for WhatsApp.

