

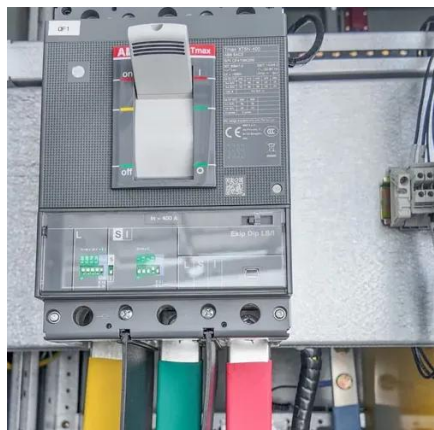


Solar glass as a percentage of glass





Solar glass as a percentage of glass

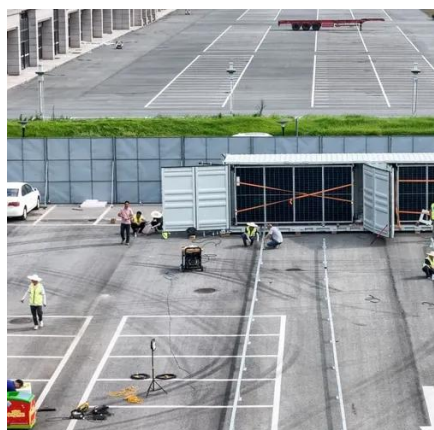


Performance GUIDE

Selecting glass for a project is an important and sometimes difficult task, to assist in this process G.James offers the following recommendation for viewing glass samples.

Definitions of Key Terms

% Total Solar Energy Rejected (TSER): The percent of incident solar energy rejected by a glazing system. This value equals solar reflectance plus the part of solar absorption that is both re ...



[Solar Glass & Mirrors, Photovoltaics , Solar Energy](#)

Base-line commercial glass has a solar transmission of 83.7%. I.e. 16.3% of the sun's energy do not even get to the PV material. The energy loss is due - in equal parts - to reflection on the ...

[Solar Factor: What It Is and How to Calculate It](#)

The solar factor g is the ratio between the solar energy that manages to pass through the glass entering the environment and the total solar



energy that strikes the outer ...



Solar Glass

The Most Comprehensive Selected Top Class Chinese Glass Machines, Products and Services Resource

Solar Panel Glass Specifications Explained

Definition: It represents the proportion of solar energy that passes through the glass. Range: For thin-film glass, the solar factor ...




-  Extreme Light Weight
-  X3 Extended Cycle life
-  Low Self Discharge
-  Superior Cranking Power
-  Completely Sealed
-  Environmental

Solar Glass - Sants Group

This refers to the percentage of solar radiation that passes through the glass. For standard solar glass, it's often around 91% for a 3.2mm thickness. Anti-reflective coatings can increase this ...



Key Glass Performance Measures

Visible light transmittance (VLT) is a percentage of the visible portion of the solar energy spectrum coming through the glass. It is expressed as a figure between 0 (no light) and ...



Visible Transmittance

Visible transmittance, also referred to as light transmittance or solar transmittance, is the measurement of visible light passing through a piece of glass. Visible transmittance can be ...

[Solar Panel Glass Specifications Explained](#)

Definition: It represents the proportion of solar energy that passes through the glass. Range: For thin-film glass, the solar factor typically ranges from 10% to 40%. Impact: A ...



Performance value terms

Solar Energy Direct Transmittance (T_e , %) is the percentage of incident solar energy in the wavelength range of 300 nm to 2500 nm that is directly ...



Performance value terms

Solar Energy Direct Transmittance (T_e , %) is the percentage of incident solar energy in the wavelength range of 300 nm to 2500 nm that is directly transmitted by the glass.

INTEGRATED DESIGN
EASY TO TRANSPORT AND INSTALL,
FLEXIBLE DEPLOYMENT





Contact Us

For inquiries, pricing, or partnerships:

<https://www.sccd-sk.eu>

Phone: +32 2 808 71 94

Email: info@sccd-sk.eu

Scan QR code for WhatsApp.

