



# Solar panel charging wattage





## Overview

---

To charge a 12V battery with a capacity of 100 amp-hours in five hours, you need at least 240 watts from your solar panels (20 amps x 12 volts). A 300-watt solar panel or three 100-watt panels are recommended. This setup ensures efficient charging and meets energy calculation needs.

To charge a 12V battery with a capacity of 100 amp-hours in five hours, you need at least 240 watts from your solar panels (20 amps x 12 volts). A 300-watt solar panel or three 100-watt panels are recommended. This setup ensures efficient charging and meets energy calculation needs.

Calculate Energy Needs: Identify your daily energy consumption in kilowatt-hours (kWh) and determine the required solar panel output based on sunlight hours in your location. Assess Battery Specifications: Choose the right battery type (e.g., lead-acid, lithium-ion) and assess its capacity in.

How to calculate charging time of battery by solar panel?

Divide the battery's watt-hours by the panel's wattage, then add 20% to account for power loss. Convert battery capacity from Ah to Wh by multiplying with voltage. Factor in 20-30% efficiency loss from heat, wiring, and controllers. Panel.

To charge a 12V battery with a capacity of 100 amp-hours in five hours, you need at least 240 watts from your solar panels (20 amps x 12 volts). A 300-watt solar panel or three 100-watt panels are recommended. This setup ensures efficient charging and meets energy calculation needs effectively. It.

That is why a solar panel charge time calculator is necessary to turn complex energy data into an easily usable estimate for even the layman, so that they can be ensured to be using their equipment as efficiently and as accurately as possible. What Affects Solar Battery Charging Time?

Several.

With a 200W solar panel at 85% efficiency, the panel delivers 170W. Divide 600Wh by 170W and you'll get about 3.5 hours of full sunlight. Enter your battery capacity. You can use Ah or Wh. If you use Ah, also enter the battery voltage. Add



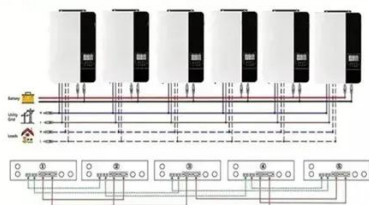
your panel wattage. Enter system efficiency (if you're.

Solar panel charging harnesses the power of sunlight to convert energy into electricity, using photovoltaic cells that absorb sunlight and generate a flow of electrons. This eco-friendly process is widely used in residential, commercial, and portable applications, reducing reliance on traditional.



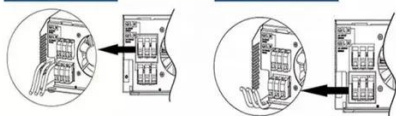
## Solar panel charging wattage

Parallel (Parallel operation up to 6 unit (only with battery connected))



AC input wires

AC output wires



### [How many watts of solar panels are used for charging](#)

For example, a standard 12-volt battery typically needs 50-100 watts of solar power to charge effectively. The exact wattage may vary based on specific use cases, solar ...



### [How Many Solar Panel Watts for 12V Battery Charging: A ...](#)

To charge a 12V battery with a capacity of 100 amp-hours in five hours, you need at least 240 watts from your solar panels (20 amps x 12 volts).

## Solar Panel Charge Time Calculator

In order to calculate how long it takes for your solar battery to be charged, you need to first start with the following key data. 1. Wattage of solar panel (W)



## Solar Panel Charge Time Calculator: Accurately Estimate How ...

Panel wattage: The wattage of a solar panel determines how quickly it can supply energy. If the panel's wattage is high, it can send energy to the battery more quickly, and vice ...



A 300-watt solar panel or three ...

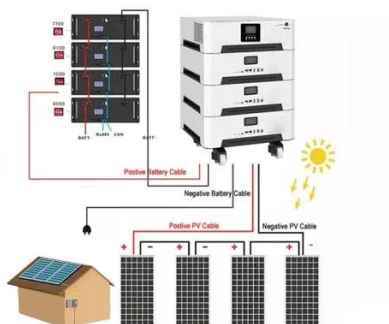


### [How to Calculate Charging Time of Battery by Solar Panel](#)

Whether you're powering up a home system or a weekend camper, knowing the math behind charging time saves you stress--and surprises. Let's break it down into simple ...

### [Solar Panel Charging Time Calculator](#)

Easily find out how long your solar panels take to charge any battery. Use our free solar panel charging time calculator for fast and accurate results.



### [How Much Energy Does A Solar Panel Produce? , EnergySage](#)

About 97% of home solar panels installed in 2025 produce between 400 and 460 watts, based on thousands of quotes from the EnergySage Marketplace. But wattage alone ...



## How to Calculate Solar Panel for Battery Charging: A Step-by ...

To size a solar panel for battery charging, assess the battery capacity in amp-hours (Ah) and calculate daily energy needs in watt-hours. Factor in charging efficiency losses ...



## [How to Calculate Charging Time of Battery by ...](#)

Whether you're powering up a home system or a weekend camper, knowing the math behind charging time saves you stress--and ...

## [How Many Solar Panels Does It Take To Charge an EV?](#)

Solar panel outputs range from 250 to 400 Watts, but these days it's pretty rare for an installer in the solar network to offer anything less than 360 Watts. In fact, 400W is ...



## Solar Panel Charge Time Calculator

This is a free online solar panel calculator that helps you determine how long it would take your solar panel to charge your battery.



## Contact Us

---

For inquiries, pricing, or partnerships:

<https://www.sccd-sk.eu>

Phone: +32 2 808 71 94

Email: [info@sccd-sk.eu](mailto:info@sccd-sk.eu)

Scan QR code for WhatsApp.

