



# Solar panels connect to multiple on-site energy sources





## Overview

---

Today's integrated systems seamlessly blend multiple clean energy sources, automatically switching between solar, battery power, and grid electricity to optimize both performance and savings.

Today's integrated systems seamlessly blend multiple clean energy sources, automatically switching between solar, battery power, and grid electricity to optimize both performance and savings.

Transform your home into a clean energy powerhouse by integrating residential solar panels with smart energy management systems. Modern renewable integration unlocks unprecedented control over your household energy consumption while significantly reducing utility bills. By combining solar power.

Solar systems integration involves developing technologies and tools that allow solar energy onto the electricity grid, while maintaining grid reliability, security, and efficiency. For most of the past 100 years, electrical grids involved large-scale, centralized energy generation located far from. How to connect multiple solar panels to each other?

Once your solar panels are well-prepared for wiring, go ahead. It is time to link multiple solar panels to each other. Connecting the positive terminals of all panels together and repeating the same for the negative terminals will help you establish a parallel connection.

How can solar energy be integrated?

By 2030, as much as 80% of electricity could flow through power electronic devices. One type of power electronic device that is particularly important for solar energy integration is the inverter. Inverters convert DC electricity, which is what a solar panel generates, to AC electricity, which the electrical grid uses.

Can you connect two solar panels to a power station?

Don't connect two panels with built-in charge controllers: The panels you combine can't have solar charge controllers. If they do, they must first be bypassed. The combination of panels can then be connected to a charge controller or a power



station. Do power stations by X come with solar panels?

.

Do solar panels need a parallel connection?

The voltage remains the same in a parallel connection, whereas the total current adds up (increases). If you need a larger current while keeping the voltage the same, use a parallel connection to wire your solar panels. The voltage, current, and power play a key role in the electricity generation and distribution.



## Solar panels connect to multiple on-site energy sources

---



### [How to Connect Multiple Solar Panels Together](#)

Connecting multiple photovoltaic (PV) panels is the fundamental method for generating sufficient power to run a home, RV, or remote off-grid structure. A single solar ...

### [7 Ways to Integrate Solar with Other Energy ...](#)

Discover 7 smart strategies to maximize solar power by integrating it with wind, battery storage, hydroelectric, geothermal & other renewable ...



### [Solar Panel Wiring Basics: How to Wire Solar Panels](#)

While wiring solar panels in parallel, the positive terminals of different solar panels are linked together. The same is the case with the negative terminals of these panels. The voltage ...

### **Smart Solar: How to Seamlessly Connect Your Panels with Other ...**

Today's integrated systems seamlessly blend multiple clean energy sources, automatically switching between solar, battery power, and grid



electricity to optimize both ...



## 7 Ways to Integrate Solar with Other Energy Sources That Maximize Power

Discover 7 smart strategies to maximize solar power by integrating it with wind, battery storage, hydroelectric, geothermal & other renewable sources for reliable year-round energy. The big ...

## [Smart Solar: How to Seamlessly Connect Your ...](#)

Today's integrated systems seamlessly blend multiple clean energy sources, automatically switching between solar, battery power, ...



## [A Simple Guide on How to Wire 2 Solar Panels Together](#)

In this article, we'll dive into the nitty-gritty of connecting two solar panels. You'll learn about the different wiring configurations--series and parallel--and how each affects ...



## How to Connect Multiple Solar Panels to Maximize Your Energy ...

There are mainly two types of connections for solar panels: series and parallel. Each has its own advantages, and it's important to choose the one that best suits your configuration. ...

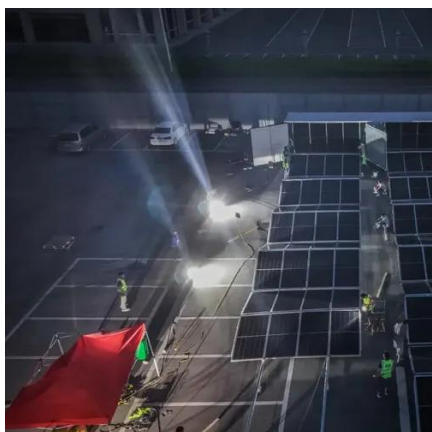


## Solar Systems Integration Basics

Increased solar and DER on the electrical grid means integrating more power electronic devices, which convert energy from one form to another.

## How to Connect Multiple 300W Solar Panels for Higher Energy ...

Connecting multiple 300W solar panels helps you harness more solar power, which means you can generate more electricity. Whether you're powering an entire building or ...



## [How to connect two or multiple solar panels ...](#)

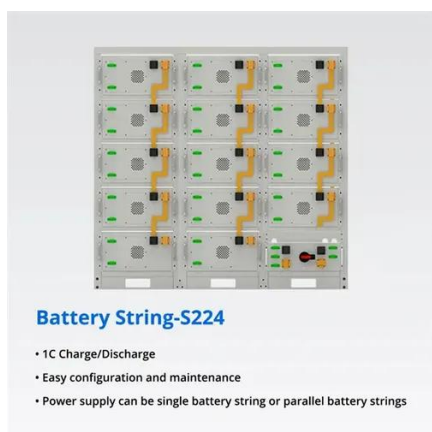
Wondering how to connect solar panels together or even how to connect multiple solar panels together? In this guide, we'll explore ...



## Solar Panel Wiring Basics: How to Wire Solar Panels

While wiring solar panels in parallel, the positive terminals of different solar panels are linked together. The same is the case with the negative

...



## How to Connect Two or More Solar Panels Together

Connecting multiple solar panels together can enhance the efficiency and power output of your solar power system. This can be done in three primary configurations: parallel, ...

## How to connect two or multiple solar panels together

Wondering how to connect solar panels together or even how to connect multiple solar panels together? In this guide, we'll explore three common wiring methods--series, ...





## Contact Us

---

For inquiries, pricing, or partnerships:

<https://www.sccd-sk.eu>

Phone: +32 2 808 71 94

Email: [info@sccd-sk.eu](mailto:info@sccd-sk.eu)

Scan QR code for WhatsApp.

