



# Solar power inverter can be connected to 220v





## Overview

---

Do I need a solar inverter?

That's why you'll need a solar inverter to convert direct current to alternating (AC). An off-grid inverter has a socket that you can plug your appliances in just like if it were a wall outlet at home. Normally, you don't directly connect solar panels to inverter.

What is a 220V power inverter?

A 220 volt power inverter converts direct current to conventional alternating current. It can be used to run electronic equipment when there is no normal power supply. Sam Stores stocks a wide range of power inverters to match your needs.

How do I get 220V from a 110 volt inverter?

You would have to get a step-up transformer (perhaps auto-wound for lower costs) to get 220 from a 110 inverter. Re: 220v from two inverters?

Aloha, Can I parallel two of the same MSW inverters @ 110v each and get 220v single phase?

If so, then would I tie the two neutrals together?

Reference my system below. thanks.

How to connect solar panels to inverter in an off-grid system?

Battery to inverter: Connect the battery to the inverter using thick battery cables, keeping the distance short and checking the inverter manual for any required fuses or circuit breakers. Disclaimer: This article only covers the basics of how to connect solar panels to inverter in an off-grid system.



## Solar power inverter can be connected to 220v

---



### [How to Connect Solar Panel to Inverter](#)

Learn how to properly connect a solar panel to an inverter with this step-by-step guide. Discover different inverter types, wiring tips, and ...

### Best 24V to 220V Power Inverters for Home, RV, and Solar Systems

Choosing the right power inverter 24V to 220V is crucial for efficient energy conversion and reliable power supply in various settings such as homes, RVs, trucks, and off ...



### How to connect solar panels to inverter and battery in 3 steps

This guide explains how to connect solar panels to an inverter safely and effectively. We'll also discuss factors like inverter capacity to help you determine how many ...

### solar panel to plug into 220v socket: instructions for use in 5 ...

Solar panels with micro-inverters are designed to be easy to install, but caution is still required. By following these steps, you should be able to



connect your solar panel to your 220V socket ...



### [How to Connect a Solar Panel to an Inverter](#)

Connect the inverter's AC output to your home's electrical panel via a dedicated circuit breaker to prevent overloads. Consult a licensed electrician for safety.

### **How to connect solar power to 220V**

When aiming to connect solar power to a 220V system, it is essential to convert the DC output from solar panels into alternating current (AC) electricity. The inverter plays a ...



### **EDECOA Hybrid Solar Inverter 3200W 24V to 220V Pure Sine ...**

Features All in one inverter: DC 24V to AC 220V hybrid inverter, built-in MPPT solar charge controller, battery charger, compatible with a wide range of battery types, compatible with PV ...



## [solar panel to plug into 220v socket: instructions ...](#)

Solar panels with micro-inverters are designed to be easy to install, but caution is still required. By following these steps, you should be able to ...



## [Best 24V to 220V Power Inverters for Home, RV, ...](#)

Choosing the right power inverter 24V to 220V is crucial for efficient energy conversion and reliable power supply in various settings ...

## [Best Power Inverters 24V to 220V for Reliable AC Conversion](#)

It supports both 12V and 24V DC inputs and outputs stable 220V AC sinusoidal power with over 90% conversion efficiency, reducing power loss. The inverter includes multiple ...



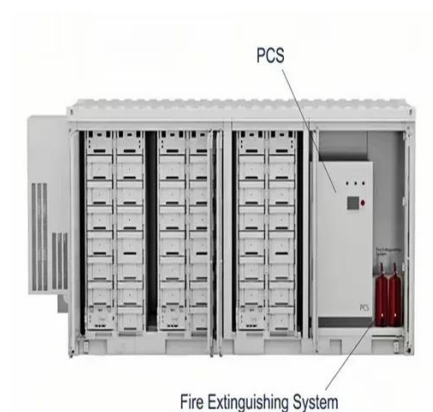
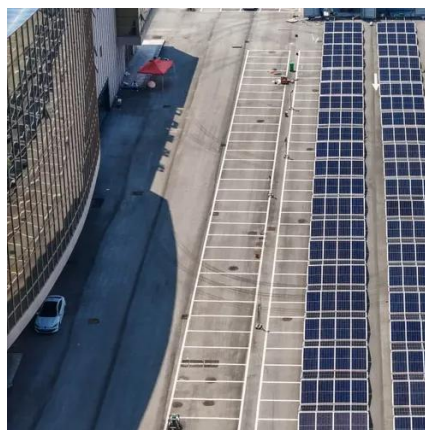
## [Can a 220v inverter be used with solar panels?](#)

So, to sum it up, a 220v inverter can definitely be used with solar panels. But you need to carefully consider factors like compatibility, battery requirements, efficiency, safety ...



## [How to convert solar panels to 220V wiring , NenPower](#)

Conversion of solar panels to 220V wiring involves several critical steps, including determining the solar panel specifications, selecting the appropriate inverter, proper wiring ...



## [How to Connect Solar Panel to Inverter](#)

Learn how to properly connect a solar panel to an inverter with this step-by-step guide. Discover different inverter types, wiring tips, and maintenance advice.

## [Best Power Inverters 24V to 220V for Reliable AC ...](#)

It supports both 12V and 24V DC inputs and outputs stable 220V AC sinusoidal power with over 90% conversion efficiency, reducing ...



## [How to convert solar panels to 220V wiring](#)

Conversion of solar panels to 220V wiring involves several critical steps, including determining the solar panel specifications, ...



## Contact Us

---

For inquiries, pricing, or partnerships:

<https://www.sccd-sk.eu>

Phone: +32 2 808 71 94

Email: [info@sccd-sk.eu](mailto:info@sccd-sk.eu)

Scan QR code for WhatsApp.

