



Solar power station energy storage operation mode





Overview

Here, we'll offer you a complete guide on how to choose the right operating mode for an energy storage system. This is an important task as it directly affects your ROI and payback period. So, let's explore the working modes in various scenarios with the example of.

Here, we'll offer you a complete guide on how to choose the right operating mode for an energy storage system. This is an important task as it directly affects your ROI and payback period. So, let's explore the working modes in various scenarios with the example of.

Different operational models can determine whether storage enhances grid stability, prevents congestion, or primarily serves market-driven objectives. To maximize the benefits of battery storage for the power grid, three distinct operational strategies have emerged: Storage systems operate without.

In the context of increasing renewable energy penetration, energy storage configuration plays a critical role in mitigating output volatility, enhancing absorption rates, and ensuring the stable operation of power systems. This paper proposes a benefit evaluation method for self-built, leased, and.

Here, we'll offer you a complete guide on how to choose the right operating mode for an energy storage system. This is an important task as it directly affects your ROI and payback period. So, let's explore the working modes in various scenarios with the example of Innotinum inverter products. One.

Energy storage operation modes can be categorized in various ways, emphasizing distinct functionalities and applications within energy systems. 1. Energy storage can operate in charge, discharge, and idle mode s, defining the processes for storing and releasing energy. 2. Each operational state.

How to choose the right operating mode for energy storage systems One of the key benefits of the modular ZenergiZe battery storage solution is its flexibility. Depending on the application, and the available power source, energy storage systems can be used either as a sole source of power or to.

This article provides a practical guide to selecting the optimal operating mode for



your Yohoo Elec energy storage inverter—helping you maximize the value of your solar + storage system. Before diving into mode selection, it's important to understand the pain points that residential solar systems.



Solar power station energy storage operation mode



Energy Storage Configuration and Benefit Evaluation Method for ...

This comprehensive evaluation framework addresses a critical gap in existing research, providing stakeholders with quantitative references to guide the selection of storage ...

How to Choose the Best Working Mode for Your Home Energy Storage ...

Learn how to select the optimal working mode for your home energy storage system using Yohoo Elec's smart inverter solutions. Maximize solar usage, save on electricity ...



What are the energy storage operation modes?

The effectiveness and efficiency of energy storage systems are significantly influenced by their operation modes. Each mode--charge, ...

How to Choose the Right Operating Mode for an Energy Storage ...

Here, we'll offer you a complete guide on how to choose the right operating mode for an energy storage system. This is an important task as it



directly affects your ROI and ...



How to Choose the Right Operating Mode for Your Home Energy ...

In this guide, we'll walk you through how to select the best operating mode for your Growatt inverter--whether you're aiming for energy savings, backup power, or revenue ...



How to choose the right operating mode for energy storage ...

Depending on the application, and the available power source, energy storage systems can be used either as a sole source of power or to enable smart load management to help balance ...



How to Choose the Right Operating Mode for Your Home Energy Storage ...

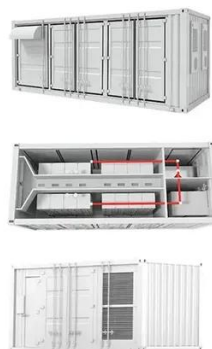
In this guide, we'll walk you through how to select the best operating mode for your Growatt inverter--whether you're aiming for energy savings, backup power, or revenue ...





Energy storage in the grid: Key operational modes and how they ...

To maximize the benefits of battery storage for the power grid, three distinct operational strategies have emerged: Storage systems operate without impacting overall grid ...

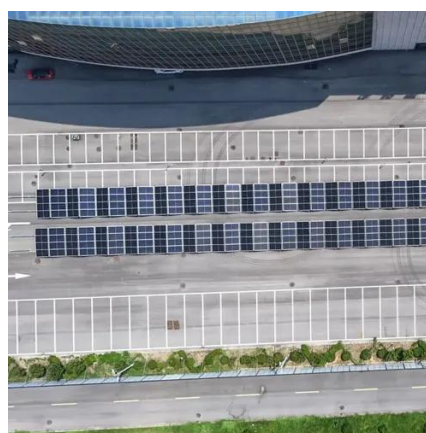


The Essential Guide to Photovoltaic Energy Storage Station Operation

Ever wondered how solar farms keep your lights on when the sun clocks out? Enter photovoltaic energy storage stations - the unsung heroes of renewable energy. These facilities combine ...

[What are the energy storage operation modes? , NenPower](#)

The effectiveness and efficiency of energy storage systems are significantly influenced by their operation modes. Each mode--charge, discharge, and idle--carries ...



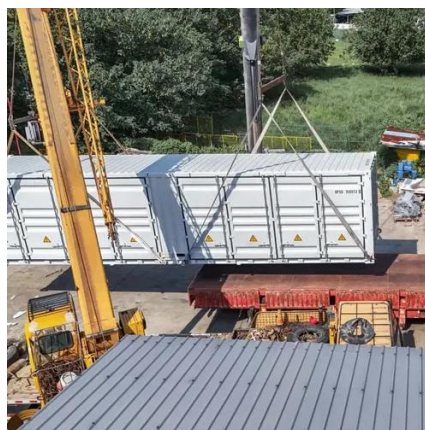
Understanding the Operation Modes of Energy Storage Power ...

From grid-scale applications to industrial microgrids, understanding storage operation modes helps maximize energy efficiency. As renewable penetration increases, these systems will ...



[How to Choose the Right Operating Mode for an ...](#)

Here, we'll offer you a complete guide on how to choose the right operating mode for an energy storage system. This is an important ...



Multi-functional energy storage system for supporting solar PV ...

BESS can operate in real and reactive power modes simultaneously. BESS can help solve critical operational problems for power distribution grid. BESS can reduce ...



Contact Us

For inquiries, pricing, or partnerships:

<https://www.sccd-sk.eu>

Phone: +32 2 808 71 94

Email: info@sccd-sk.eu

Scan QR code for WhatsApp.

