



Square specifications of solar panels





Overview

A typical residential solar panel measures about 65 inches by 39 inches (roughly 5.4 feet by 3.25 feet), though slight variations exist between manufacturers. These standard dimensions provide approximately 15 square feet of surface area per panel.

A typical residential solar panel measures about 65 inches by 39 inches (roughly 5.4 feet by 3.25 feet), though slight variations exist between manufacturers. These standard dimensions provide approximately 15 square feet of surface area per panel.

Panel “Size” vs Physical Dimensions: The most critical distinction for homeowners is that solar panel “size” refers to electrical output (measured in watts), not physical measurements. A 400W panel has the same physical footprint whether it produces 350W or 450W – the difference lies in cell.

Learning about the types of solar panels, their common dimensions, configurations, and solar installation tips will help you choose and design an efficient system for your home or business. Let’s take a closer look at solar system sizes and dimensions. A solar panel is a device designed to convert.

These are the squared or rounded silicon photovoltaic cells encased in glass with a metal frame. We can divide traditional solar panels into commercial and residential panels. One immediate difference you’ll notice is that commercial panels are larger than residential panels. Commercial projects.

Solar panel size ranges from 250W to 450W for residential solar panels. Refers to the total amount of power a solar panel can generate over a period of time. This is usually calculated by multiplying the panel voltage by the amperage. Solar cell dimensions are typically around 189 x 100 x 3.99cm.

Whenever you want to find out what the standard solar panel sizes and wattages are, you encounter a big problem: There is no standardized chart that will tell you, for example, “A typical 300-watt solar panel is this long and this wide.” If you want to calculate how many solar panels you can put on.

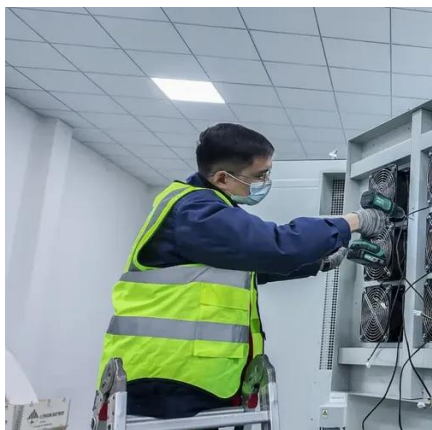
Choosing the right solar panel size can feel like a puzzle, as it is a key part of how



solar energy works. Roof shapes, power goals, and budget lines all shift the pieces. Yet a few clear numbers turn that puzzle into a simple plan. This guide puts those numbers front and center, from the standard.



Square specifications of solar panels

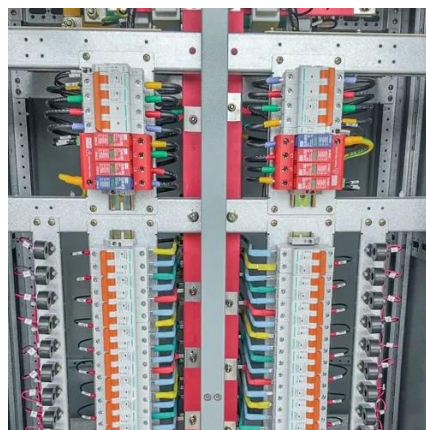


[Solar Panel Size & Dimensions Guide 2025 _Complete Specs](#)

Complete guide to solar panel sizes and dimensions. Compare 60-cell vs 72-cell panels, weights, roof space requirements, and installation specs for 2025.

Understanding the Specifications of Solar Panels and How to ...

In this guide, we'll help you understand the specifications of solar panels while also teaching you how to read them. Gaining a thorough understanding of the specifications of ...



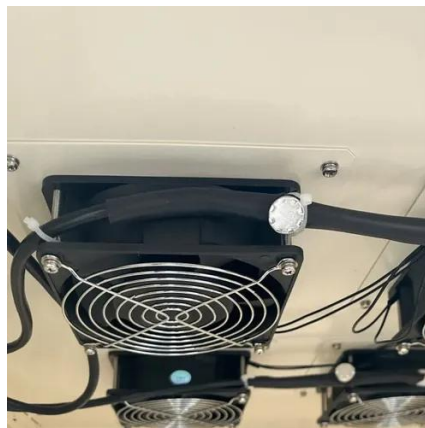
[Standard Solar Panel Sizes And Wattages \(100W-500W ...](#)

Alright, let's have a look at the length and width of typical solar panels, with wattage (very important), and complete with area or square footage (useful when calculating how many solar ...



[How To Read A Solar Panel Spec Sheet: A Complete Guide](#)

Learn how to read a solar panel spec sheet to compare manufacturers, calculate efficiency, and determine the best panels for your project.



[2025 Solar Panel Specs Guide: Choose the Best Panels](#)

This guide breaks down 18 key solar panel specifications in plain English, complete with a handy comparison table and practical tips to help you choose the perfect panel.



[Guide to Solar Panel Sizes & Dimensions \(October 2025\)](#)

Discover which solar panel sizes and dimensions are the most common in the UK, as well as which size is the best for your home.



[How To Read A Solar Panel Spec Sheet: A ...](#)

Learn how to read a solar panel spec sheet to compare manufacturers, calculate efficiency, and determine the best panels for ...





[Detailed Guide to Solar Panel Size & Dimensions](#)

Choosing the proper system is not only about the solar panel dimensions. You should also consider wattage, number of cells, layout ...

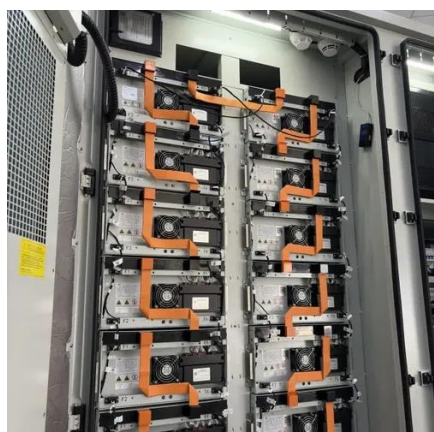


[Solar Panel Size Guide , Best Panel Size for Your Roof](#)

Learn how to choose the ideal solar panel size for your home. Get expert tips, standard dimensions, and a size chart to simplify your solar decisions.

[Perfect Solar Panel Sizes for Your Home \(Expert Sizing Guide\)](#)

These standard dimensions provide approximately 15 square feet of surface area per panel. Weight is another crucial consideration for rooftop installations. Most residential ...



[Solar Panel Size Guide \(with 4 Charts\)](#)

Solar panel sizes are measured in two ways: watt output and physical dimensions. Physical dimensions refer to the height, length and width of the solar array. The wattage refers to how ...



[Detailed Guide to Solar Panel Size & Dimensions](#)

Choosing the proper system is not only about the solar panel dimensions. You should also consider wattage, number of cells, layout possibilities, and energy consumption. ...





Contact Us

For inquiries, pricing, or partnerships:

<https://www.sccd-sk.eu>

Phone: +32 2 808 71 94

Email: info@sccd-sk.eu

Scan QR code for WhatsApp.

