



# Stockholm Integrated Project Energy Storage





## Overview

---

Beccs Stockholm is Swedish district energy provider Stockholm Exergi's large-scale BECCS (Bio-Energy Carbon Capture and Storage) facility that is now under construction. Stockholm Exergi will build one of the world's largest facilities for capture and permanent storage .

Beccs Stockholm is Swedish district energy provider Stockholm Exergi's large-scale BECCS (Bio-Energy Carbon Capture and Storage) facility that is now under construction. Stockholm Exergi will build one of the world's largest facilities for capture and permanent storage .

We are creating a world-class, full-scale plant for carbon removal at Stockholm Exergi's existing heat and power biomass plant in the heart of Stockholm! Beccs Stockholm is Swedish district energy provider Stockholm Exergi's large-scale BECCS (Bio-Energy Carbon Capture and Storage) facility that is.

The European Investment Bank (EIB) has granted a loan of €260 million to Stockholm Exergi for the construction of Sweden's first large-scale bioenergy plant with carbon capture and storage (BECCS). Beccs Stockholm, which will begin construction at Värtaverket, is expected to be fully operational in.

Everllence has been chosen by EPC contractor SAIPEM to deliver the core compressor and expander technology for Stockholm Exergi's Bioenergy with Carbon Capture and Storage (BECCS) project at the Värtaverket biomass power plant. The initiative is one of the world's largest bioenergy-based CCS.

An artist's rendering of Stockholm Exergi's BECCS facility (image courtesy Stockholm Exergi). In Sweden, municipal energy company Stockholm Exergi AB has announced that it will go ahead and invest around SEK 13 billion (≈ EUR 1.2 billion) to build one of the world's largest facilities for the.

Stockholm Exergi has announced its decision to construct one of the world's largest facilities dedicated to capturing and permanently storing biogenic carbon dioxide, marking a major breakthrough in global efforts to scale up carbon removals. The SEK 13 billion investment aims to support Sweden and.

Stockholm Exergi announced its decision to build one of the world's largest



facilities for capture and permanent storage of biogenic carbon dioxide. The investment decision marks a major milestone in enabling permanent removals and will help Sweden and the EU reach their long-term climate goals. What is Stockholm Exergi's bio-CCS project?

Stockholm Exergi's landmark bio-CCS project Stockholm Exergi has secured government funding of over SEK 20 billion in the Swedish Energy Agency's reverse auction to develop a bio-CCS (bioenergy with carbon capture and storage) facility.

How much does Stockholm Exergi invest?

Stockholm Exergi AB to invest around SEK 13 billion ( $\approx$  EUR 1.2 billion) and build one of the world's largest bioenergy with carbon capture and storage (BECCS) facilities.

When does Stockholm Exergi start construction?

With the decision, Stockholm Exergi is starting the construction phase immediately with the goal of having the bioenergy with carbon capture and storage (BECCS) facility operational in 2028. This is a historic moment for Stockholm Exergi and for the climate transition.

Does Stockholm Exergi have a BECCS facility?

An artist's rendering of Stockholm Exergi's BECCS facility (image courtesy Stockholm Exergi).



## Stockholm Integrated Project Energy Storage

---



### **Stockholm Exergi to build major bio-ccs facility for CO<sub>2</sub> removal**

Stockholm Exergi has announced its decision to construct one of the world's largest facilities dedicated to capturing and permanently storing biogenic carbon dioxide, ...

### **HyperStrong accelerates European expansion in Sweden and ...**

HyperStrong has announced major breakthroughs in the European market with two projects commissioned in Sweden and Germany. In May 2024, the company kicked off its first ...



### **Sweden: EIB finances ground-breaking carbon capture plant in Stockholm**

The European Investment Bank (EIB) has granted a loan of EUR260 million to Stockholm Exergi for the construction of Sweden's first large-scale bioenergy plant with carbon ...

### **[Sweden Awards Stockholm Exergi \\$1.8 Billion for ...](#)**

Stockholm Exergi has secured government funding of over SEK 20 billion in the Swedish Energy Agency's reverse auction to ...



## Stockholm Exergi to Build One of the World's Largest Facilities for

capture and permanent storage of biogenic carbon dioxide. The investment amounts to ...

## BECCS

The Beccs Stockholm project will create a world-class, full-scale Bio-Energy Carbon Capture and Storage (BECCS) facility at its existing heat and power biomass plant in ...



## [Sweden: EIB finances ground-breaking carbon ...](#)

The European Investment Bank (EIB) has granted a loan of EUR260 million to Stockholm Exergi for the construction of Sweden's first ...





## [Green light for Sweden's largest BECCS project](#)

The BECCS facility will be built in the Energy Port near Värtaverket in Stockholm. When completed, it will capture and permanently store 800,000 tonnes of biogenic carbon ...

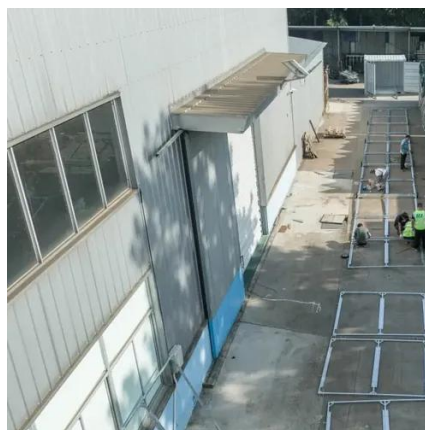


## [HyperStrong accelerates European expansion in ...](#)

HyperStrong has announced major breakthroughs in the European market with two projects commissioned in Sweden and ...

## **Stockholm Exergi to Build One of the World's Largest Carbon ...**

The project, called Beccs Stockholm, will be built at the city's energy port near the Värtaverket power plant, which already generates electricity and heat from wood waste. CO<sub>2</sub> ...



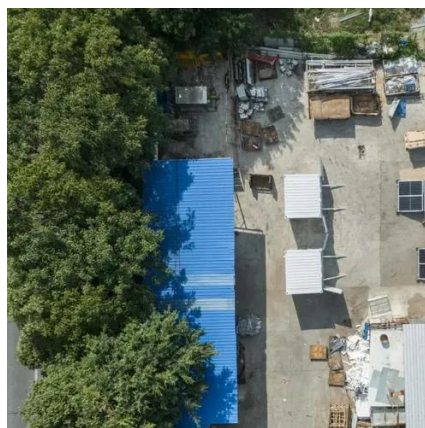
## [Sweden and Norway Launch CCS Infrastructure ...](#)

Stockholm Exergi has initiated construction of a significant Carbon Capture and Storage (CCS) facility at the Värtaverket district in Stockholm. The ...



## Sweden Awards Stockholm Exergi \$1.8 Billion for Bio-energy ...

Stockholm Exergi has secured government funding of over SEK 20 billion in the Swedish Energy Agency's reverse auction to develop a bio-CCS (bioenergy with carbon ...



## Sweden and Norway Launch CCS Infrastructure Targeting 5 Mt ...

Stockholm Exergi has initiated construction of a significant Carbon Capture and Storage (CCS) facility at the Värtaverket district in Stockholm. The project aims to capture around 800,000 ...

## [Green light for Sweden's largest BECCS project](#)

The BECCS facility will be built in the Energy Port near Värtaverket in Stockholm. When completed, it will capture and ...



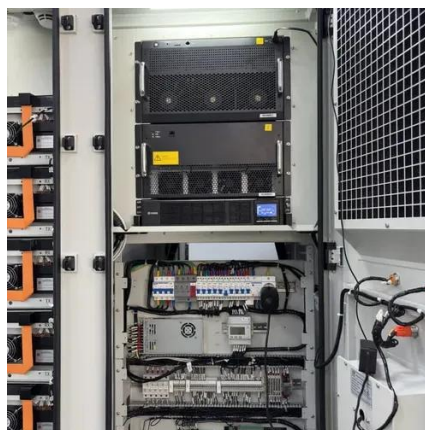
## [Stockholm Exergi to Build One of the World's ...](#)

Stockholm Exergi announced its decision to build one of the world's largest facilities for capture and permanent storage of biogenic ...



## [Stockholm Exergi to build major bio-ccs facility for ...](#)

Stockholm Exergi has announced its decision to construct one of the world's largest facilities dedicated to capturing and ...



## **Everllence Technology selected for Stockholm Bbo-energy CCS ...**

Everllence has been chosen by EPC contractor SAIPEM to deliver the core compressor and expander technology for Stockholm Exergi's Bioenergy with Carbon Capture ...



## Contact Us

---

For inquiries, pricing, or partnerships:

<https://www.sccd-sk.eu>

Phone: +32 2 808 71 94

Email: [info@sccd-sk.eu](mailto:info@sccd-sk.eu)

Scan QR code for WhatsApp.

