



Super high-rise roof solar panels

GRADE A BATTERY

LiFePO₄ battery will not burn when overcharged, over discharged, overcurrent or short circuit and can withstand high temperatures without decomposition.





Overview

The elevated design structure, also known as a high-rise solar module mounting structure, improves solar efficiency while using less amount of roof space. Solar panels are placed at a height of 6 to 8 feet above ground level.

The elevated design structure, also known as a high-rise solar module mounting structure, improves solar efficiency while using less amount of roof space. Solar panels are placed at a height of 6 to 8 feet above ground level.

Depending on the height of the solar roof mounting system to be installed, it is classified as follows: In this solar structure, panels are mounted on the rooftop with a ground clearance of fewer than 1m, at the lowest point of the panel. This is the structure with the least amount of metal.

This shift represents an opportunity for residential solar installers to future-proof and oversize rooftop PV system designs using ultra-high efficiency and extremely durable solar panels for long-term reliability. Installers can meet these demands by leveraging advanced technologies like n-type.

As urban landscapes continue to grow vertically, integrating sustainable energy solutions like solar power into high-rise buildings has become both a necessity and a challenge. While solar energy offers significant environmental and financial benefits, implementing it in tall structures presents.

Installing solar panels on the roof of a high-rise building involves several critical factors: 1. Site assessment, 2. Structural evaluation, 3. Compliance with regulations, 4. Professional installation. A comprehensive site assessment is crucial before any installation. This step includes examining.

Solar Costs Have Reached Historic Lows: Average residential solar costs have dropped to \$3.00-\$3.30 per watt in 2025, representing a 60% decrease from 2010 levels. Combined with the 30% federal tax credit extended through 2032, most homeowners can achieve payback periods of 6-12 years with 25+.

Solar elevated structures with walkways for cleaning and maintenance purpose ideal for residential and commercial installations Heavy-duty, durable, cost-effective. Designed for performance and utility. customised design solar structures



solar module mounting structures Ideal for high rise super.



Super high-rise roof solar panels



[How to install solar panels on the roof of a high-rise ...](#)

Installing solar panels on the roof of a high-rise building involves several critical factors: 1. Site assessment, 2. Structural ...

Solar Panels for High-Rise Apartments: Efficient Installation

As cities grow taller and greener, solar panels in high-rise apartments will no longer be optional--they'll be essential. The challenge isn't whether we can install them, but ...

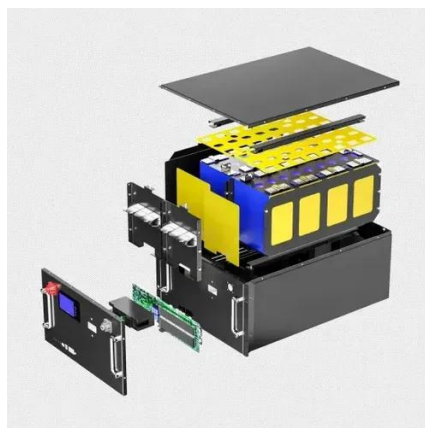


[Rooftop Solar Panels: The Ultimate Buying Guide](#)

Find out what benefits coming into possession of excess power can have, how it operates, and what sorts of rooftop systems are available. This in-depth guide will help you ...

ARS SkyDeck(TM)

With RapidFix, you get a system that maximizes rooftop solar without compromising your building envelope. From faster installations to secure, non-penetrating stability, it's the smart way to ...



How to install solar panels on the roof of a high-rise building

Installing solar panels on the roof of a high-rise building involves several critical factors: 1. Site assessment, 2. Structural evaluation, 3. Compliance with regulations, 4. ...



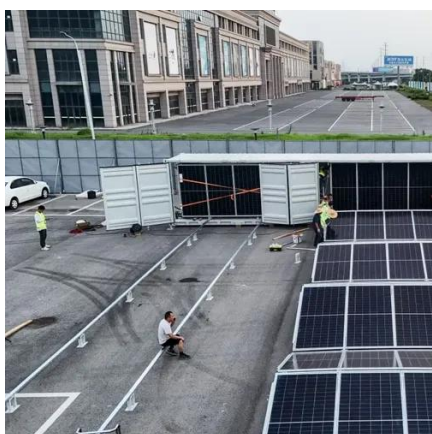
[The Complete Guide to Rooftop Solar Power in 2025](#)

Everything you need to know about rooftop solar power in 2025. From costs and savings to installation and maintenance - your complete guide to home solar panels.



[Preparing for Super-Oversized Rooftop PV Systems: Why N ...](#)

The high efficiency and durability of Vertex S+ n-type TOPCon modules make them uniquely suited to address the challenges created by oversized residential solar PV ...





High-rise building

Custom-designed rooftop systems that maximise generation and payback. We specify high-efficiency modules and quality mounting to suit your roof, orientation and budget. All installs ...



Solar Energy for High-Rise Buildings: Challenges ...

By adopting technologies like BIPV, vertical solar panels, and advanced energy storage, high-rise buildings can significantly reduce ...

Solar Powered Roof Tiles

Install Solar Roof and power your home with a fully integrated solar and energy storage system. The glass solar tiles and steel roofing tiles look great up close and from the street, ...



Solar Energy for High-Rise Buildings: Challenges and Solutions

By adopting technologies like BIPV, vertical solar panels, and advanced energy storage, high-rise buildings can significantly reduce their carbon footprint and contribute to ...



High-Rise Solar Module Mounting Structure , Benefits & Types

The elevated design structure, also known as a high-rise solar module mounting structure, improves solar efficiency while using less amount of roof space. Solar panels are ...





Contact Us

For inquiries, pricing, or partnerships:

<https://www.sccd-sk.eu>

Phone: +32 2 808 71 94

Email: info@sccd-sk.eu

Scan QR code for WhatsApp.

