



Swaziland 5g solar container communication station query

Warranty
10 years

LiFePO₄

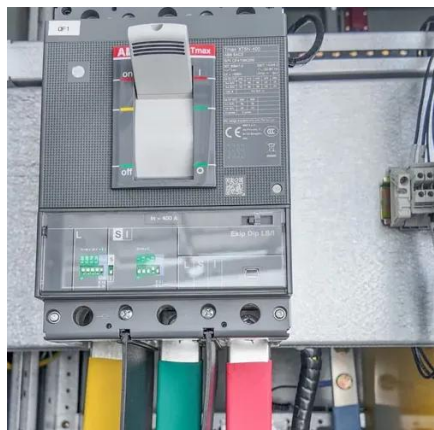
Intelligent BMS

Wide Temp:
-20°C to 55°C





Swaziland 5g solar container communication station query



[Swaziland 5G Enterprise Market \(2024-2030\) , Trends, Outlook](#)

Historical Data and Forecast of Swaziland 5G Enterprise Market Revenues & Volume By Communication service provider for the Period 2020-2030 Historical Data and Forecast of ...

[Swaziland Base Station Power Management System](#)

Swaziland Communication Base Station Energy Storage Project A telecom battery backup system is a comprehensive portfolio of energy storage batteries used as backup power for base ...



[Swaziland Communications 5G indoor base station](#)

Can a 16 element indoor base station cover 5G? In this paper, a wideband 16- element indoor base station (BS) antenna array that can cover 3.3-6.0 GHz is proposed for 5G applications.

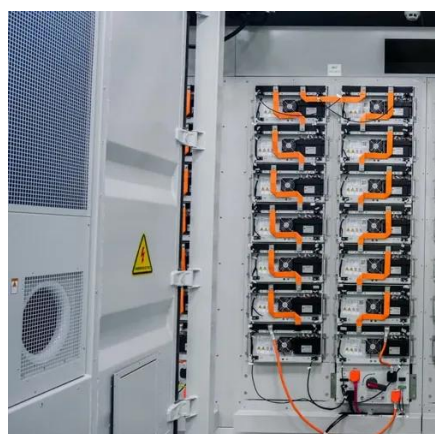


Energy efficiency of wind and photovoltaic power generation ...

It is shown that powering base station sites with such renewable energy sources can significantly reduce energy costs and improve the energy



efficiency of the base station sites in rural areas.



Eswatini Mobile lights up the future

According to Sechula, the initial vision was to roll out 150 5G base stations nationwide. However, the company made a calculated decision to adopt a phased approach, ...

SWAZILAND 5G NETWORK INFRASTRUCTURE MARKET ...

Emerging markets in Africa and Latin America are adopting mobile container solutions for rapid electrification, with typical payback periods of 3-5 years. Major projects now deploy clusters of ...



MTN Eswatini piloting 5G

Mtshali said they had already installed the 5G network for piloting purposes in two base stations, of which one of them is the ...



ESWATINI MOBILE LAUNCHES 5G NETWORK

China Tower and Huawei conducted joint pilot verification in 2018 and found that the 5G Power solution could support effective 5G site deployment without changing the grid, power ...



MTN Eswatini piloting 5G

Mtshali said they had already installed the G network for piloting purposes in two base stations, of which one of them is the Corporate Place in Mbabane. The CEO said a ...

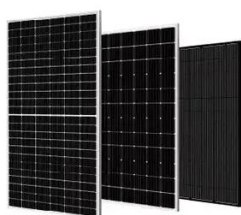
Is the power supply for the communication base station ...

In remote areas or islands where it is difficult to access traditional power grids, solar power supply systems can provide stable power support for power communication base stations, ensuring



Swaziland Communications Engineering Company 5G base ...

The 5G Radio Access Network (RAN) is the interface between user devices and the 5G core network. It comprises base stations and small cells that manage radio ...





Contact Us

For inquiries, pricing, or partnerships:

<https://www.sccd-sk.eu>

Phone: +32 2 808 71 94

Email: info@sccd-sk.eu

Scan QR code for WhatsApp.

