



# T10omni base station communication abnormality





## Overview

---

Note: If the robot continues to emit audible voice alerts or experiences issues with the WiFi connection, please try the troubleshooting steps listed below. Power on/off the robot to reboot it. Press the Reset button to reset the robot and then restart the robot to set it up again.

Note: If the robot continues to emit audible voice alerts or experiences issues with the WiFi connection, please try the troubleshooting steps listed below. Power on/off the robot to reboot it. Press the Reset button to reset the robot and then restart the robot to set it up again.

It is extremely important to understand that different errors indicate different causes. Please refer to the following table for different error codes and their troubleshooting steps. Note: If the robot continues to emit audible voice alerts or experiences issues with the WiFi connection, please.

This topic introduces the concept of base station operation, provides information to help you identify good setup locations, describes best practices for setting up the equipment, and outlines the precautions that you need to take to protect the equipment. Real-Time Kinematic (RTK) operation.

Keep getting communication malfunction between deebot and station. Got this error when I issue the cleaning command. I tried switching off / on the deebot and station and in different orders. I even reset the deebot and did the app scanning part again but still getting this error as soon as the.

Tips of troubleshooting for X10 Pro Omni Base Station (1) Cleaning tray water full or not in place/"Abnormal water level in the base station cleaning tray If you encounter the "Abnormal water level in the base station cleaning tray" error, please. Page 3 Inspect the Sealing Rings on the Omni.

t Multiple Floors?

Can the X10 Pro Omni Save Multiple maximum capacity. A full tank can impede the Omni Station's ability to drain the dirty water effectively. Additionally, if the dirty water tank's seal is not airtight, it may not be able to drain the dirty roperly installed. Please note that.



The app error “Device Connection Problem” occurs whenever the SimpliSafe® Mobile App cannot reach your Base Station. This can happen if the Base Station is not connected to its Wi-Fi or cellular backup\*, or if your smartphone has a poor signal. \*In order for the Base Station to connect to its. Why is my Omni station not working?

Page 8 If none of the above troubleshooting steps can solve the issue, the Omni Station may need to be replaced due to damaged internal parts, such as the solenoid valve and flow meter.

Why is my X10 pro Omni not returning to its Omni station?

If you are experiencing issues with your X10 Pro Omni robotic vacuum cleaner failing to return to its Omni Station, there are several steps you can take to troubleshoot the issue. Page 16 3 □ Verifying Proper Installation of the Omni Station's Extension Board Please make sure that the extension board of the Omni Station has been correctly installed.

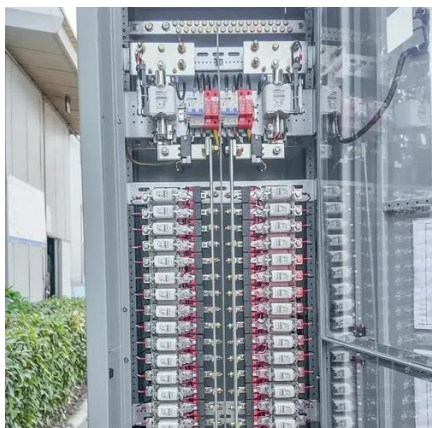
Why is my base station not broadcasting?

The base station is not broadcasting. See Base station is not broadcasting below. Incorrect over-the-air baud rates between base station and rover. Connect to the roving receiver's radio and make sure that it has the same setting as the base station receiver. Mismatched channel or network number selection.



## T10omni base station communication abnormality

---



### Keep getting communication malfunction between deebot and station

I run two different wifi in my home and it seems that the the deebot and the station are connected to different ones. Reset the deebot and made sure they connect to the same ...

### Troubleshooting base station setup and static measurement ...

This section describes some possible station setup and static measurement issues, possible causes, and how to solve them. Trimble recommends that you use the Siteworks or SCS900 ...

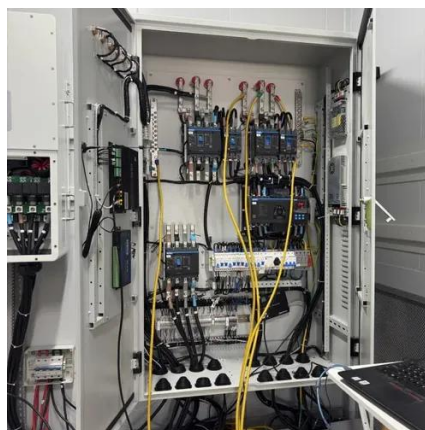


### Troubleshooting base station setup and static measurement ...

This section describes some possible station setup and static measurement issues, possible causes, and how to solve them. Use your field software to restart or configure base and rover ...

## Troubleshooting

This section provides a brief overview of possible problems and causes. Please read this section before you contact Technical support. Dedicated to the world's tomorrow, Trimble is a ...



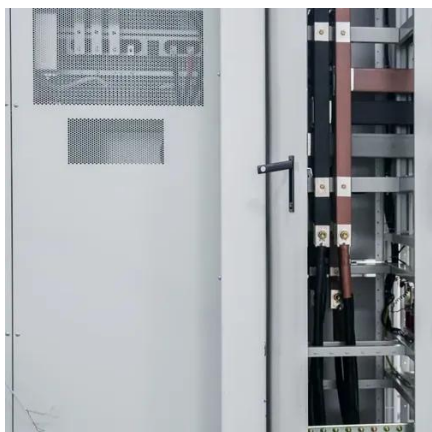
## FAQforeufyProducts FA

This issue may be quickly solved by running the mop-washing task several times to verify if water can be dispensed from the Omni Station, and the reason is that air bubbles may be trapped in ...

## Keep getting communication malfunction between deebot and ...

I run two different wifi in my home and it seems that the the deebot and the station are connected to different ones. Reset the deebot and made sure they connect to the same one solved my ...

**1mwh** (500kw/1mw)  
AIR COOLING  
ENERGY STORAGE CONTAINER



## Base station operation guidelines

Do not set up the base station directly beneath or close to overhead power lines or electrical generation facilities. The electromagnetic fields associated with these utilities can interfere with ...



## **EUFY X10 PRO OMNI FAQ Pdf Download**

When inspecting the Omni Station where the dirty water tank is seated, you should find two sealing rings installed in two distinct locations to ...



### [What Does "Device Connection Problem" Mean and How to ...](#)

The app error "Device Connection Problem" occurs whenever the SimpliSafe® Mobile App cannot reach your Base Station. This can happen if the Base Station is not connected to its Wi-Fi or ...

### [eufy Support , Troubleshooting & Customer Service](#)

It is extremely important to understand that different errors indicate different causes. Please refer to the following table for different error codes and their troubleshooting steps. Note: If the robot ...



### **Troubleshooting base station setup and static measurement ...**

This section describes some possible station setup and static measurement issues, possible causes, and how to solve them. Trimble recommends that you use the Trimble Access ...





[EUFY X10 PRO OMNI FAQ Pdf Download , ManualsLib](#)

When inspecting the Omni Station where the dirty water tank is seated, you should find two sealing rings installed in two distinct locations to guarantee a proper seal.





## Contact Us

---

For inquiries, pricing, or partnerships:

<https://www.sccd-sk.eu>

Phone: +32 2 808 71 94

Email: [info@sccd-sk.eu](mailto:info@sccd-sk.eu)

Scan QR code for WhatsApp.

