



# The base station communication distance is relatively short





## Overview

---

In communications, a base station is a communications station installed at a fixed location and used to communicate as part of one of the following: • a system, or; • a system such as or .

The base station is set up on a known point there is a transmission antenna associated with it through which a radio transmitter sends corrections to a rover. The baselines are typically at 10 to 20 kilometers, which is considerably shorter than DGPS's effective range.

The base station is set up on a known point there is a transmission antenna associated with it through which a radio transmitter sends corrections to a rover. The baselines are typically at 10 to 20 kilometers, which is considerably shorter than DGPS's effective range.

Under some conditions, the range may be only 10-15 miles; for other conditions the range may exceed 200 miles. In planning new installations, or evaluating existing ones, the following guidelines will help estimate what is “par” for different situations. The factors listed below affect.

The base station antennas transmit and receive RF (radio frequency) signals, or radio waves, to and from mobile phones near the base station. Without these radio waves, mobile communications would not be possible. Radio waves have been used for communication for more than 100 years. Radio and.

Base station (or base radio station, BS) is – according to the International Telecommunication Union 's (ITU) Radio Regulations (RR) [1] – a " land station in the land mobile service." A base station is called node B in 3G, eNB in LTE (4G), and gNB in 5G. The term is used in the context of mobile.

Understanding the significance of distance from a base station is critical in wireless communication. This factor directly impacts signal strength, data rates, and overall network performance. This essay explores the nuances of this relationship, covering its technical aspects, practical.

The formulae provided in the image allow us to calculate these variations: The horizontal accuracy of RTK starts at 0.6 cm when the distance from the base station is zero. This base accuracy increases linearly with the distance due to the 0.5 ppm factor. For instance, at a distance of 10 km (10,000.



The base receivers are stationary on control points. The rovers move from project point to project point across, stopping momentarily at each new point, usually briefly. The collected data provides vectors between themselves and the base receivers in real-time. RTK has become routine in development.



## The base station communication distance is relatively short

---



### FAQ - Distance from a base station

It is important to emphasize that RF propagation depends on quite a few things including antenna sensitivity, power output, network congestion, weather conditions, the ...

### [Understanding RTK Accuracy and Its Dependence ...](#)

For applications requiring extremely high precision in the 1cm range such as construction and high-precision agriculture, it is crucial to maintain a ...

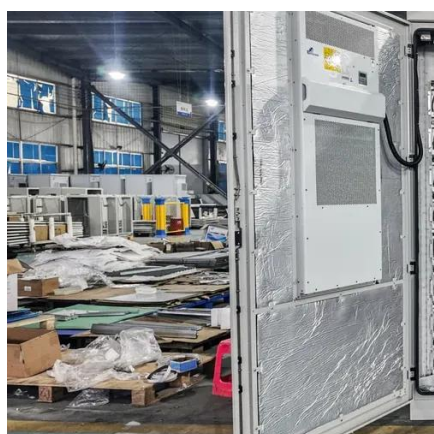


### [RTK and the Federal Communications Commission \(FCC\)](#)

As mentioned earlier, RTK is at its best when the distance between the base station and the rovers is 6-12 miles or less. However, the baseline's length may be further limited by the ...

### [RTK and the Federal Communications ...](#)

As mentioned earlier, RTK is at its best when the distance between the base station and the rovers is 6-12 miles or less. However, the baseline's ...



## ICNIRP , Base Stations

Over large distances, the signals must be relayed by a communication network comprising base stations and often supported by a wired network. The power of a base station varies (typically ...

## Base stations and networks

Base station antennas direct the radio signals away from the building or mast to obtain coverage in a certain area. The intensity of the radio waves is drastically reduced as the distance ...



## [EMT Chapter 5 Communication Flashcards Quizlet](#)

Study with Quizlet and memorize flashcards containing terms like base station, Mobile transmitters usually transmit effectively at lower power than base stations, Most mobile radios ...





## COMMUNICATIONS RANGE OF AVIATION BAND BASE ...

Increasing base station transmitter power will nearly always increase the communications range, but usually by less than anticipated. For aircraft at altitudes below 8000 feet agl, even a ...



## Distance from Base Station: A Deep Dive

Understanding the significance of distance from a base station is critical in wireless communication. This factor directly impacts signal strength, data rates, and overall network ...

## **FAQ - Distance from a base station**

It is important to emphasize that RF propagation depends on quite a few things including antenna sensitivity, power output, network ...

Our Lifepo4 batteries can be connected in parallels and in series for larger capacity and voltage.



## **Base Stations**

The present-day tele-space is incomplete without the base stations as these constitute an important part of the modern-day scheme of wireless communications. They are ...



## Base stations and networks

Base Stations Enable Mobile Communications  
 Antennas Are Placed in Various Locations  
 More Mobile Devices Means More Base Stations  
 Base Station Output Power Is Low  
 Exposure Limits Are Set by Independent Organizations  
 Exposure Levels Are Much Lower Than The Limits  
 Public Access Is Restricted Where Needed  
 No Adverse Health Effects According to The Who  
 Each base station can only serve a limited number of mobile devices at a time. As the number of mobile devices in a community grows, more base stations are needed. For that reason, more antennas are needed in such crowded locations as shopping malls where there are many mobile phone users. However, the shorter the distance between base station ante See more on ericsson Wikipedia



## Base station - Wikipedia

Overview  
 Wireless communications  
 Land surveying  
 Computer networking  
 See also

In radio communications, a base station is a wireless communications station installed at a fixed location and used to communicate as part of one of the following: o a push-to-talk two-way radio system, or; o a wireless telephone system such as cellular CDMA or GSM cell site.

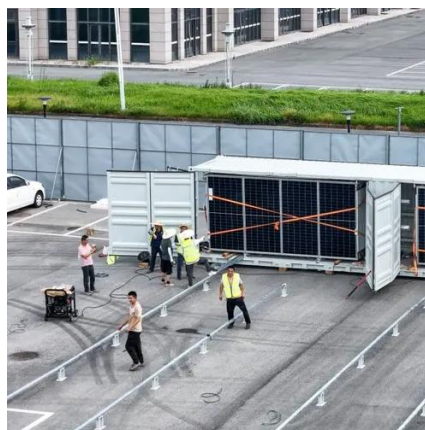


## Base station

A fixed station is a base station used in a system intended only to communicate with other base stations. A fixed station can also be radio link used to operate a distant base station by remote ...

## Base Stations

The present-day tele-space is incomplete without the base stations as these constitute an important part of the modern-day scheme ...



## **Understanding RTK Accuracy and Its Dependence on Distance from the Base**

For applications requiring extremely high precision in the 1cm range such as construction and high-precision agriculture, it is crucial to maintain a shorter distance from the base station, ...



## Contact Us

---

For inquiries, pricing, or partnerships:

<https://www.sccd-sk.eu>

Phone: +32 2 808 71 94

Email: [info@sccd-sk.eu](mailto:info@sccd-sk.eu)

Scan QR code for WhatsApp.

