



The current direction of solar panels





Overview

The underlying principle is universal: point your panels toward the equator. If you live in the Southern Hemisphere (e.g., Australia, South America), the principle is the same, but the direction is reversed: you should face your panels true north to maximize their exposure to the.

The underlying principle is universal: point your panels toward the equator. If you live in the Southern Hemisphere (e.g., Australia, South America), the principle is the same, but the direction is reversed: you should face your panels true north to maximize their exposure to the.

Orientation refers to the cardinal direction your solar panels face (north, south, east, or west), also known as the azimuth angle. Tilt angle describes the vertical angle of your panels relative to the ground, measured in degrees from horizontal. Both factors work together to determine how much.

The ideal tilt angle for your panels should be set to equal your geographic latitude. This combination of direction (orientation) and angle (tilt) is the single most important factor in determining your system's efficiency. Correctly orienting your panels can increase energy production by 20-30%.

Proper solar panel orientation and solar panel direction allow your solar system to generate the most electricity throughout the day. Factors like the direction your roof faces, the tilt of the panels, and even shading play a role in determining energy efficiency. To ensure optimal placement, it's.

Solar panel orientation refers to the two key positioning factors of your solar array, both of which are critical for capturing the maximum amount of solar radiation: Direction (Azimuth): This is the compass direction your panels face (e.g., south, east, west). Think of it as aiming your panels to.

The orientation of your solar panel—meaning the direction and tilt angle at which it is installed—determines how much sunlight it captures throughout the day. More sunlight means more power, which directly affects the efficiency and cost-effectiveness of your solar power system. 1 Understanding.



The current direction of solar panels

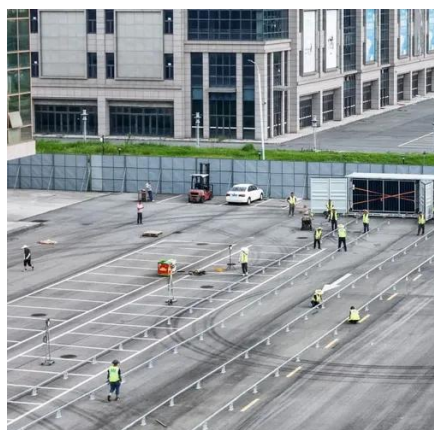


[Solar Panel Best Angle , Tilt & Orientation Guide ...](#)

Learn tilt formulas, seasonal adjustments, and tips to maximize energy efficiency in 2025. When it comes to installing solar panels, angle ...

[Solar Panel Orientation: Find the Best Angle and Direction](#)

Solar panel orientation refers to the compass direction that solar panels face when installed. This positioning determines which cardinal direction - north, south, east, or west - ...



Maximize Efficiency: Best Direction for Solar Panels , Sunrun

In most cases, the best direction for solar panels is facing south 1. Arrays that are appropriately oriented can improve energy output by up to 30% or more 2. However, factors ...

[Best Solar Panel Orientation for Maximum Output](#)

Whether you're installing a solar panel for home use or a commercial project, the direction and angle of your panels can significantly influence



performance. In this guide, we'll ...



[Solar Panel Best Angle , Tilt & Orientation Guide 2025](#)

Learn tilt formulas, seasonal adjustments, and tips to maximize energy efficiency in 2025. When it comes to installing solar panels, angle and orientation are just as important as ...

Unlock the Best Direction for Solar Panels to Face: Tips to Boost ...

When determining what is the best direction for solar panels to face, your location on the planet plays a pivotal role--specifically, whether you're in the Northern or Southern ...



[Solar Panel Direction & Orientation: 2025 Complete Guide](#)

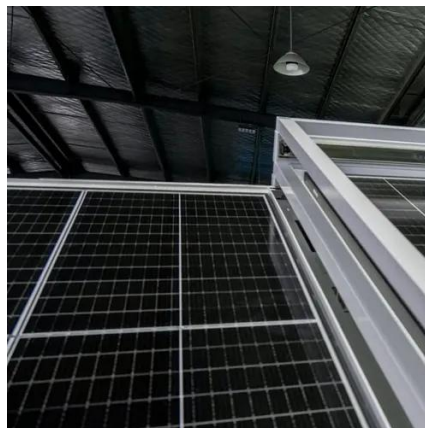
Discover the optimal direction and angle for solar panels to maximize energy output. Complete guide with calculations, tools, and location-specific recommendations for 2025.





The Ultimate Guide to Solar Panel Orientation and Efficiency

For the vast majority of homeowners in the Northern Hemisphere (including the United States and Europe), the optimal direction is true south. It's important to distinguish this from magnetic ...



[Solar Panel Direction & Orientation: 2025](#)

...

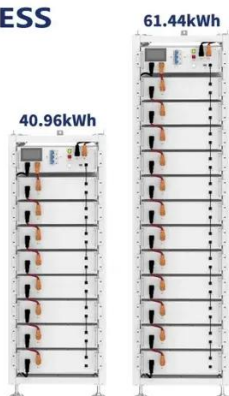
Discover the optimal direction and angle for solar panels to maximize energy output. Complete guide with calculations, tools, and ...

[Best Direction for Solar Panels to Maximize Savings -- ...](#)

According to the Department of Energy, the best direction for solar panels to face in the United States is south, as the sun spends most of its time traveling across the southern part of the ...



ESS



Best Roof Direction for Solar Panels - New England Metal Roof

Roof direction, or azimuth, is the compass orientation of the roof plane where panels are mounted. South-facing roofs in the Northern Hemisphere generally receive the ...



Solar Panel Orientation: Find the Best Angle and ...

Solar panel orientation refers to the compass direction that solar panels face when installed. This positioning determines which ...



Solar Panel Placement: Best Direction & Orientation Guide

Discover the optimal solar panel direction, placement & orientation to maximize energy efficiency. Boost savings with expert tips for an ideal setup!



Contact Us

For inquiries, pricing, or partnerships:

<https://www.sccd-sk.eu>

Phone: +32 2 808 71 94

Email: info@sccd-sk.eu

Scan QR code for WhatsApp.

