



# The electricity released by the 12v inverter





## Overview

---

A power inverter, inverter, or invertor is a device or circuitry that changes (DC) to (AC). The resulting AC frequency obtained depends on the particular device employed. Inverters do the opposite of which were originally large electromechanical devices converting AC to DC.

The inverter does not produce any power; the power is provided by the DC source. A power inverter can be entirely electronic or a combination of mechanical effects (such as a rotary apparatus) and electronic circuitry. Static inverters do not use moving parts in the.

The inverter does not produce any power; the power is provided by the DC source. A power inverter can be entirely electronic or a combination of mechanical effects (such as a rotary apparatus) and electronic circuitry. Static inverters do not use moving parts in the.

The electricity released by the 12v inverter Page 1/4 SolarInnovate Energy Solutions The electricity released by the 12v inverter Powered by SolarInnovate Energy Solutions Page 2/4 Overview What is a 12V inverter?

A 12V inverter is an electronic device that converts 12V direct current (DC) power.

A 12-volt DC power inverter is an essential device for converting 12V direct current (DC) from a battery into 120V alternating current (AC), allowing you to power standard household appliances on the go. Whether you need to charge a laptop in your car, run a small refrigerator while camping, or.

A power inverter, inverter, or invertor is a power electronic device or circuitry that changes direct current (DC) to alternating current (AC). [1] The resulting AC frequency obtained depends on the particular device employed. Inverters do the opposite of rectifiers which were originally large.

A 12V inverter is a device that converts 12V DC power from batteries or solar panels into 120V/230V AC electricity, enabling the use of household appliances in off-grid or mobile setups. Commonly used in cars, RVs, boats, and solar systems, inverters come in modified sine wave (for basic devices).

A 12V inverter is a device that transforms 12V battery power from direct current



(DC) to alternating current (AC). This AC power is used to operate various electrical devices. 12V Inverters are commonly used in small cars, boats, and in homes and small businesses appliances as the power required.

Ever wondered what's inside a 12V DC to 220V AC power inverter?

In this detailed teardown, we open up the aluminum casing and explore the internal design and components that make this voltage converter work.more Ever wondered what's inside a 12V DC to 220V AC power inverter?

In this detailed.



## The electricity released by the 12v inverter

---



### [5 Things You Need to Know About 12V Inverters , L& T-SuFin](#)

When selecting a 12V inverter, understand the wattage of the appliances you plan to power. The wattage rating of the inverter should be higher than the wattage of the appliance or ...

### [What Is A 12V Inverter And Where Is It Used?](#)

A 12V inverter is a device that converts 12V DC power from batteries or solar panels into 120V/230V AC electricity, enabling the use of household appliances in off-grid or mobile setups.



### [5 Things You Need to Know About 12V Inverters , L& T-SuFin](#)

Ever wondered what's inside a 12V DC to 220V AC power inverter? In this detailed teardown, we open up the aluminum casing and explore the internal design and components that make this voltage

## Power inverter

A power inverter, inverter, or invertor is a power electronic device or circuitry that changes direct current (DC) to alternating current (AC). [1] The resulting AC frequency obtained depends on ...



1075KWHH ESS



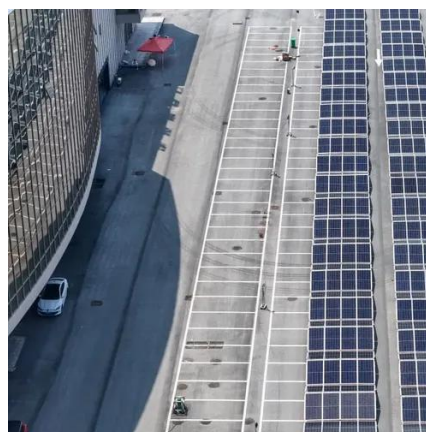
## Power inverter

Overview  
Input and output  
Batteries  
Applications  
Circuit description  
Size  
History  
See also

A power inverter, inverter, or invertor is a power electronic device or circuitry that changes direct current (DC) to alternating current (AC). The resulting AC frequency obtained depends on the particular device employed. Inverters do the opposite of rectifiers which were originally large electromechanical devices converting AC to DC.

### [How DC/AC Power Inverters Work](#), [HowStuffWorks](#)

An inverter increases the DC voltage, and then changes it to alternating current before sending it out to power a device. These devices ...



### How to Build a 12v Inverter Circuit Diagram for Powering Your ...

Find the circuit diagram for a 12v inverter and learn how it can convert direct current (DC) to alternating current (AC) for various applications. Understand the components and connections ...



## The electricity released by the 12v inverter

A 12V inverter is an electronic device that converts 12V direct current (DC) power from a battery into 120V alternating current (AC) power. This conversion is necessary when you want to ...

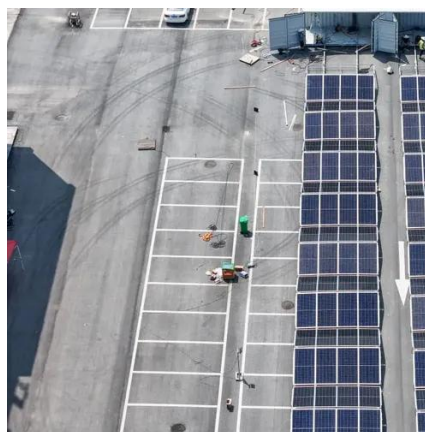


## How Does a 12V to 120V Inverter Work?

Inverters achieve the conversion of DC to AC through the following steps: 1. High-frequency switching circuit. The 12V inverter first ...

## Inside a 12V to 220V Power Inverter , Full Teardown

Ever wondered what's inside a 12V DC to 220V AC power inverter? In this detailed teardown, we open up the aluminum casing and explore the internal design and components that make this ...





## [What does a power inverter do, and what can I use one for?](#)

The inverter draws its power from a 12 Volt battery (preferably deep-cycle), or several batteries wired in parallel. The battery will need to be recharged as the power is drawn out of it by the ...

## **12 Volt DC Power Inverter: In-Depth Learning and Buying Guide**

A 12V DC power inverter is a device that converts low-voltage direct current (DC) power from a 12V battery (such as a car battery or deep-cycle battery) into 120V alternating ...



## [How Does a 12V to 120V Inverter Work?](#)

Inverters achieve the conversion of DC to AC through the following steps: 1. High-frequency switching circuit. The 12V inverter first breaks the DC into short pulses through a ...



## [How DC/AC Power Inverters Work., HowStuffWorks](#)

An inverter increases the DC voltage, and then changes it to alternating current before sending it out to power a device. These devices were initially designed to do the ...





## [12 Volt DC Power Inverter: In-Depth Learning and ...](#)

A 12V DC power inverter is a device that converts low-voltage direct current (DC) power from a 12V battery (such as a car battery or ...





## Contact Us

---

For inquiries, pricing, or partnerships:

<https://www.sccd-sk.eu>

Phone: +32 2 808 71 94

Email: [info@sccd-sk.eu](mailto:info@sccd-sk.eu)

Scan QR code for WhatsApp.

