



The new energy battery cabinet cannot be charged





The new energy battery cabinet cannot be charged

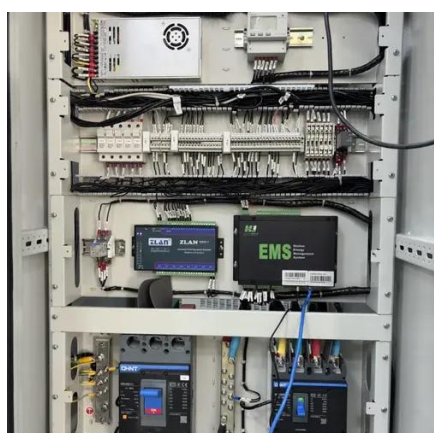
Faq's

Once the low-temperature protection is removed, the battery can be charged. Insufficient AC power or low voltage on the busbar prevents the battery from charging. To resolve this, site ...



eastcoastpower

Properly installing a lithium battery energy storage cabinet maximizes its performance. Following the step-by-step process outlined in this guide and adhering



[What to do if the energy storage cabinet cannot be charged](#)

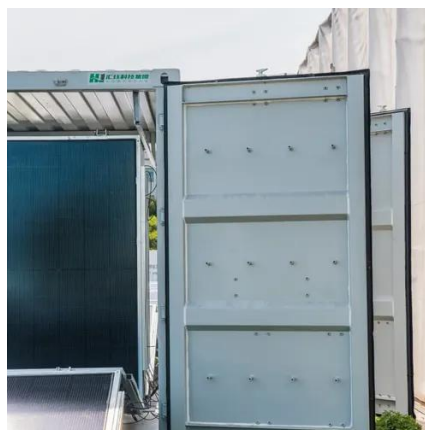
No use for a long time: The energy storage cabinet has not been activated for more than 3 consecutive months (The cabinet must be charged to 50% SOC before being suspended from

[New energy battery cabinet cannot be charged](#)

The battery pack has voltage but cannot be charged and discharged. This kind of battery failure is also caused by pressure difference under



the premise of excluding damage to the protection ...



New energy battery cabinet cannot be charged

A lithium-ion cabinet, also known as a battery charging cabinet or battery safety cabinet, is a special fireproof storage unit designed to charge and safely store multiple batteries



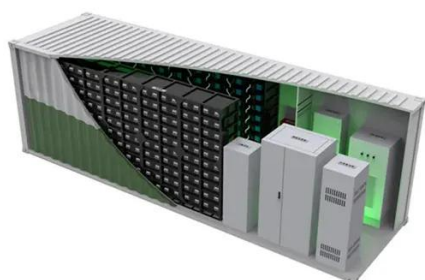
The new energy is out of power and cannot be charged. , BitAuto

It is recommended that you first check the temperature of the charging equipment and battery, and then try replacing the charger or charging at a different charging station. If the ...



Can the new energy battery cabinet be charged separately

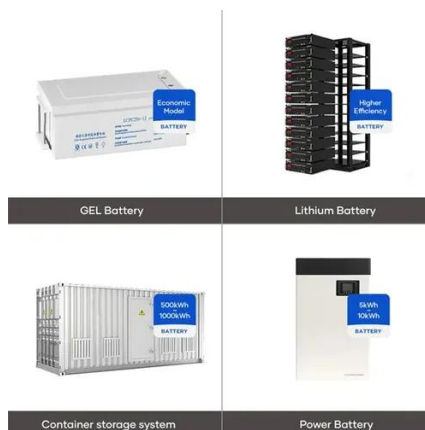
Abstract With the continuous development of new energy generation technology and the increasingly complex power grid environment, the traditional black start scheme cannot meet ...





Why Your Photovoltaic Panel Battery Can't Reach Full Charge ...

The photovoltaic panel battery cannot be fully charged issue plagues 23% of residential solar systems in their first three years, according to 2023 data from the National Renewable Energy ...



What to do if the energy storage cabinet cannot be charged

Depending on the purpose of the battery energy storage system, include a description of how the proposed battery energy storage system is expected to impact/change the customer energy ...

How To Troubleshoot A Battery In A PWRcell System?

PWRcell battery errors come in different forms and meanings. They can be as simple as one-time errors that resolve with a single reset, installation errors, or an overall system error that can recur.





Contact Us

For inquiries, pricing, or partnerships:

<https://www.sccd-sk.eu>

Phone: +32 2 808 71 94

Email: info@sccd-sk.eu

Scan QR code for WhatsApp.

