



The role of solar inverter combiner box





Overview

The combiner box's role in a solar system is to aggregate the power output of multiple solar panels, simplifying wiring complexity, maximizing potential energy output, and significantly enhancing the efficiency and safety of photovoltaic equipment.

The combiner box's role in a solar system is to aggregate the power output of multiple solar panels, simplifying wiring complexity, maximizing potential energy output, and significantly enhancing the efficiency and safety of photovoltaic equipment.

A combiner box is an electrical device used in solar installations to combine the output current from multiple solar panels into a single circuit, improving system efficiency and offering safety features like overcurrent protection. It is equipped with fuses or circuit breakers to protect each.

A combiner box is a key DC distribution device used between PV strings and the inverter. Each string consists of solar modules wired in series, and the combiner box gathers multiple strings into a single output while ensuring safety and system efficiency. Current Collection: Consolidates DC output.

Bottom Line Up Front: A solar combiner box consolidates multiple solar panel strings into a single output before sending power to the inverter. It simplifies wiring, enhances safety with overcurrent protection, and reduces installation costs—but it's typically only needed for systems with four or.

Its primary function is to combine the output currents of multiple solar panel strings (PV strings) into a single output, which is then sent to the inverter for DC to AC conversion. In a typical solar power system, numerous solar panels are connected in series to form multiple strings. Each string.

A solar combiner box connects multiple solar panel strings into a single output for the inverter. It helps organize wiring, improve safety, and boost efficiency. By reducing messy cables, it makes installation easier and lowers the risk of electrical issues. It also protects against power surges.

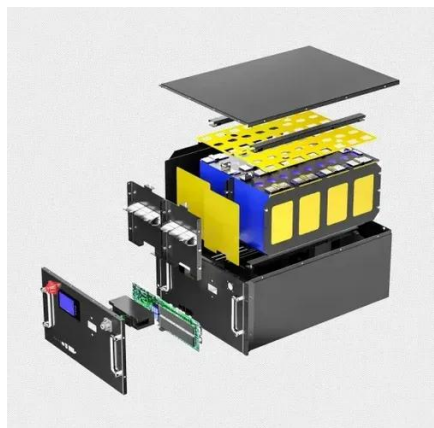
The solar combiner box serves as the central collection point, acting as a



structured hub for the high-voltage DC power generated by the photovoltaic modules. Solar panels are grouped into electrical circuits called “strings,” where multiple panels are wired together in a series connection to.



The role of solar inverter combiner box



[What Does a Solar Combiner Box Do? Complete PV Guide 2025](#)

Solar combiner boxes consolidate incoming power into one main feed that distributes to a solar inverter. This saves labor and material costs through wire reductions.

[Solar combiner box: definition, core functions and ...](#)

In the solar power sector, the combiner box plays a crucial role. It not only consolidates the current output from multiple solar panels ...



[What is a Combiner Box as Used in PV System](#)

In short, a solar combiner box is a centralized unit designed to collect, protect, and route solar-generated DC electricity efficiently and safely, acting as a bridge between solar ...

[What Is a Combiner Box as Used in PV System](#)

Among these, the combiner box plays a vital role in ensuring the safety, organization, and performance of solar installations. This article will



explore what a combiner ...



[A Comprehensive Guide to Combiner Boxes in Photovoltaic ...](#)

In a photovoltaic system, a combiner box acts as a central hub that consolidates and manages the direct current (DC) output of multiple solar panels. Its main purpose is to simplify the wiring ...

Solar combiner box: definition, core functions and working principle

In the solar power sector, the combiner box plays a crucial role. It not only consolidates the current output from multiple solar panels but also provides protection and ...



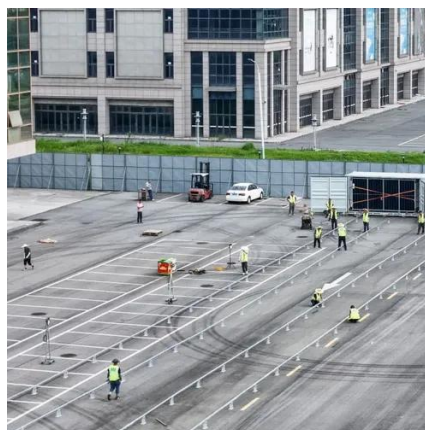
Solar Combiner Box: What Is It

A solar combiner box connects multiple solar panel strings into a single output for the inverter. It helps organize wiring, improve safety, and boost efficiency.



What Is a Solar Combiner Box and How Does It Work?

The physical location of the combiner box within the entire solar power system is determined by practical and electrical considerations. It is always situated electrically between the solar ...



Combiner Boxes, Isolators, Disconnects

Combiner boxes, isolator switches, and disconnects are the traffic controllers of your solar array. They manage the flow of power, provide vital protection, and allow for safe ...

Solar Combiner Box: What Is It

Introduction
What Is A Solar Combiner Box
What Is The Function of A Solar Combiner Box?
Key Components of A Solar Combiner Box
How Does A Solar Combiner Box Work?
When Do You Need A Solar Combiner Box?
Factors to Consider When Choosing A Combiner Box
Benefits of Using A Solar Combiner Box
Installation and Maintenance Tips
Conclusion
A solar combiner box is more than just a box. It plays a crucial role in your solar power system. It combines the power from multiple panels, protects against electrical faults, and simplifies your setup. This makes your system safer, easier to maintain, and more efficient. If you're considering a solar installation, consider adding a combiner box .See more on eabel
Reviews: 1
Published: Mar 6, 2025



Videos of The Role Of Solar Inverter Combiner Box

Watch video
8:31 Our DIY Solar Combiner Box! How We Wired It! Country Living Experience: A Homesteading Journey
27K views
Oct 27,



2024Watch video16:29How to use a combiner box with the EG4 12000xp to maximize your solar input Gavin Stone DIY Homestead17.7K views11 months agoWatch video5:36What is a PV Combiner Box? DIY Solar Power with Will Prowse298.6K viewsJun 12, 2021Watch full videoShort videos

the role of solar inverter combiner box

00:20Correct DC Combiner Box Wiring for Solar Systems 00:11Wiring Solar DC MCB & SPD to Inverter , Combiner Box Setup 00:49SUNC Energy Storage System: Installing PV Combiner Box & Solar Inverter Day 8#solarinstallation 00:45How to Wire a Solar Photovoltaic DC Combiner Box , ETEK Electric Guide 00:13Suggested accountsTikTok00:47The DC combiner box with 4 inputs and 2 outputs See allWatch full videoSee moreEngineer Fix

What Is a Solar Combiner Box and How Does It Work?

The physical location of the combiner box within the entire solar power system is determined by practical and electrical considerations. It is always situated electrically between the solar ...



[What Does a Solar Combiner Box Do? Complete ...](#)

Solar combiner boxes consolidate incoming power into one main feed that distributes to a solar inverter. This saves labor and ...

[Understanding PV Combiner Boxes: Design, ...](#)

A combiner box is a key DC distribution device used between PV strings and the inverter. Each string consists of solar modules wired in ...



[The Ultimate Guide to Residential Solar Combiner Box](#)

Often described as the "central nervous system" of a solar installation, the combiner box consolidates DC output from multiple panel strings while serving as a critical hub for ...

[Understanding PV Combiner Boxes: Design, Function, ...](#)

A combiner box is a key DC distribution device used between PV strings and the inverter. Each string consists of solar modules wired in series, and the combiner box gathers ...





Contact Us

For inquiries, pricing, or partnerships:

<https://www.sccd-sk.eu>

Phone: +32 2 808 71 94

Email: info@sccd-sk.eu

Scan QR code for WhatsApp.

