



The telecommunications company built a base station on a small building





Overview

The AT&T Long Lines Building, designed by John Carl Warnecke at 33 Thomas Street in Manhattan, under construction ca. 1974. [© Thorney Lieberman].

The AT&T Long Lines Building, designed by John Carl Warnecke at 33 Thomas Street in Manhattan, under construction ca. 1974. [© Thorney Lieberman].

A cell site, cell phone tower, cell base tower, or cellular base station is a cellular-enabled mobile device site where antennas and electronic communications equipment are placed (typically on a radio mast, tower, or other raised structure) to create a cell, or adjacent cells, in a cellular.

Telecom shelters play a vital role in housing critical communications equipment away from the main switching center, ensuring uninterrupted and efficient telecommunications operations. We specialize in providing high-quality remanufactured equipment shelters designed to protect your essential.

The present-day tele-space is incomplete without the base stations as these constitute an important part of the modern-day scheme of wireless communications. They are referred to as cell towers or cellular antennas. These types of objects are an inevitability since they serve the purpose of.

Cell towers consist of various components such as antennas, base transceiver stations, masts, and ground-based equipment, enabling efficient cellular communication by managing signals from mobile devices. The distinction between 4G and 5G towers lies in improved speed, capacity, and latency.

A typical communication base station combines a cabinet and a pole. The cabinet houses critical components like main base station equipment, transmission equipment, power supply systems, and battery banks. Meanwhile, the pole serves as a mounting point for antennas, Remote Radio Units (RRUs), and.

We focused on building smarter energy solutions, making efficiency easier to achieve, and delivering real value in the field. Read Galooli's ESG Report 2025 and learn how our work across the Environmental, Social, and Governance pillars creates meaningful impact. Every day, billions of people use.



The telecommunications company built a base station on a small building



[How Cell Towers Work to Keep Your Networks ...](#)

Cell towers, also commonly referred to as cell sites or base transceiver stations, are crucial components of modern ...

Cell site

The coverage area in which service is provided is divided into a mosaic of small geographical areas called "cells", each served by a separate low power multichannel transceiver and ...



Base Stations

A Pico cell base station is a small wireless tower that provides improved phone and Internet services to local areas such as homes or small offices; More specifically for specific ...

Apocalypse-Proof

A windowless telecommunications hub, 33 Thomas Street in New York City embodies an architecture of surveillance and paranoia. That has made it ...



Telecom Shelters

Telecom shelter construction involves more than just building a structure from the ground up; it integrates engineering expertise, meticulous planning, ...



[How Cell Towers Work to Keep Your Networks Connected - NI](#)

Cell towers, also commonly referred to as cell sites or base transceiver stations, are crucial components of modern telecommunication systems. The physical structure holds ...



4 types of Base stations

A micro base station is a relatively small-scale base station with a smaller coverage area than a macro base station. It is usually set ...



[Complete Guide to 5G Base Station Construction](#)

To understand the intricate world of mobile networks, it's crucial to grasp the role of base stations within the larger ...

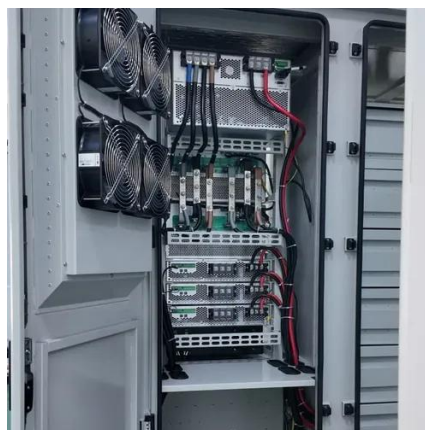


[Telecommunication Shelters & Enclosures](#)

Module X Solutions designs, engineers and manufactures modular and build on site precast or lightweight steel telecommunication equipment shelters ...

4 types of Base stations

A micro base station is a relatively small-scale base station with a smaller coverage area than a macro base station. It is usually set up in densely populated areas such as ...



Apocalypse-Proof

A windowless telecommunications hub, 33 Thomas Street in New York City embodies an architecture of surveillance and paranoia. That has made it an ideal set for conspiracy thrillers. ...



[Breaking Down Base Stations - A Guide to Cellular Sites](#)

Wondering what telecom sites really look like? Find everything you need to know about telecom sites, towers, and their components.

1mwh (500kw/1mwh)

AIR COOLING
ENERGY STORAGE CONTAINER



Complete Guide to 5G Base Station Construction , Key Steps, ...

To understand the intricate world of mobile networks, it's crucial to grasp the role of base stations within the larger telecommunications network. These stations act as "business ...

Understanding Macro Towers: The Backbone of Wireless Telecommunications

Macro towers play an indispensable role in the infrastructure of wireless communications, enabling the vast reach and mobility that modern telecommunication users expect.



Telecom Shelters

Telecom shelter construction involves more than just building a structure from the ground up; it integrates engineering expertise, meticulous planning, and skilled installation to create a ...



Base Stations

A Pico cell base station is a small wireless tower that provides improved phone and Internet services to local areas such as homes or ...



Telecommunication Shelters & Enclosures

Module X Solutions designs, engineers and manufactures modular and build on site precast or lightweight steel telecommunication equipment shelters to industry and client specific ...

Breaking Down Base Stations - A Guide to

...

Wondering what telecom sites really look like? Find everything you need to know about telecom sites, towers, and their ...





Contact Us

For inquiries, pricing, or partnerships:

<https://www.sccd-sk.eu>

Phone: +32 2 808 71 94

Email: info@sccd-sk.eu

Scan QR code for WhatsApp.

