



Three-phase battery cabinet battery installation





Three-phase battery cabinet battery installation



[Tripp Lite 3-Phase Battery Cabinet Extended-Run User Manual](#)

Owner's manual, Extended-run 3-phase battery cabinet, 1 - introduction o Read online or download PDF o Tripp Lite 3-Phase Battery Cabinet Extended-Run User Manual

[Eaton Samsung Gen 3 Battery Cabinet Installation and ...](#)

This manual describes how to install the Eaton Samsung Gen 3 battery cabinet and is divided into chapters. Read and understand the procedures described to ensure trouble-free installation ...



Classic Battery Cabinet for IEC For Galaxy VS/VL and Easy UPS ...

Installation manual containing information on how to install and connect the product

[Tripp Lite Extended-Run 3-Phase Battery Cabinet User Manual](#)

All sections of this manual contain instructions and warnings that must be followed during the installation and operation of the battery cabinet



described in this manual.



[/15/20KVA UPS Battery Cabinet Installation and Operation ...](#)

Installation or replacement of batteries must be located in a SERVICE ACCESS AREA: The service manual shall include the following instructions for battery replacement and disposal:

[Mitsubishi Electric Power Products, Inc. BC43 Battery ...](#)

Battery cabinets that are not supplied with an incorporated DC output disconnect device must have an appropriate disconnect device provided external to the cabinet.



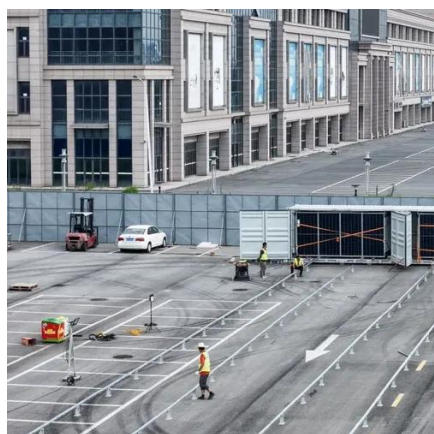
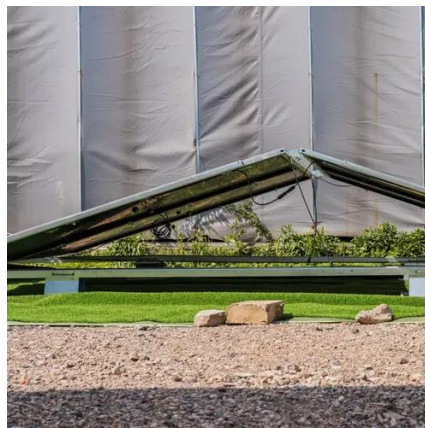
Classic Battery Cabinet for IEC For Galaxy VS/VL and Easy UPS 3-Phase

Installation manual containing information on how to install and connect the product



[E3MAC-3P-STACKED-CONFIGURATION-ISOLITE-Contract...](#)

Ensure proper spacing between batteries so that Battery-Battery Buss Bar Jumpers can be installed properly. Connect Jumper Battery Cables from lower right battery (+) to upper left ...



Tripp Lite 3-Phase Battery Cabinet Extended-Run Owner's Manual

3 - Battery Cabinet Installation 3-4 Internal Wiring (Typical) o Battery cabinets use multiple 6 VDC or 12 VDC batteries connected in series to provide nominal DC voltages ranging from 240 ...

[Eaton 93E external battery cabinet installation manual](#)

This manual contains important instructions that should be followed during installation and maintenance of the UPS and batteries. Read all instructions before operating the equipment ...



Contractors Guide

Start with the positive terminal of the right battery on the bottom shelf and connect it to the negative terminal of the left battery on the shelf directly above.

Warranty
10 years

LiFePO₄

Intelligent BMS

Wide Temp:
-20°C to 55°C





Contact Us

For inquiries, pricing, or partnerships:

<https://www.sccd-sk.eu>

Phone: +32 2 808 71 94

Email: info@sccd-sk.eu

Scan QR code for WhatsApp.

